



2010 & Up Mazdaspeed 3 Hood Scoop Vented Insert Installation Instructions

Tooling:

- ✓ Ratchet wrench
- ✓ 10mm Socket
- ✓ Small pick
- ✓ Flat head screwdriver

Parts List:

- ✓ Hood scoop insert

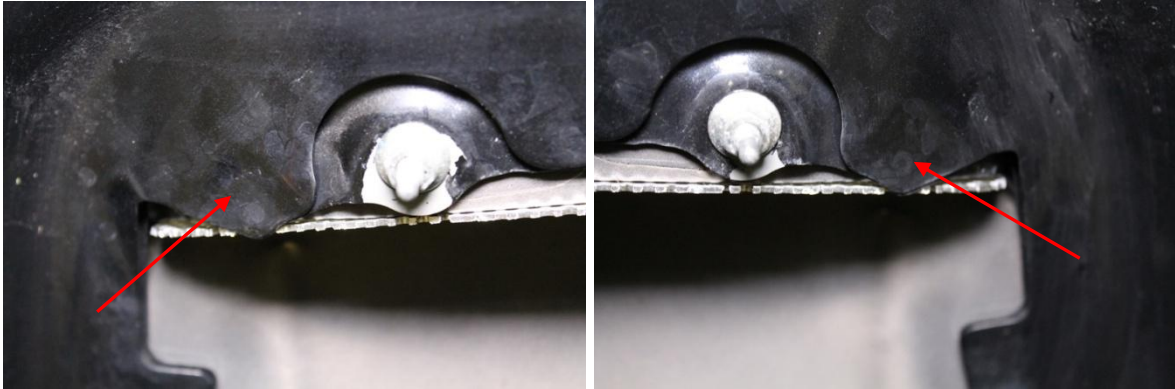
**Please be sure to read and understand the instructions thoroughly before beginning.

We'll start with instructions for installation of your new JBR Hood Scoop Vented Insert for those that will be retaining the OEM factory ducting. If you have a front mounted intercooler and the factory ducting has already been removed or you do not plan to retain the OEM factory top mount ducting, skip ahead to page 5.

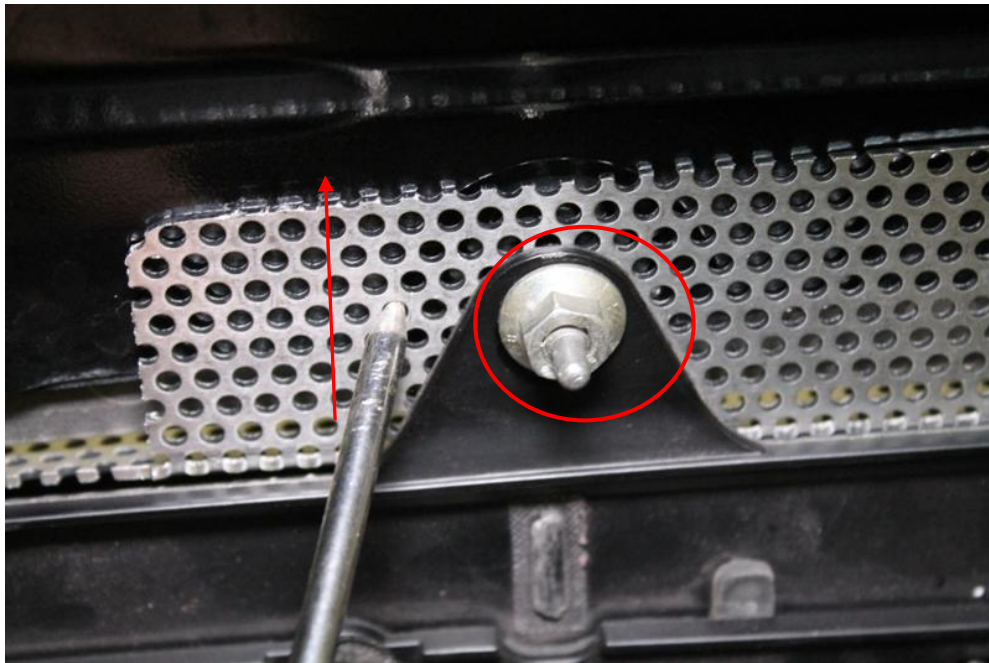
1. Open the hood and, using a flat head screwdriver, remove the **three plastic push pins** in the center of the factory top mount ducting. Then, using a 10mm socket, **remove ONLY the nuts circled below**. This will allow the ducting to come away from the hood and hang in place.



- Put the hood scoop insert in place over the two center nuts. Make sure the bottom portion of the insert is above the two tabs in hood on both sides.

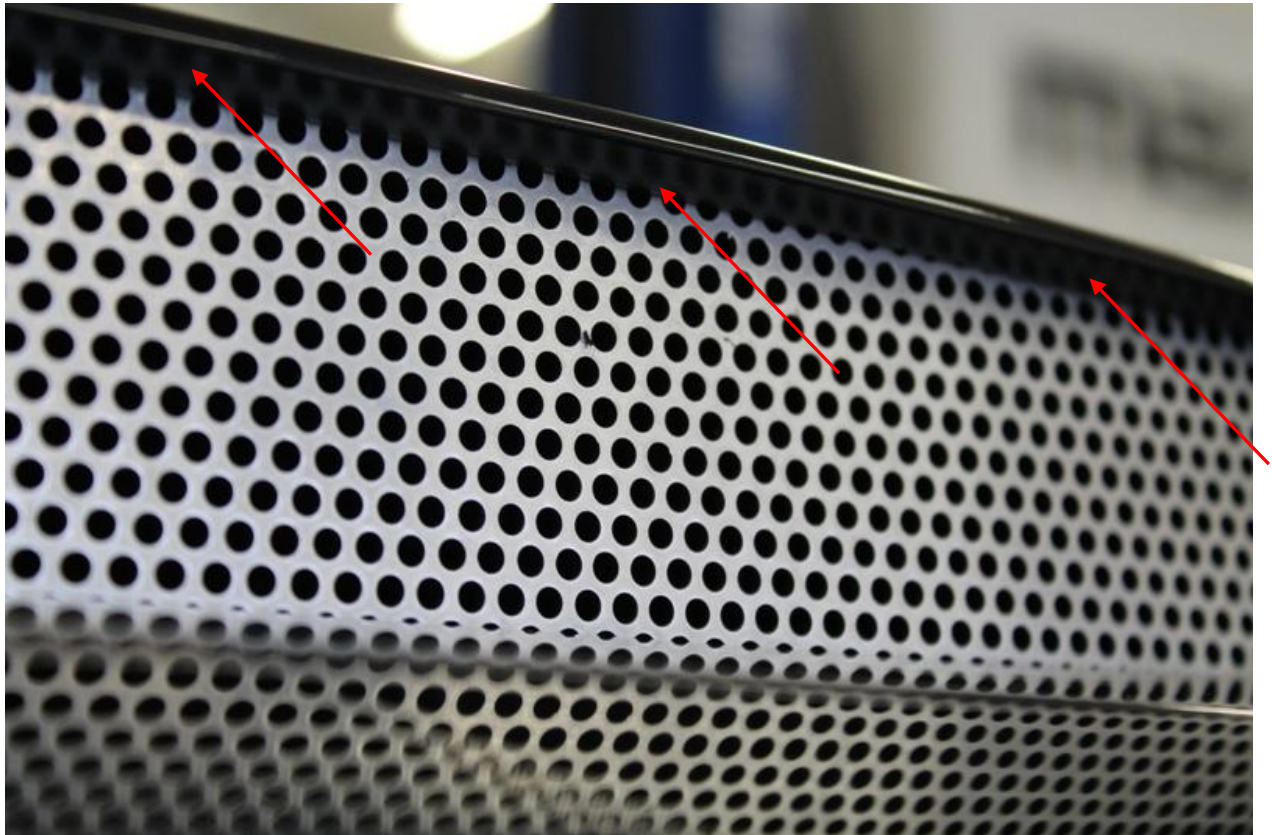


- Once the insert is properly in place above the tabs, raise up the factory ducting and loosely install all nuts removed in step 1.
- With the factory ducting in place, put a pick through one of the holes near a nut that secures it. Use the pick to push the insert towards the front of the hood. While holding the insert forward, tighten the nut that secures the scoop insert. Do this for both nuts.



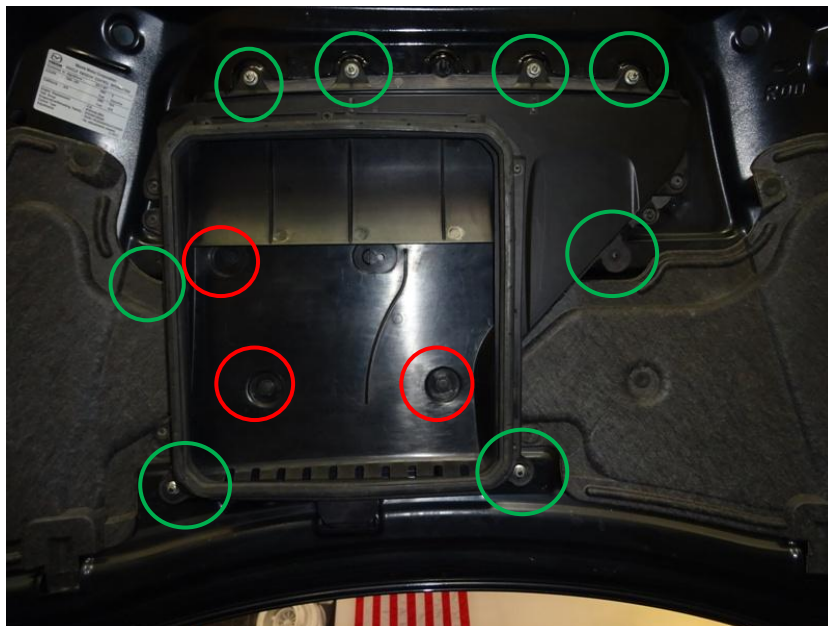
- Next, tighten all remaining nuts left loose in step 3 and install the three plastic push pins removed in step 1.

6. Close the hood and ensure that the insert is up and behind the lip in the top of the hood scoop. If it's not, use gentle pressure to push it back until it's behind the lip. Push only in the center and just left or just right of center. DO NOT push far right or far left.

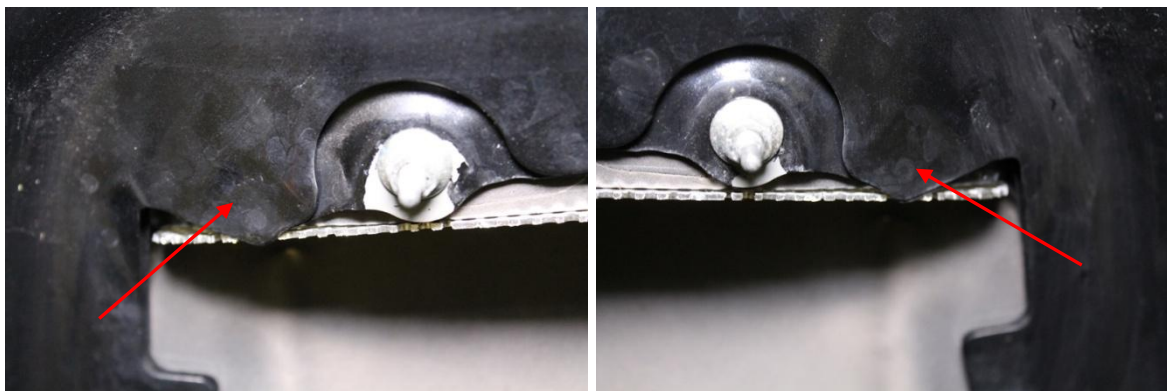


If you have a front mounted intercooler and the factory ducting has already been removed or you do not plan to retain the OEM factory top mount ducting, perform the following steps.

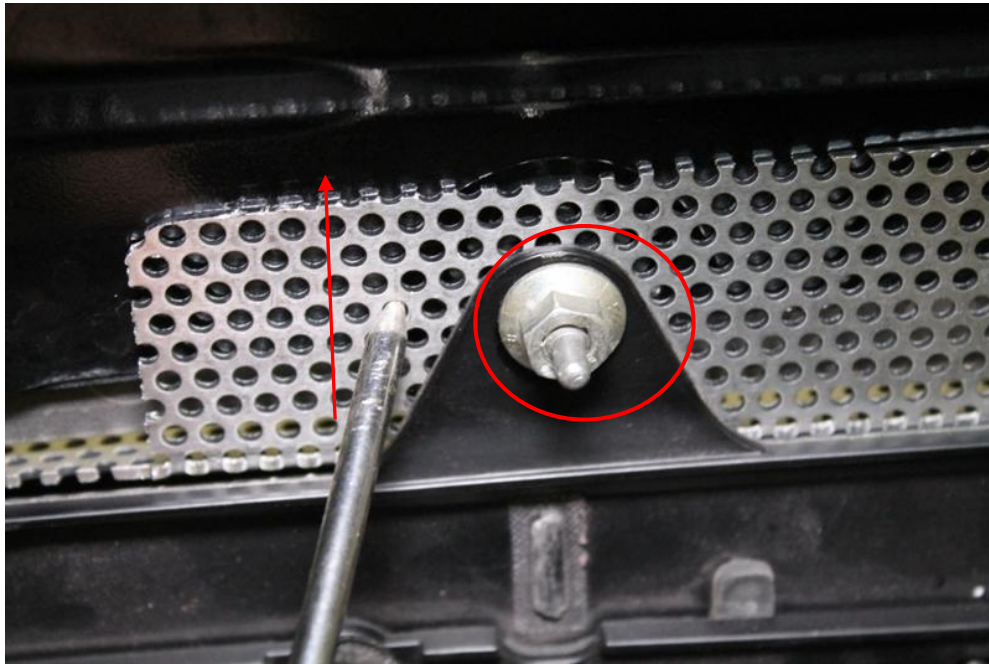
1. Open the hood and, using a flat head screwdriver, remove the **three plastic push pins** in the center of the factory top mount ducting. Then, using a 10mm socket, **remove ALL of the nuts circled below** and remove the ducting from the car.
 - Optionally you may choose to remove the hood insulation at this time



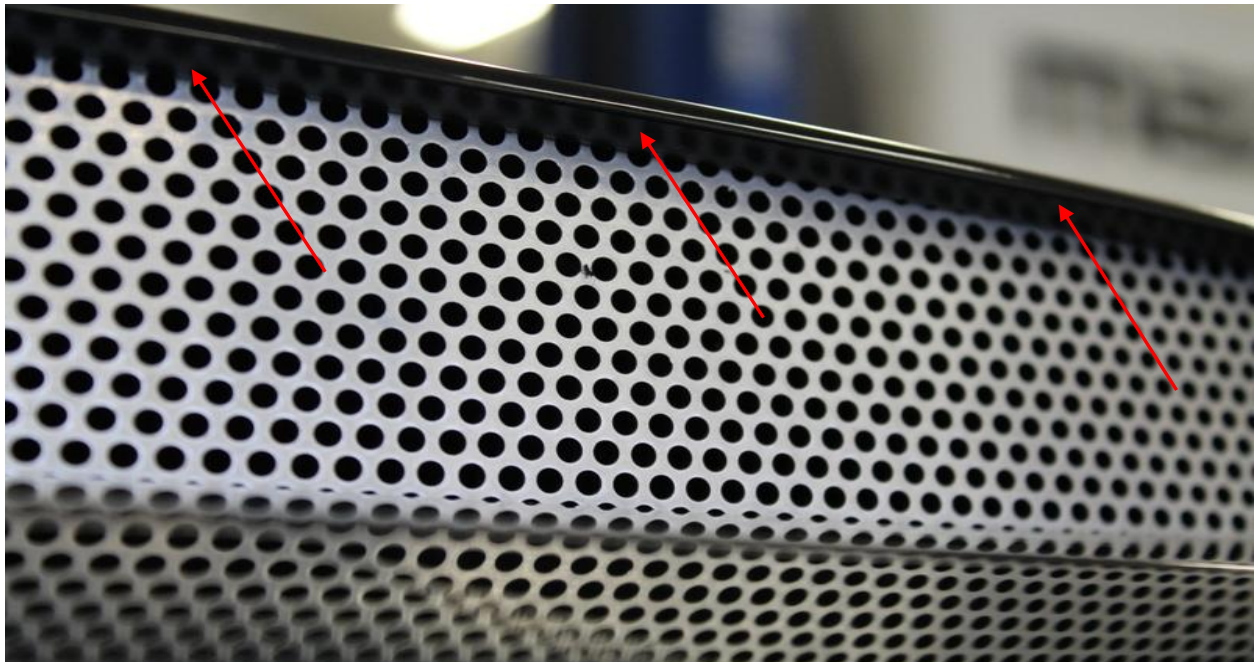
2. Put the hood scoop insert in place over the two center nuts. Make sure the bottom portion of the insert is above the two tabs in hood on both sides.



3. Once the insert is properly in place above the tabs, put a pick through one of the holes near a nut that secures it and use the pick to push the insert towards the front of the hood. While holding the insert forward, tighten the nut that secures the scoop insert. Do this for both nuts then reinstall the other two nuts that secure the scoop removed in step 1.



4. Close the hood and ensure that the insert is up behind the lip in the top of the hood scoop. If it's not, use gentle pressure to push it back until it's behind the lip. Push only in the center and just left or just right of center. DO NOT push far right or far left.



**Congratulations!! This completes the installation of your new
JBR Hood Scoop Vented Insert!!**