



James Barone Racing Aftermarket Parts and Accessories

2012+ Focus N/A 3-Way Rear Sway Bar Installation Instructions

Tools Required:

13mm 6 point deep socket
Socket wrench
8mm end wrench
15mm end wrench
18mm end wrench
5mm allen Wrench

- ❖ Begin by parking on a smooth level surface with the emergency brake engaged. Jack up both sides of the rear of the vehicle and position jack stands underneath both sides. Backing the rear of the vehicle up on to a pair of ramps is also a good option if you have them.



Refer to you vehicles owner's manual for proper jack placement and supporting procedures. **Never get under a vehicle without the proper support in place.**

1. Using a 13mm socket remove all 4 bolts securing the factory sway bar bushings and brackets to the frame.



- Using both a 8mm and 18mm wrench remove 2 nuts from both end links. If using jack stands proceed to step 4. If using ramps remove the sway bar from the vehicle and proceed to step 5.



- Using a 5mm allen wrench and 15mm end wrench remove the top nut off only one of the end links. Remove the end link and the sway bar from the vehicle.



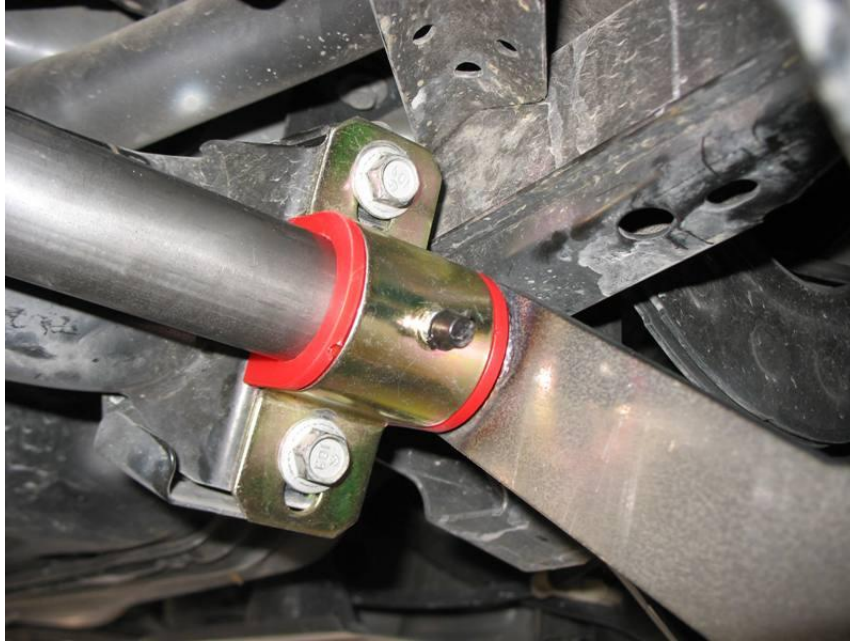
4. Apply 1 complete packet of grease in to each of the new included sway bar bushings and slip the bushings over the sway bar. Place the brackets on to the bushings. **The grease provided is for initial installation and bushing break in. Additional grease will be required. The use of synthetic ONLY grease is recommended.**



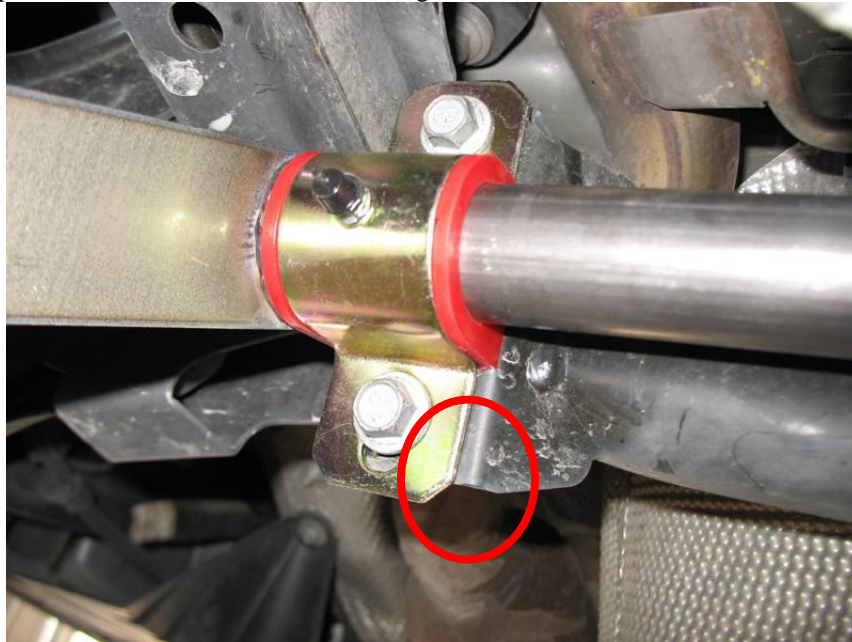
5. Install your new JBR 3-way Rear Sway Bar in to the vehicle first by placing both of the end links in to the desired hole in the end of each sway bar arm and loosely install the nuts removed in step3. The recommend setting to start is the center hole. The hole closest to the front of the vehicle is the stiffest setting. The hole closest to the rear of the vehicle is the softest setting. If you removed the end link completely in step 4, reinstall it in to the control arm and tighten the upper nut with a 5mm allen wrench and a 15mm end wrench.



- Put 1 drop of Loctite on each of the 4 sway bar bushing bracket bolts and loosely install each of them through the new bushing brackets securing the sway bar to the vehicles sub-frame



- Once all 4 bolts have been installed raise each of the bushing brackets so they hang just below the perch on the sub-frame as shown and tighten.



8. Tighten both of the nuts on each of the end links.



Congratulations!!
Now it's time to go out and Enjoy your new JBR Rear Sway Bar



Recheck all nuts and bolts after the first few hundred miles of operation. If clunking occurs it's most likely the end links and they will to be re-tightened. This is a good time to add additional synthetic grease to the bushings using a grease gun.

SHIPPING

All orders are carefully inspected and packaged prior to shipment. The recipient must inspect all shipments for damage and report any damage to the carrier and JAMES BARONE RACING immediately. JAMES BARONE RACING is not responsible for damage that occurs during shipping.

RETURNS:

All sales are final. JAMES BARONE RACING will only except returns in the event of a manufacturer's defect. Defective items will be exchanged for the identical item or repaired at our discretion. Return shipping costs are the responsibility of the purchaser. An RMA # (Return to Manufacturer Authorization Number) Must accompany all returns. In rare cases where a return is accepted a 15% restocking fee will be deducted from the refund or credit. Shipping charges are non- refundable. No returns or exchanges will be accepted after 30 days.

DISCLAIMERS:

Failure to carefully follow the installation instructions for your JAMES BARONE RACING product could result in significant property damage, personal injury, injury to others or even death. Please take the time to read and thoroughly understand the instructions prior to installation. The instructions are as accurate as possible and may vary slightly from model year to model year. Professional installation is recommended.

Neither JAMES BARONE RACING nor any of its employees, officers, directors, or shareholders will accept responsibility for improper use or installation of our products. JAMES BARONE RACING is not responsible for the misuse, incorrect installation, or failure of any product we sell. Under no circumstances, including but not limited to negligence, will JAMES BARONE RACING be liable for special or consequential damages that result from the use or inability to use our products. JAMES BARONE RACING does not assume responsibility for any damage to the user, driver, passenger or vehicle resulting from the operation of a JAMES BARONE RACING product. PLEASE DRIVE RESPONSIBLY.

WARRANTY:

All JAMES BARONE RACING products carry a lifetime warranty to the original purchaser. Warranty is non-transferable. Warranty does not cover damage or failure caused by abuse, misuse, faulty installation or repairs not conducted by JAMES BARONE RACING. JAMES BARONE RACING is not liable for consequential damages arising from the use of our products or any indirect damages resulting in the loss of property, revenue or costs for towing, removal, installation, or re-installation. To receive warranty service you must contact JAMES BARONE RACING to receive an RMA # (Return to Manufacturer Authorization Number) at which time you will be provided with instructions for returning the faulty product

CONTACT:

If you have questions or problems, e-mail us at jamesbaroneracing@gmail.com. Posting questions or problems in the forums or other social media outlets will only delay you from getting the correct answer or personalized attention from us.