



## **JAMES BARONE RACING**

### **AFTERMARKET PARTS AND ACCESSORIES**

#### **JB ARMOR Mud Flap Installation instructions** **Ford Focus *ST* 2013 and Up**

##### **What you will need:**

- Jack and Jack Stands
- Drill and ¼" drill bit
- Small ratchet wrench
- T-30 torx bit
- Philips head screw driver
- 7/16" wrench
- Pic tool

##### **Parts List:**

- 2 – Front mud flaps
- 2 – Rear mud flaps
- 14 – Round black nylon washers
- 12 – Metal edge clips
- 8 – 1" stainless philips head bolts
- 6 – 2 1/4" stainless philips head bolts
- 2 – Stainless support brackets (Rear Flaps)
- 6 – 5/8" Nylon spacers
- 12 – 1/2" Nylon spacers
- 2 – ¼" Lock washer
- 2 – ¼" Flat washers
- 2 – ¼" Nuts

Scratches and inclusions in the mud flaps, some worse than others, are a normal and an unavoidable aspect of the manufacturing process. Most can only be seen when held up in direct light and will never be seen when the product is actually installed.

## FRONT Installation Instructions (Both sides are the same)

- Begin by parking on a smooth level surface with the emergency brake engaged. Jack up the front of the vehicle, position jack stands underneath both sides and remove both front wheels.



Refer to your vehicle's owner's manual for proper jack placement and supporting procedures.

**Never get under a vehicle without the proper support in place.**

1. Remove the front wheel and the 3 plastic push fasteners using a flat head screw driver.



2. Pull the inner fender liner away from the fender and install 3 metal edge clips over the tabs in the fender as shown. Put the fender liner back in place.



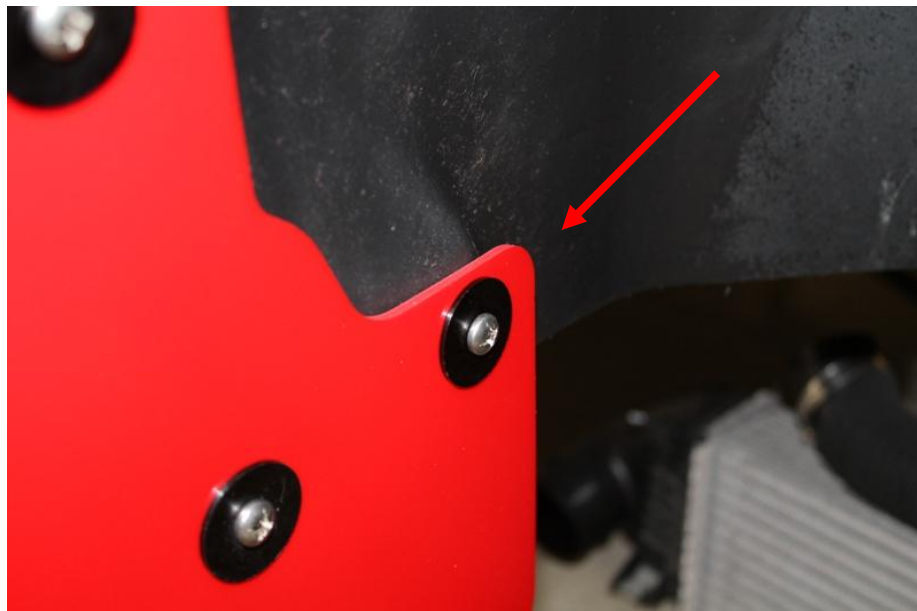
3. Place three black nylon washers on three 1" philips head bolts and loosely install the mud flap.
4. Push the mud flap in towards the motor, level the mud flap and tighten it using a philips head screw driver.



- Next, using a drill and ¼" drill bit, drill through the remaining hole in the mud flap and through the fender liner.



- Place one round black nylon washer on one 1" philips head bolt. Put the philips head bolt through the mud flap and through the hole drilled in the in fender liner. From below and behind the fender liner, place a flat washer, lock washer and nut on the bolt leaving it loose. Loosen the philips head screws tightened in step 4 and adjust the mud flap in or out depending on how much reveal you would like. Then, tighten all 4 with a philips head screw driver and a 7/16 wrench.



This completes the installation of the front mud flaps.

## Rear Installation Instructions (Both sides are the same)

- Begin by parking on a smooth level surface with the emergency brake engaged. Jack up the rear of the vehicle, position jack stands underneath both sides and remove both rear wheels.



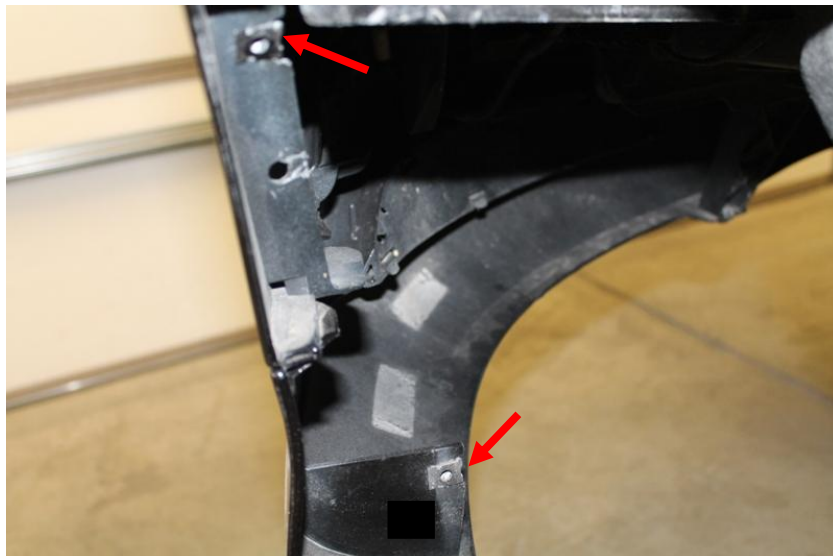
Refer to your vehicle's owner's manual for proper jack placement and supporting procedures.

**Never get under a vehicle without the proper support in place.**

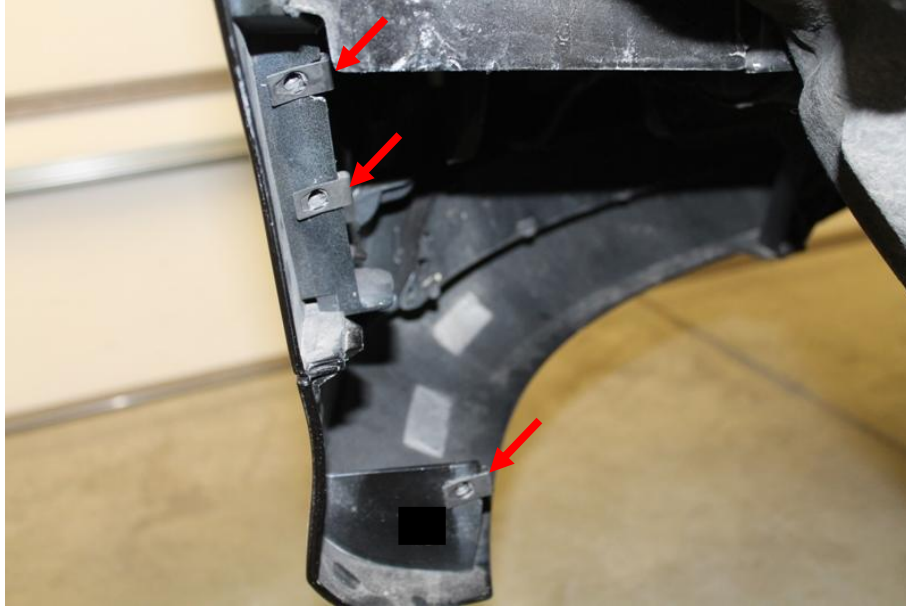
7. Remove the wheel. Then remove the two torx screws using a ratchet wrench and a T-30 torx bit.



8. Peel the inner fender liner back and carefully remove the two metal edge clips used to secure the two torx screws removed in the previous step. This can be done with a pic or with a tiny flat head screw driver.



9. Next install 3 metal edge clips included with you kit in the locations shown below.



10. With a pic, clearance a hole in the fender liner larger than needed to slip one of the philips head bolt through. This is done to expose the fastener for the hole second from the top.



11. Next, slip the two metal edge clips removed in step 8 on to the stainless support bracket.  
(Passenger side orientation shown below. The driver's side bracket will be installed opposite.)



12. Using the two torx screws removed in step 7; loosely install the stainless bracket on to the rear of the mud flap. (The side with the *ST* logo)



13. Place one black washer on one long bolt and slip it through the top hole in the mud flap and support bracket. Then, add one 5/8" long black nylon spacer and two 1/2" long black nylon spacers.



14. Loosely install the assembly in to the top hole in the rear bumper.





15. Do the same for the next one down leaving it loose.



16. Do the same for the last one leaving it loose as well.



17. Once all 3 bolts are started, level the mud flap and begin tightening the center philips head bolt first. While tightening, push the mud flap towards the rear of the vehicle to help contour the support bracket to the curvature of the bumper.



18. Tighten the remaining two philips head bolts and the two torx screws.



**Congratulations!! You've now completed the installation of your new JB ARMOR Focus *ST* Mud Flaps**

## **SHIPPING**

All orders are carefully inspected and packaged prior to shipment. The recipient must inspect all shipments for damage and report any damage to the carrier and JAMES BARONE RACING immediately. JAMES BARONE RACING is not responsible for damage that occurs during shipping.

## **RETURNS:**

All sales are final. JAMES BARONE RACING will only accept returns in the event of a manufacturer's defect. Defective items will be exchanged for the identical item or repaired at our discretion. Return shipping costs are the responsibility of the purchaser. An RMA # (Return to Manufacturer Authorization Number) must accompany all returns. In rare cases when a return is accepted, a 15% restocking fee will be deducted from the refund or credit. Shipping charges are non-refundable. No returns or exchanges will be accepted after 30 days.

## **DISCLAIMERS:**

Failure to carefully follow the installation instructions for your JAMES BARONE RACING product could result in significant property damage, personal injury, injury to others or even death. Please take the time to read and thoroughly understand the instructions prior to installation. The instructions are as accurate as possible and may vary slightly from model year to model year. Professional installation is recommended.

Neither JAMES BARONE RACING nor any of its employees, officers, directors, or shareholders will accept responsibility for improper use or installation of our products. JAMES BARONE RACING is not responsible for the misuse, incorrect installation, or failure of any product we sell. Under no circumstances, including but not limited to negligence, will JAMES BARONE RACING be liable for special or consequential damages that result from the use or inability to use our products. JAMES BARONE RACING does not assume responsibility for any damage to the user, driver, passenger or vehicle resulting from the operation of a JAMES BARONE RACING product. PLEASE DRIVE RESPONSIBLY.

## **WARRANTY:**

All JAMES BARONE RACING products carry a lifetime warranty to the original purchaser. Warranty is non-transferable. Warranty does not cover damage or failure caused by abuse, misuse, faulty installation or repairs not conducted by JAMES BARONE RACING. JAMES BARONE RACING is not liable for consequential damages arising from the use of our products or any indirect damages resulting in the loss of property, revenue or costs for towing, removal, installation, or re-installation. To receive warranty service you must contact JAMES BARONE RACING to receive an RMA # (Return to Manufacturer Authorization Number) at which time you will be provided with instructions for returning the faulty product

## **CONTACT:**

If you have questions or problems, e-mail us at [jamesbaroneracing@gmail.com](mailto:jamesbaroneracing@gmail.com). Posting questions or problems in the forums or other social media outlets will only delay you from getting the correct answer or personalized attention from us.