



**James Barone Racing**  
**Aftermarket Parts and Accessories**

## **2013+ FORD FOCUS ST/RS STAGE 2** **REAR TORQUE MOUNT** **INSTALLATION INSTRUCTIONS**

**Tooling:**

- ✓ Ratchet
- ✓ 6" Extension
- ✓ 13mm Socket
- ✓ 15mm Socket
- ✓ T-30 Torx Bit
- ✓ 19mm Closed End Wrench
- ✓ 13mm Closed End Wrench



**Included:**

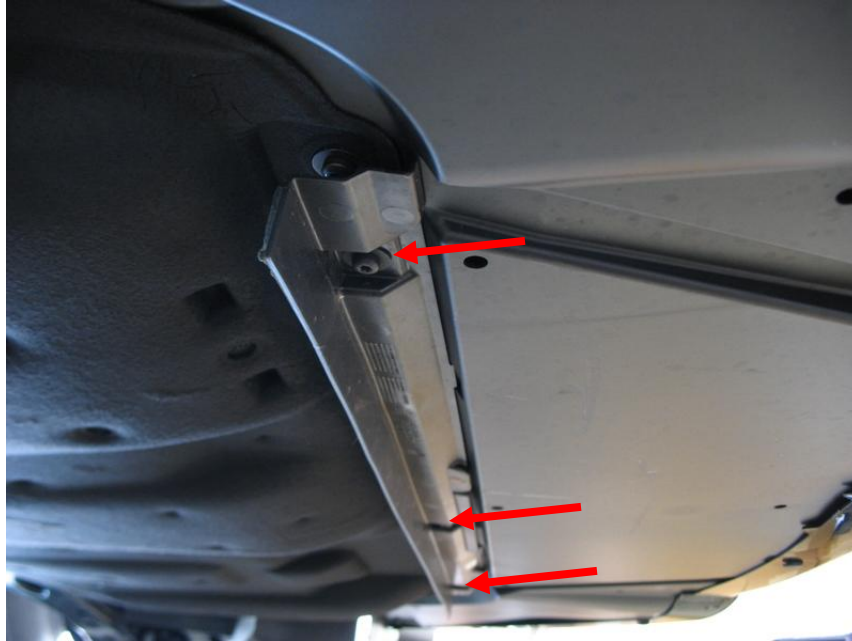
- ✓ 1 stage 2 rear motor mount
- ✓ 1 bolt
- ✓ 2 ½" flat washers
- ✓ 1 ½" lock washer
- ✓ 1 ½" nut

- ❖ Begin by parking on a smooth level surface with the emergency brake engaged. Jack up the front of the vehicle and position jack stands underneath both sides. Put the car in neutral.

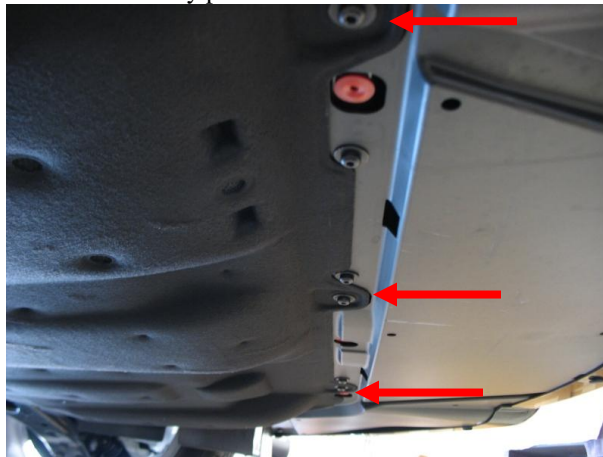


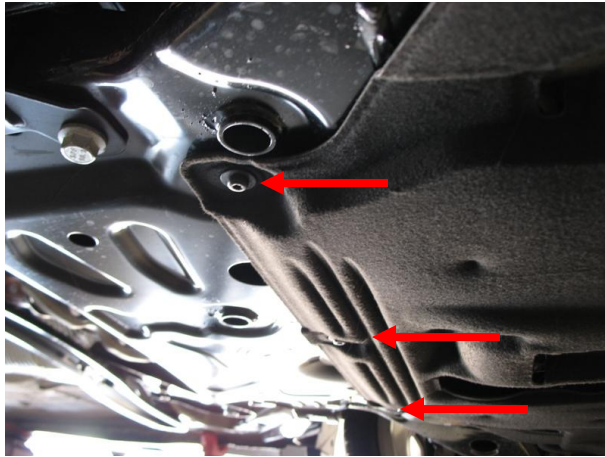
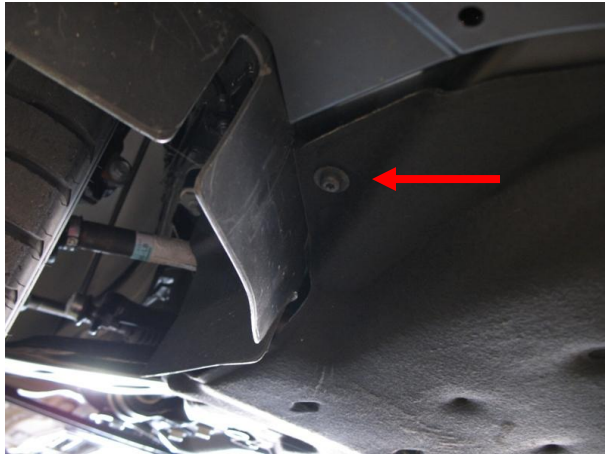
**Refer to you vehicles owner's manual for proper jack placement and supporting procedures. Never get under a vehicle without the proper support in place.**

1. Remove the front portion of the belly pan using the T-30 torx bit.

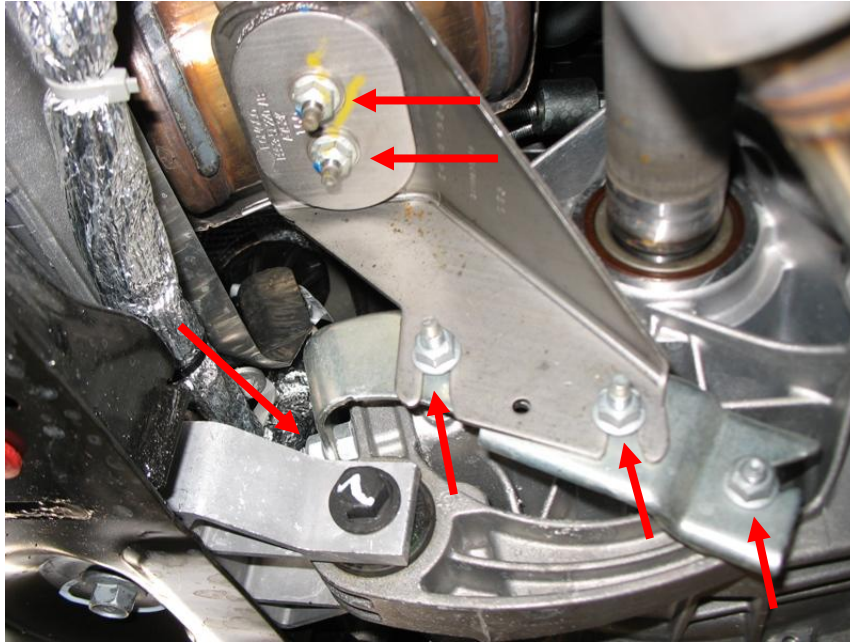


2. Remove the remainder of the belly pan use the T-30 torx bit.

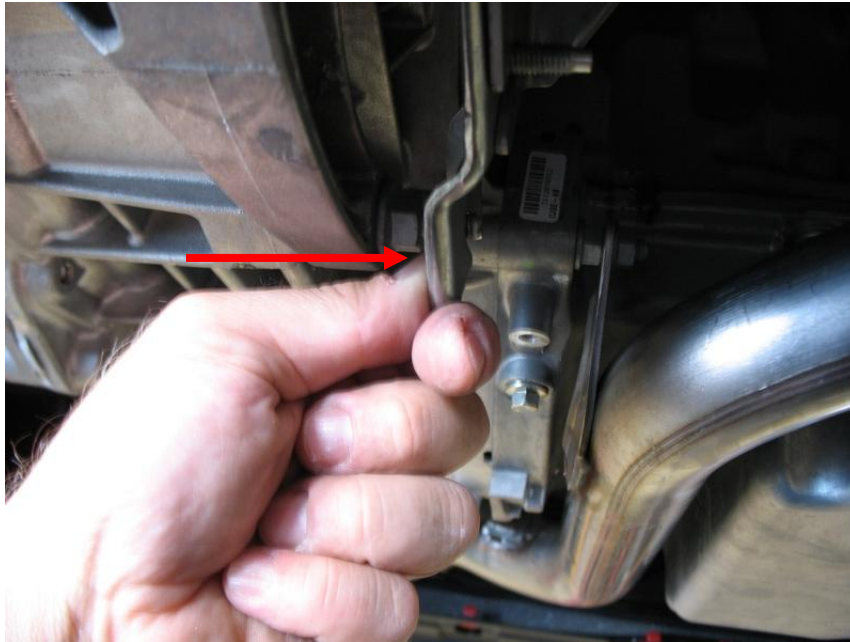




3. Once the belly pan is removed and the rear mount is exposed, remove the 6 nuts shown below that secure the down pipe support bracket to the transmission with a 13mm 6-point socket and 6" extension.

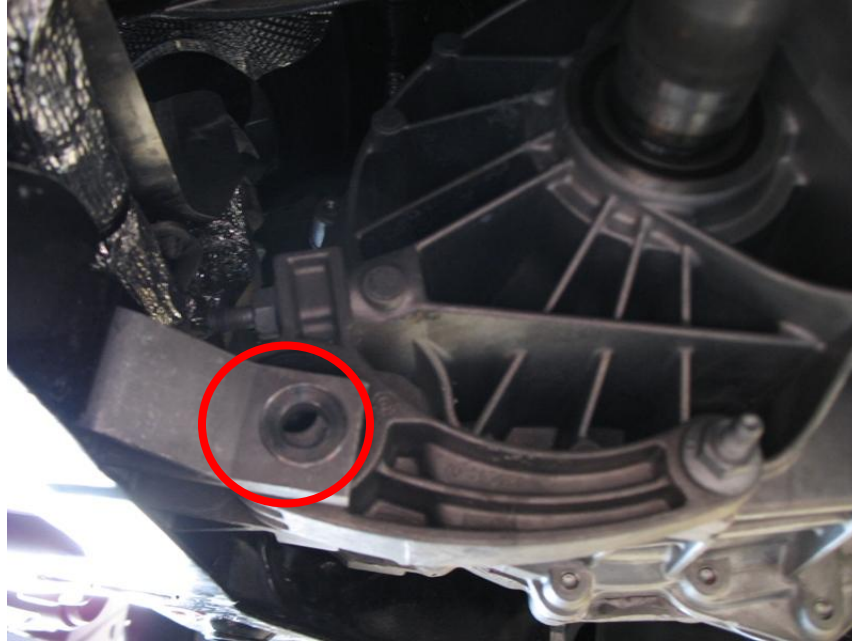


4. With the 6 nuts removed in the previous step now, remove the bracket that secures the down pipe to the transmission by applying pressure to the bracket and pushing it towards the passenger side of the vehicle.





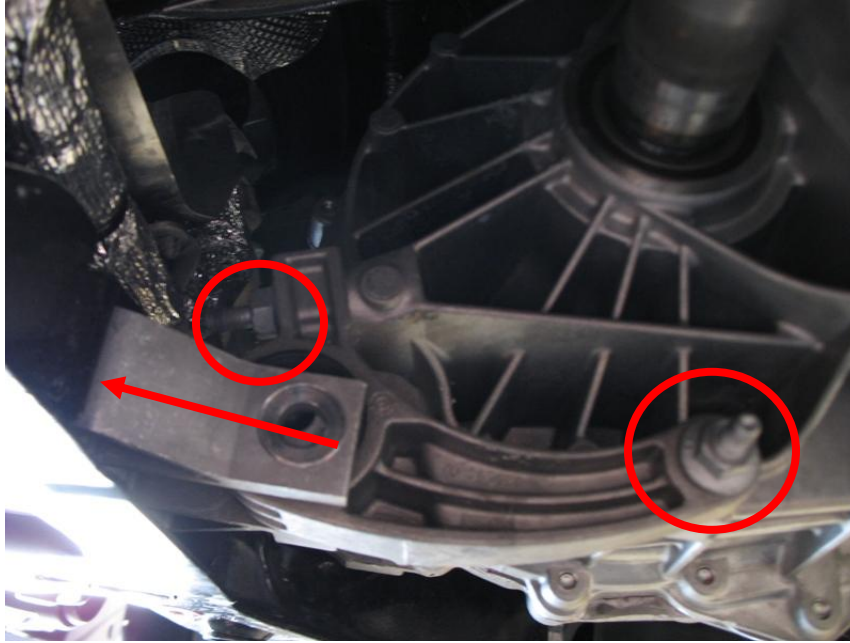
5. Using a 15mm 6-point socket remove the horizontal bolt that secures the motor mount to the transmission.



6. Using a 15mm 6-point socket remove the vertical bolt that secures the motor in the sub-frame.



7. Push the OEM mount towards the rear of the vehicle deep in to the sub-frame then with a 15mm closed end wrench remove the 2 bolts shown below that secure the motor mount bracket to the transmission. The motor may need to be pivoted towards the front to remove the rear most bolt. The engine pivots easily by hand.



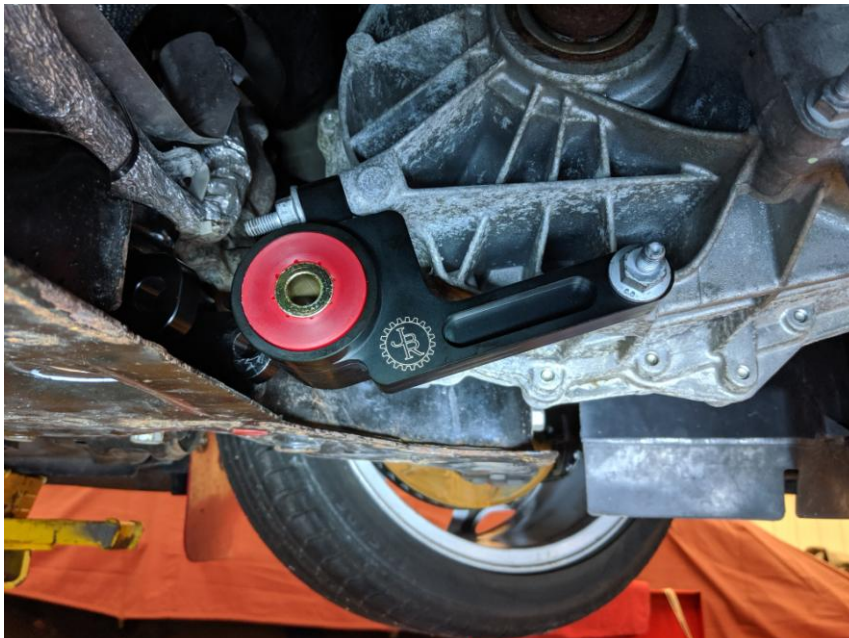
8. With a 15mm closed end wrench remove the 3<sup>rd</sup> and final bolt that secures the motor mount bracket to the transmission and remove the bracket and the motor mount.



9. Install the rear portion of you new JBR mount in to the sub-frame. Be sure the mount is installed with the arrow pointing up. Push the mount deep in to the sub-frame.



10. Reinstall your new JBR motor mount bracket using the three bolts remove in steps 7 and 8. Leave all bolts loose.





11. Next, Slide the rear portion of your JBR mount forward and line it up with the hole in the bushing. Place the flat washer on to the bolt included with your mount and slid it through from the passenger side. Add the remaining flat washer, lock washer and nut. Leaving it loose.



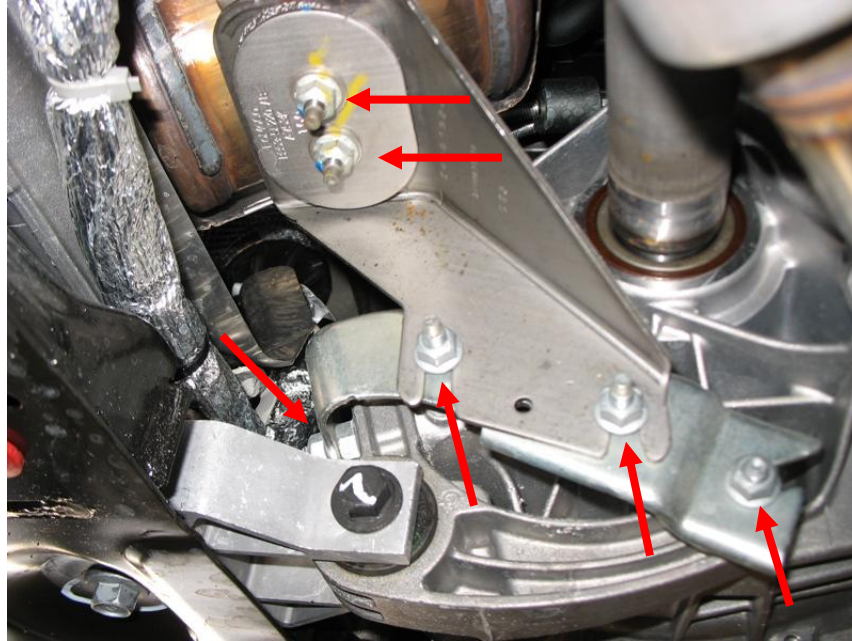
12. Install and tighten the vertical bolt removed in step 6. You may need to pivot/wiggle the motor a bit to install the bolt.



13. Tighten the 3 bolts securing your JBR motor mount bracket to the transmission installed in step 10.  
14. Tighten the horizontal bolt installed in step 11.



15. Reinstall the downpipe support bracket, tighten all 6 nuts and reinstall the belly pan.



**CONGRATULATIONS, YOU'RE ALL DONE!!**  
**You've just completed the installation of your new JBR Stage 2 Rear Engine Mount.**