



## James Barone Racing Aftermarket Parts and Accessories

### 2014+ Mazda 3/6 and CX-5 (2WD) Rear Sway Bar Installation Instructions.

#### What you will need:

- Jack, jack stands
- Socket wrench
- Socket wrench extensions
- 14mm socket
- 17mm Socket
- 14mm box wrench
- 5mm allen wrench
- Flat head screw driver

- ❖ **Begin by parking on a smooth level surface with the emergency brake engaged. Jack up the rear of the vehicle and position jack stands underneath both sides. Ramps cannot be used.**



Refer to your vehicle's owner's manual for proper jack placement and supporting procedures.

**Never get under a vehicle without the proper support in place.**

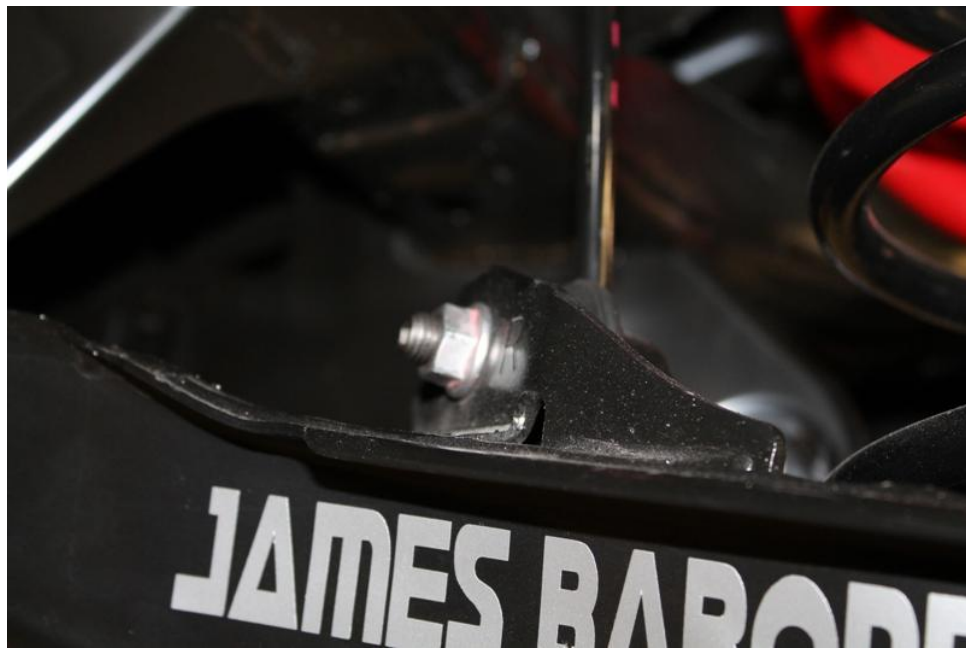
1. Start by removing the passenger side rear wheel.
2. Place a jack up tight beneath the lower control arm as shown below.



3. Using a 14mm deep socket, extension and socket wrench, remove the 2 upper shock mount bolts.



4. Using a 14mm box wrench, remove both nuts securing the end links to the lower control arms. The use of a 5mm allen wrench may be necessary.



- Using a flat head screw driver remove the clip securing the brake line.



- Using a 17mm socket remove the lower control arm bolt.



7. Slowly lower the jack, lower the rear control arm and remove the rear spring.
  - **Note the orientation of the spring and how it's indexed in the lower control arm.**



8. Using a 17mm socket remove the lower shock mount and remove the shock.



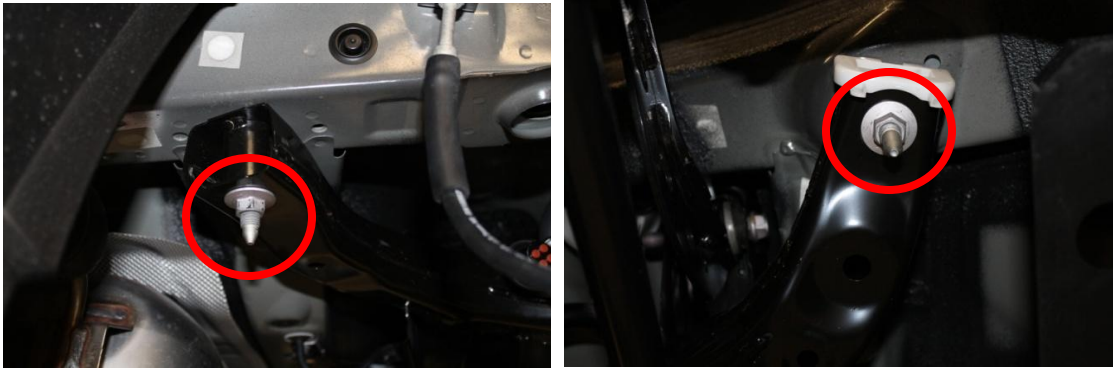
9. Using a 14mm box wrench, remove the end links from the sway bar. It may be necessary to rotate the bar up in order to use a 5mm allen wrench too. The end links may also be folder parallel to the sway bar and removed along with the sway bar in the next step.
  - **Note the location of the end links, there is a right and left end link.**



10. Using a 14mm socket remove the 4 nuts securing the sway bar bushings to the sub-frame. Then carefully remove the sway bar out from above the sub-frame towards the passenger side of the vehicle.



11. Using a 17mm socket and extension, **loosen** the 2 nuts on the driver's side securing the sub-frame to the chassis. Leaving the nuts in place held by only a few threads.



12. Next, remove both nuts securing the passenger side sub-frame to the chassis and lower the sub-frame as far as possible. The end of the studs should no longer be visible.

13. Using the supplied grease packets, apply grease to the inside of each of the new sway bar bushings and affix them to each side your new JBR True Torsion Rear Sway Bar as shown below.

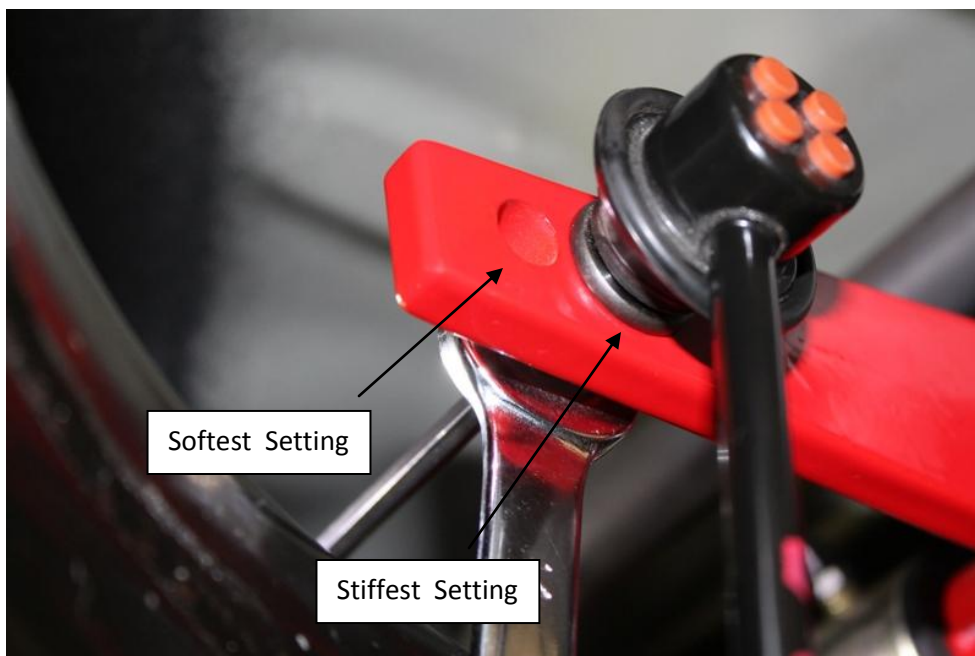


14. Carefully install the sway bar in to the vehicle from the passenger side.

15. Install the bushing brackets over the bushings and on to the studs in the sub-frame. Then loosely install the nuts to secure them as shown below.



16. Confirm the sway bar is centered in the car, then tighten the 4 nuts securing the sway bar to the sub-frame as shown in step 15
17. Install the right and left end links to the sway bar first using a 5mm allen wrench and a 14mm box wrench. It will be necessary to rotate the bar up above the sub-frame to insert the allen wrench.
- **JBR recommends using a few drops of Loctite to ensure the end links remain tight.**
  - **The stiffest setting is the holes closest to the bar and the softest setting is the holes closest to the end of the arm.**



18. Next, secure the end links to the lower control arms.  
    ➤ **JBR recommends using a few drops of Loctite to ensure the end links remain tight.**
19. Raise the sub-frame and install the nuts securing the sub-frame removed in step 12 and tighten the 2 nuts loosened in step 11.
20. Install the shock back on to the lower shock mount removed in step 8.
21. Reinstall the spring correctly indexing it in to the lower control arm removed in step 7.
22. Using a jack, raise the lower control are and reinstall the bolt removed in step 6. A small bar or punch will aid in aligning the arm with the hole in the spindle removed in step 7.
23. Attach the upper shock mount and the clip that secures the brake line removed in steps 3 and 5.
24. Reinstall the wheel and lower the vehicle.

**Congratulations!! You've now completed the installation of  
your new JBR True Torsion Rear Sway Bar!!**



## **SHIPPING**

All orders are carefully inspected and packaged prior to shipment. The recipient must inspect all shipments for damage and report any damage to the carrier and JAMES BARONE RACING immediately. JAMES BARONE RACING is not responsible for damage that occurs during shipping.

## **RETURNS:**

All sales are final. JAMES BARONE RACING will only accept returns in the event of a manufacturer's defect. Defective items will be exchanged for the identical item or repaired at our discretion. Return shipping costs are the responsibility of the purchaser. An RMA # (Return to Manufacturer Authorization Number) must accompany all returns. In rare cases when a return is accepted, a 15% restocking fee will be deducted from the refund or credit. Shipping charges are non-refundable. No returns or exchanges will be accepted after 30 days.

## **DISCLAIMERS:**

Failure to carefully follow the installation instructions for your JAMES BARONE RACING product could result in significant property damage, personal injury, injury to others or even death. Please take the time to read and thoroughly understand the instructions prior to installation. The instructions are as accurate as possible and may vary slightly from model year to model year. Professional installation is recommended.

Neither JAMES BARONE RACING nor any of its employees, officers, directors, or shareholders will accept responsibility for improper use or installation of our products. JAMES BARONE RACING is not responsible for the misuse, incorrect installation, or failure of any product we sell. Under no circumstances, including but not limited to negligence, will JAMES BARONE RACING be liable for special or consequential damages that result from the use or inability to use our products. JAMES BARONE RACING does not assume responsibility for any damage to the user, driver, passenger or vehicle resulting from the operation of a JAMES BARONE RACING product. PLEASE DRIVE RESPONSIBLY.

## **WARRANTY:**

All JAMES BARONE RACING products carry a lifetime warranty to the original purchaser. Warranty is non-transferable. Warranty does not cover damage or failure caused by abuse, misuse, faulty installation or repairs not conducted by JAMES BARONE RACING. JAMES BARONE RACING is not liable for consequential damages arising from the use of our products or any indirect damages resulting in the loss of property, revenue or costs for towing, removal, installation, or re-installation. To receive warranty service you must contact JAMES BARONE RACING to receive an RMA # (Return to Manufacturer Authorization Number) at which time you will be provided with instructions for returning the faulty product.

## **CONTACT:**

If you have questions or problems, e-mail us at [jamesbaroneracing@gmail.com](mailto:jamesbaroneracing@gmail.com). Posting questions or problems in the forums or other social media outlets will only delay you from getting the correct answer or personalized attention from us.