



JAMES BARONE RACING

AFTERMARKET PARTS AND ACCESSORIES

JB ARMOR Mud Flap Installation instructions **GEN 3 Mazda 3 Sedan 2014+**

What you will need:

- Jack and Jack Stands
- Drill and ¼" drill bit
- Black Marker
- Philips head screw driver
- 7/16" wrench

Parts List:

- 2 – Front mud flaps
- 2 – Rear mud flaps
- 14 - Large black nylon washers **(Round)**
- 2 - Large Black nylon washers **(Clipped)**
- 6 - Black metal edge clips
- 14 - Short stainless bolts (1/4 – 20 x 1 pan head machine screw)
- 2 - Long stainless bolts (1/4 – 20 x 1.5 pan head machine screw)
- 2 - Black round nylon spacers
- 10 - ¼ Stainless hex nuts
- 10 - ¼ Stainless flat washers
- 10 - ¼ Stainless lock washers

Scratches and inclusions, some worse than others, are a normal and unavoidable aspect of the manufacturing process. Most can only be seen in direct light and will never be seen when the product is installed.

FRONT (Both sides are the same)

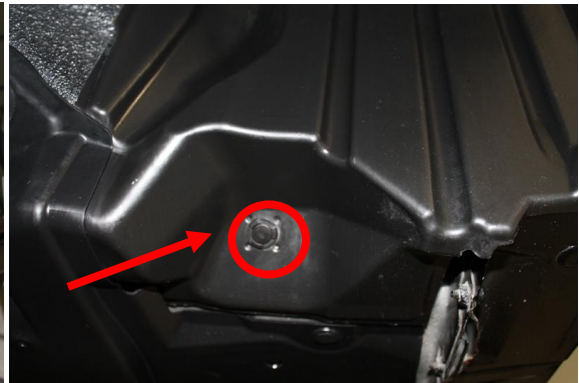
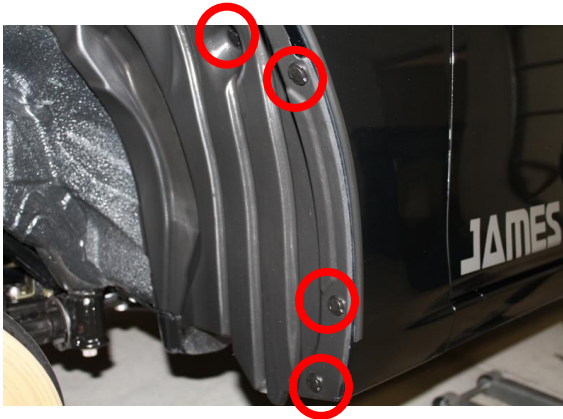
- Begin by parking on a smooth level surface with the emergency brake engaged. Jack up the front of the vehicle, position jack stands underneath both sides and remove both front wheels.



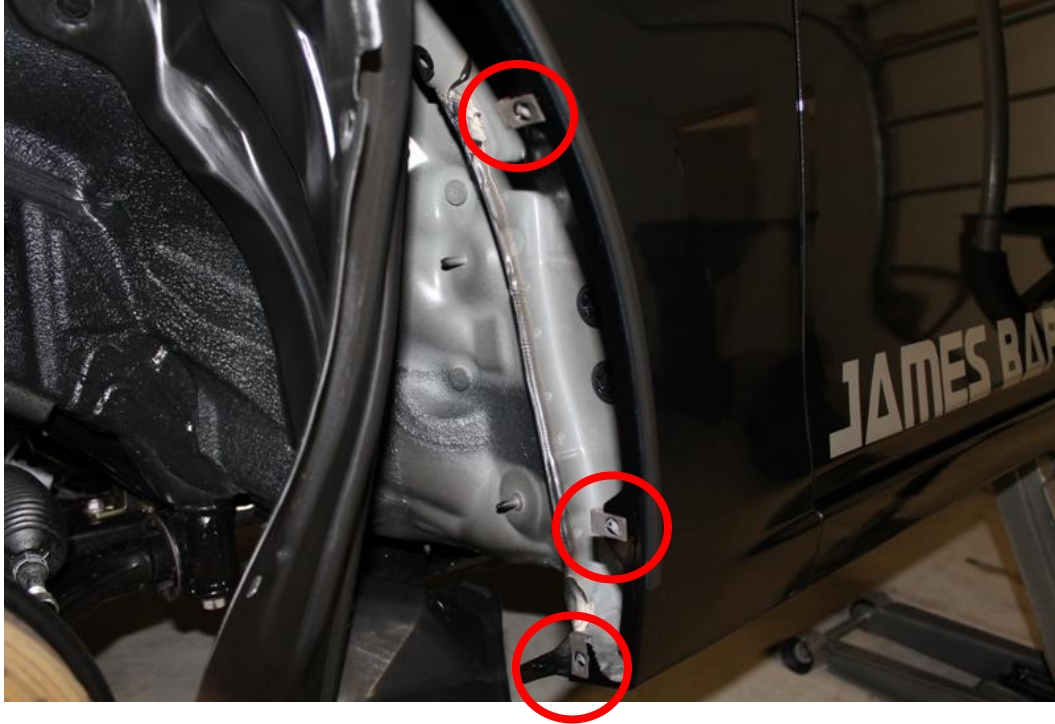
Refer to your vehicle's owner's manual for proper jack placement and supporting procedures.

Never get under a vehicle without the proper support in place.

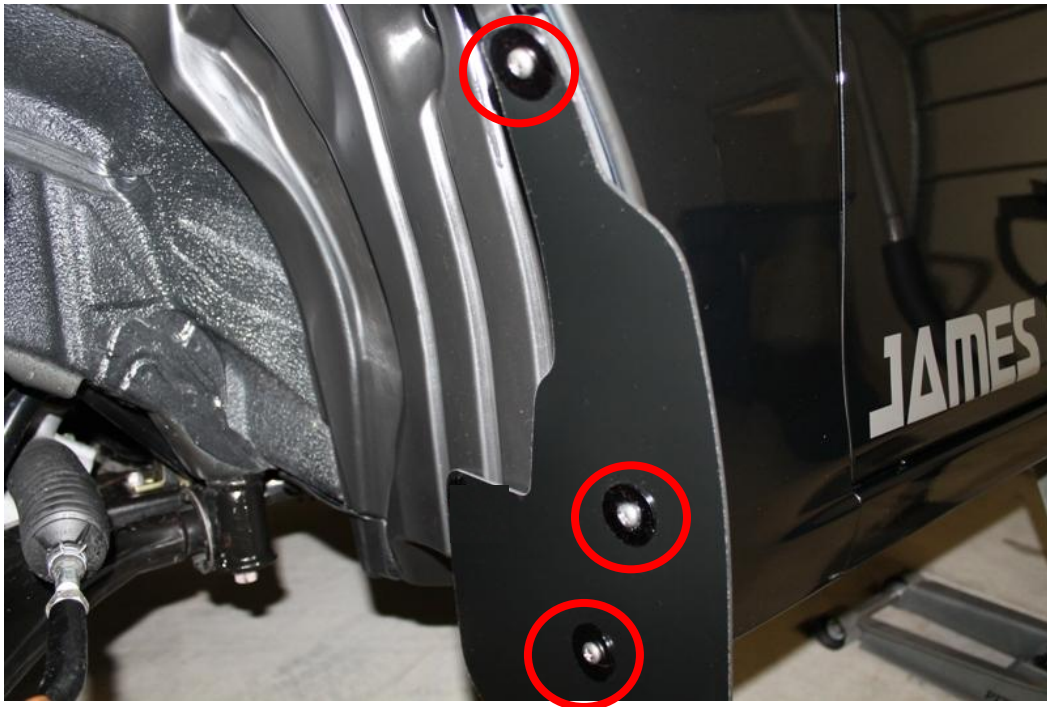
1. Remove all the circled fasteners including the one beneath the vehicle using a flat head screw driver.



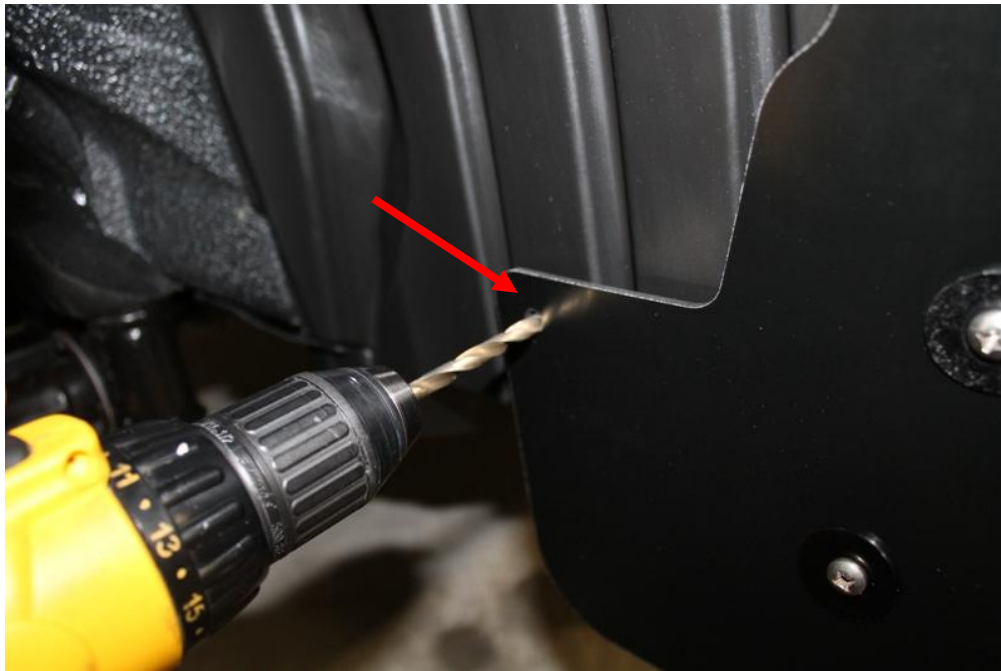
2. Pull the inner fender liner away from the fender and install 3 metal edge clips over the tabs in the fender as shown. Then, put the fender liner back in place.



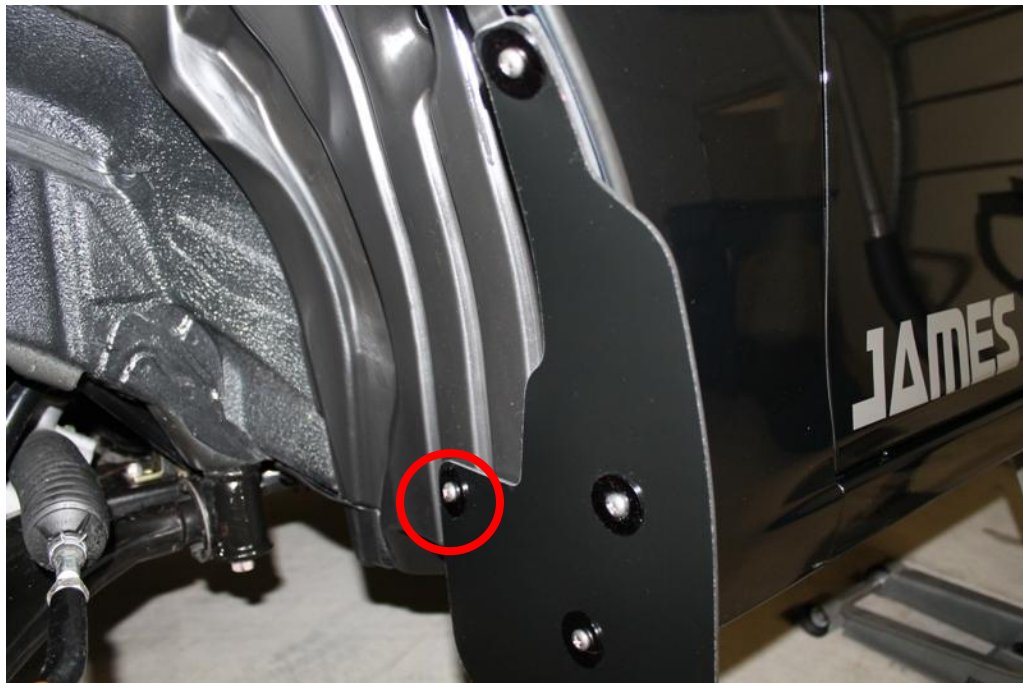
3. Place three round black nylon washers on three 1" philips head bolts and secure the front mud flap to the three spots the metal edge clips were installed making sure it's straight and level, then tighten.



4. Next, using a drill and 1/4" drill bit, drill through the inner hole in the mud flap and through the fender liner.



5. Place one round black nylon washer on one 1" philips head bolt. Put the philips head bolt through the mud flap and through the hole drilled in the in fender liner. From beneath and behind the fender liner, place a flat washer, lock washer and nut on the bolt. Tighten with a philips head screw driver and a 7/16 wrench.



Rear (Both sides are the same)

- Begin by parking on a smooth level surface with the emergency brake engaged. Jack up the rear of the vehicle, position jack stands underneath both sides and remove both Rear wheels.



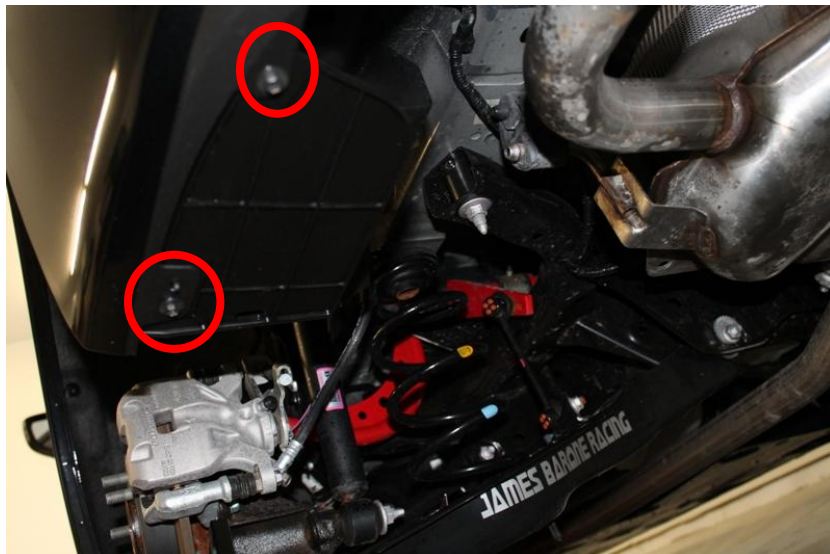
Refer to your vehicle's owner's manual for proper jack placement and supporting procedures.

Never get under a vehicle without the proper support in place.

1. Remove the three fasteners securing the inner fender liner circled below. Use your fingers for the one on the right, a philips head screw driver for the middle and a flat head for the fastener on the right.



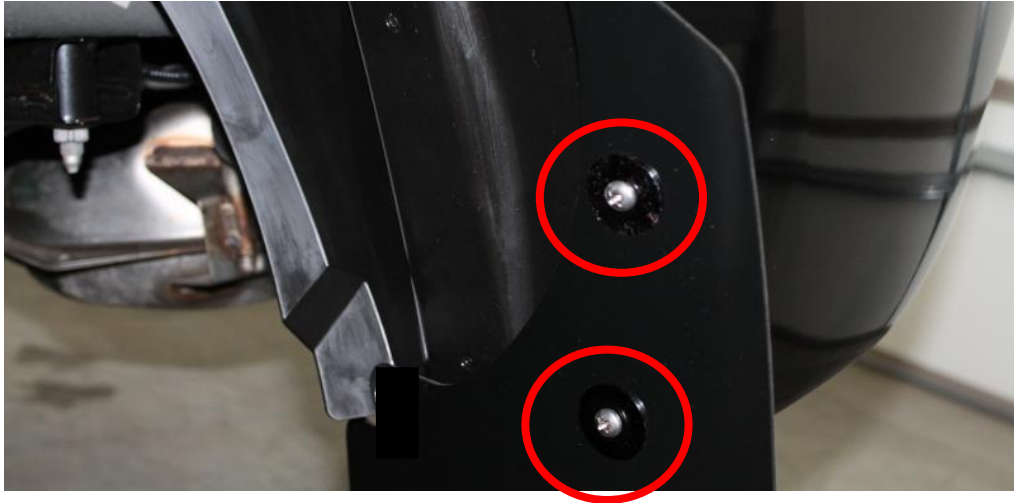
2. Remove the 2 philips head screws securing the remainder of fender liner from below and remove the fender liner from the vehicle.



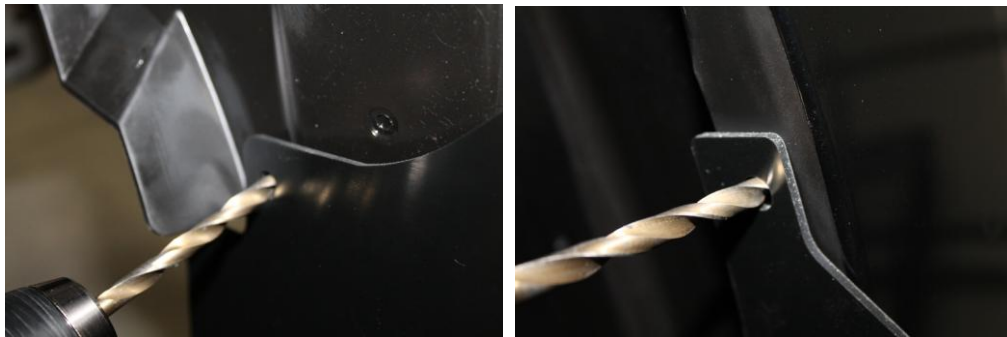
3. With the fender liner removed, mark and drill holes using a 1/4" drill bit, dead center of the two spots indicated below.



4. With the two holes drilled, re-install the fender liner back in the vehicle and secure it with the 5 fasteners removed in steps 1 and 2.
5. Place 2 round black nylon washers on two of the 1" philips head bolts provided. Slip them through the two holes in the mud flap shown below. Install the mud flap on the vehicle using the two holes drilled in the fender liner. Loosely fasten them from beneath and behind the fender liner, place a flat washer, lock washer and nut on each.



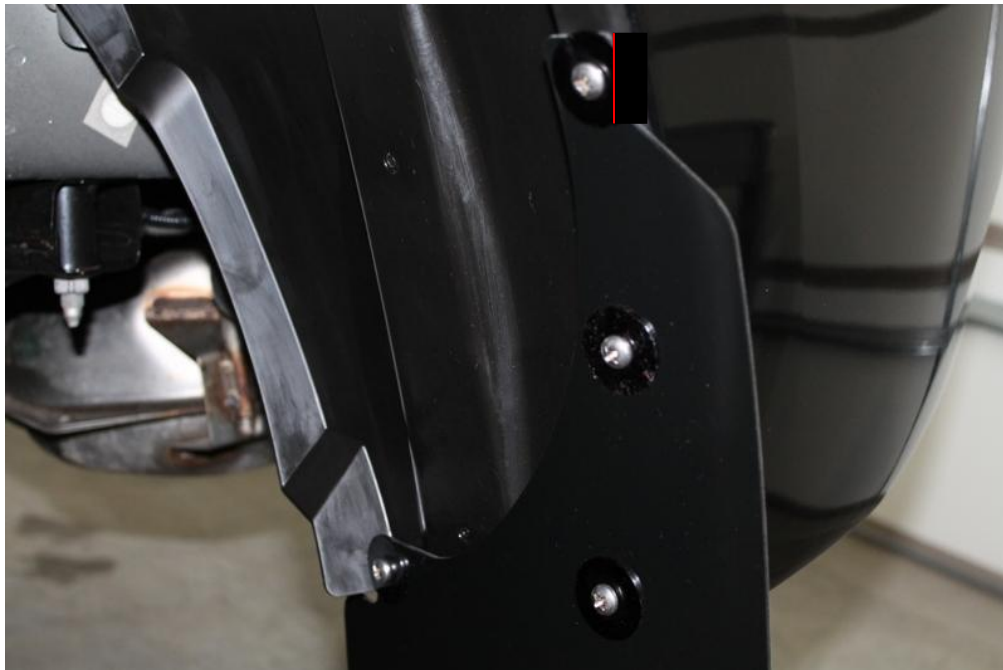
6. Adjust the flap making sure it's level and straight. Then, using a 7/16 wrench and a philips head screw driver, tighten the two bolts installed in the previous step.
7. Next, using a drill and 1/4" drill bit, drill through the inner hole as well as the upper hole in the mud flap and through the fender liner for each.



8. Place one round black nylon washer on one 1" philips head bolt. Slip it through the mud flap and place 1 nylon spacer behind the mud flap and in front of the fender liner. Put the philips head bolt through the hole drilled in the in fender liner. From beneath and behind the fender liner, place a flat washer, lock washer and nut on the bolt. Tighten with a philips head screw driver and a 7/16 wrench.



9. Place one clipped black nylon washer on one 1" philips head bolt. Put the philips head bolt through the mud flap and through the hole drilled in the upper hole in the fender liner. Rotate the clipped washer so the flat side is parallel with the edge of the fender. Then, from beneath and behind the fender liner, place a flat washer, lock washer and nut on the bolt. Tighten with a philips head screw driver and a 7/16 wrench.



Congratulations!! You've now completed the installation of your new JB ARMOR MAZDA 3 Sedan Mud Flaps

SHIPPING

All orders are carefully inspected and packaged prior to shipment. The recipient must inspect all shipments for damage and report any damage to the carrier and JAMES BARONE RACING immediately. JAMES BARONE RACING is not responsible for damage that occurs during shipping.

RETURNS:

All sales are final. JAMES BARONE RACING will only except returns in the event of a manufacturer's defect. Defective items will be exchanged for the identical item or repaired at our discretion. Return shipping costs are the responsibility of the purchaser. An RMA # (Return to Manufacturer Authorization Number) must accompany all returns. In rare cases when a return is accepted, a 15% restocking fee will be deducted from the refund or credit. Shipping charges are non- refundable. No returns or exchanges will be accepted after 30 days.

DISCLAIMERS:

Failure to carefully follow the installation instructions for your JAMES BARONE RACING product could result in significant property damage, personal injury, injury to others or even death. Please take the time to read and thoroughly understand the instructions prior to installation. The instructions are as accurate as possible and may vary slightly from model year to model year. Professional installation is recommended.

Neither JAMES BARONE RACING nor any of its employees, officers, directors, or shareholders will accept responsibility for improper use or installation of our products. JAME BARONE RACING is not responsible for the misuse, incorrect installation, or failure of any product we sell. Under no circumstances, including but not limited to negligence, will JAMES BARONE RACING be liable for special or consequential damages that result from the use or inability to use our products. JAMES BARONE RACING does not assume responsibility for any damage to the user, driver, passenger or vehicle resulting from the operation of a JAMES BARONE RACING product. PLEASE DRIVE RESPONSIBLY.

WARRANTY:

All JAMES BARONE RACING products carry a lifetime warranty to the original purchaser. Warranty is non-transferable. Warranty does not cover damage or failure caused by abuse, misuse, faulty installation or repairs not conducted by JAMES BARONE RACING. JAMES BARONE RACING is not liable for consequential damages arising from the use of our products or any indirect damages resulting in the loss of property, revenue or costs for towing, removal, installation, or re-installation. To receive warranty service you must contact JAMES BARONE RACING to receive an RMA # (Return to Manufacturer Authorization Number) at which time you will be provided with instructions for returning the faulty product

CONTACT:

If you have questions or problems, e-mail us at jamesbaroneracing@gmail.com. Posting questions or problems in the forums or other social media outlets will only delay you from getting the correct answer or personalized attention from us.