



James Barone Racing
Aftermarket Parts and Accessories

2013+ FORD FOCUS *ST* FRONT SWAY BAR INSTALLATION INSTRUCTIONS

Tools Required:

- ✓ Jack
- ✓ Lift or ramps
- ✓ Ratchet wrench
- ✓ Torque Wrench
- ✓ 6" and 12" Extension
- ✓ 10, 13, 15, 18, 21mm Sockets
- ✓ T-30 Torx Bit
- ✓ 13, 15, 17, 19mm wrenches

Includes:

- ✓ 1 adjustable front sway bar
- ✓ 1 set of sway bar bushings and brackets
- ✓ 2 aluminum split collars
- ✓ 2 packets of installation grease

- ❖ Begin by parking on a smooth level surface with the emergency brake engaged. Jack up the front of the vehicle and position jack stands underneath both sides. Put the car in neutral.

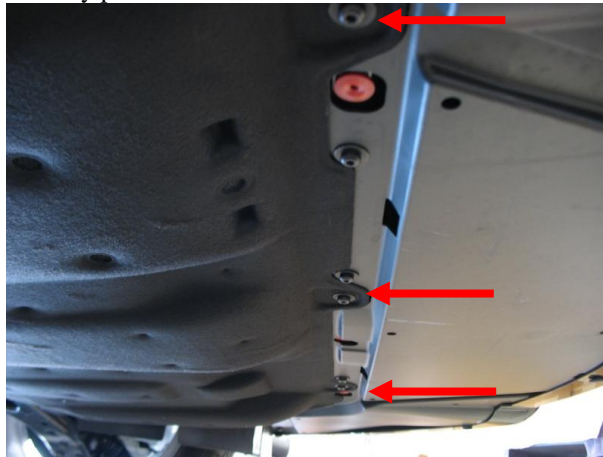


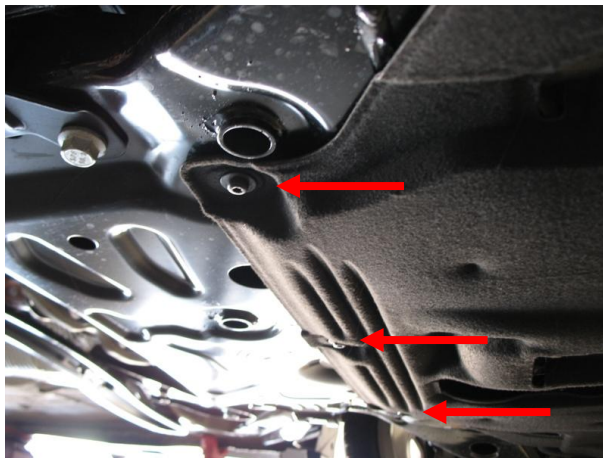
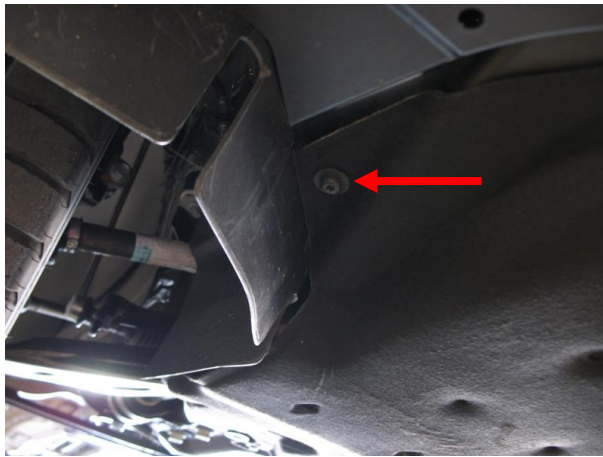
Refer to you vehicles owner's manual for proper jack placement and supporting procedures. Never get under a vehicle without the proper support in place.

1. Remove the front portion of the belly pan using the T-30 torx bit.

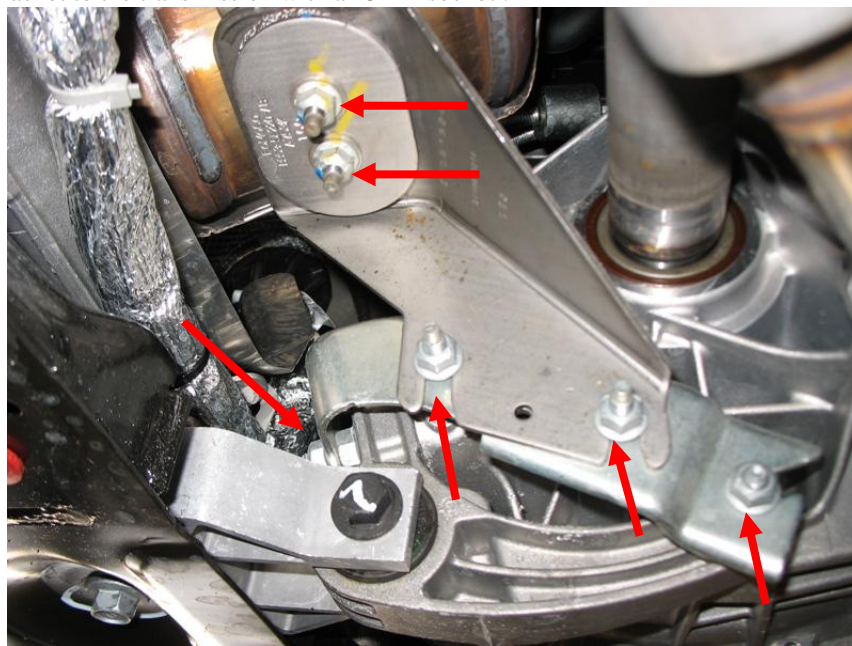


2. Remove the remainder of the belly pan use the T-30 torx bit..





3. Once the belly pan is removed and the rear mount is exposed, remove the 6 nuts shown below that secure the down pipe support bracket to the transmission with a 13mm socket .



4. With the 6 nuts removed in the previous step now, remove the bracket that secures the down pipe to the transmission by applying pressure to the bracket and pushing it towards the passenger side of the vehicle.



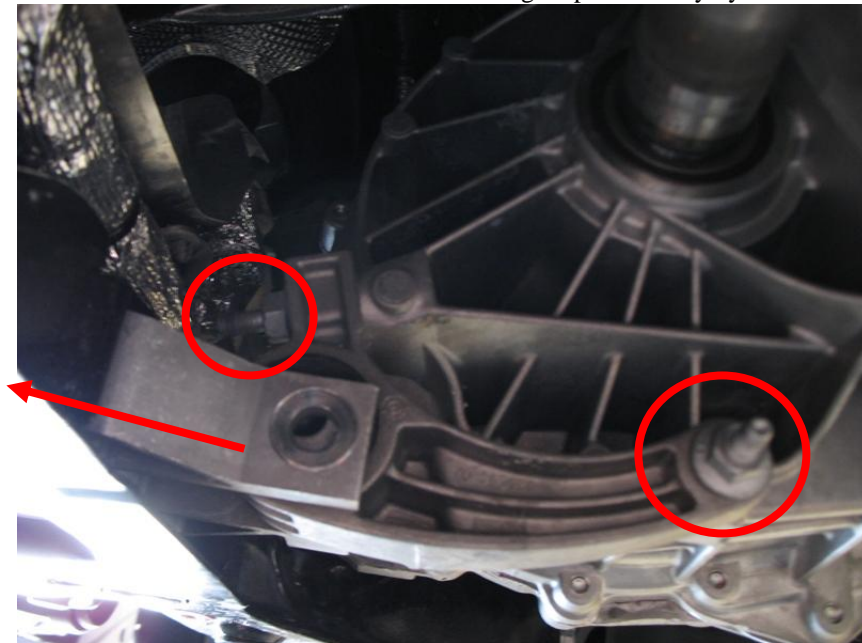
5. Using a 15mm socket remove the horizontal bolt that secures the motor mount to the transmission.



- Using a 15mm socket remove the vertical bolt that secures the motor in the sub-frame.



- Push the OEM mount towards the rear of the vehicle deep in to the sub-frame then with a 15mm closed end wrench remove the 2 bolts shown below that secure the motor mount bracket to the transmission. The motor may need to be pivoted towards the front to remove the rear most bolt. The engine pivots easily by hand.



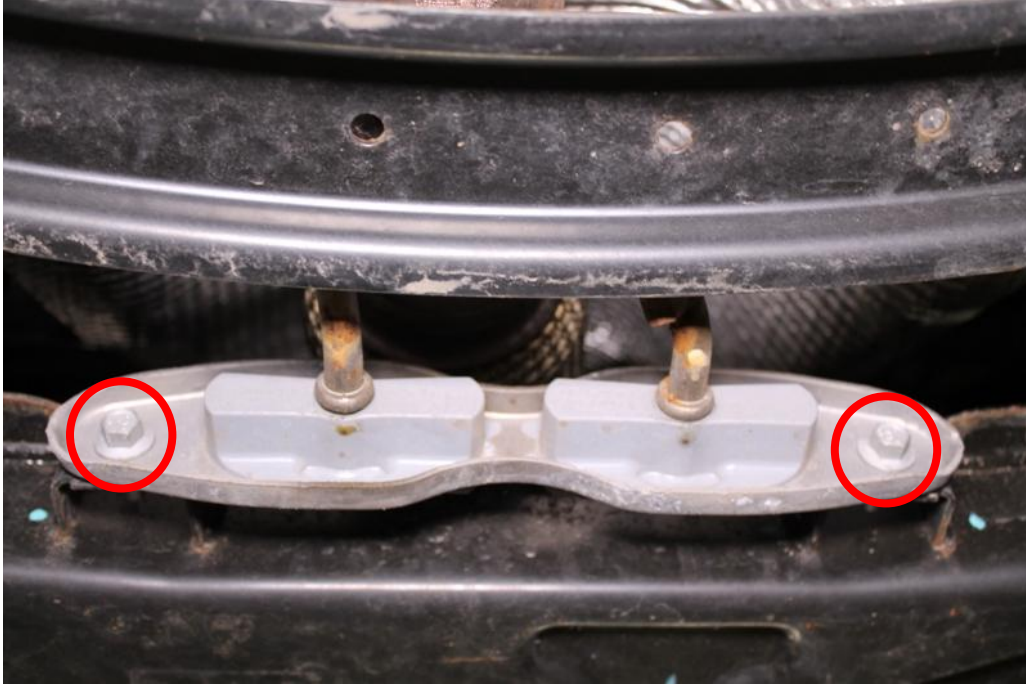
8. With a 15mm wrench remove the 3rd and final bolt that secures the motor mount bracket to the transmission and remove the bracket and the motor mount.



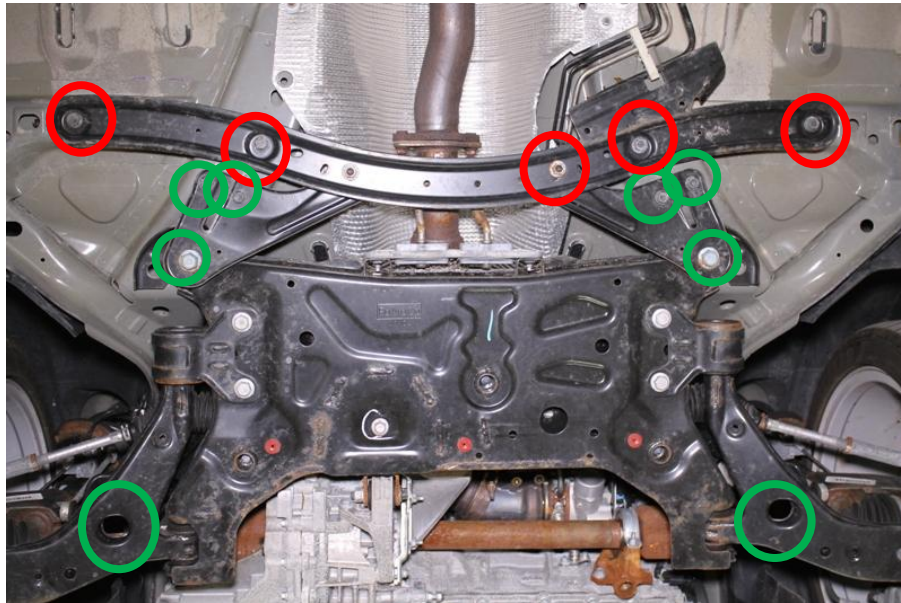
9. Using a 15 and 17mm wrench remove the nut securing the end link to the sway bar on both sides.



10. Using a 10mm socket remove the two bolts that hold the down pipe bracket to the sub-frame.

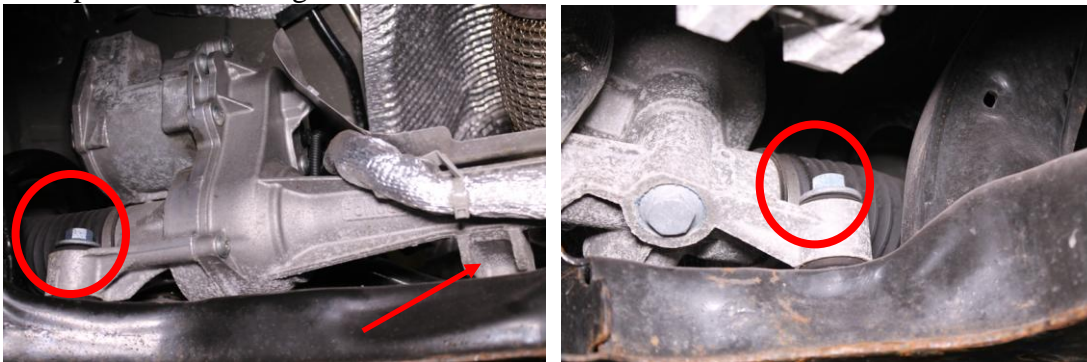


11. Remove the rear sub-frame cross brace using a 15mm socket. Support the sub-frame with a jack or jack pole. Remove 8 bolts using a 13, 15, and 21mm socket. A long extension should be used through the hole in the lower control arm to access the front sub-frame bolts.

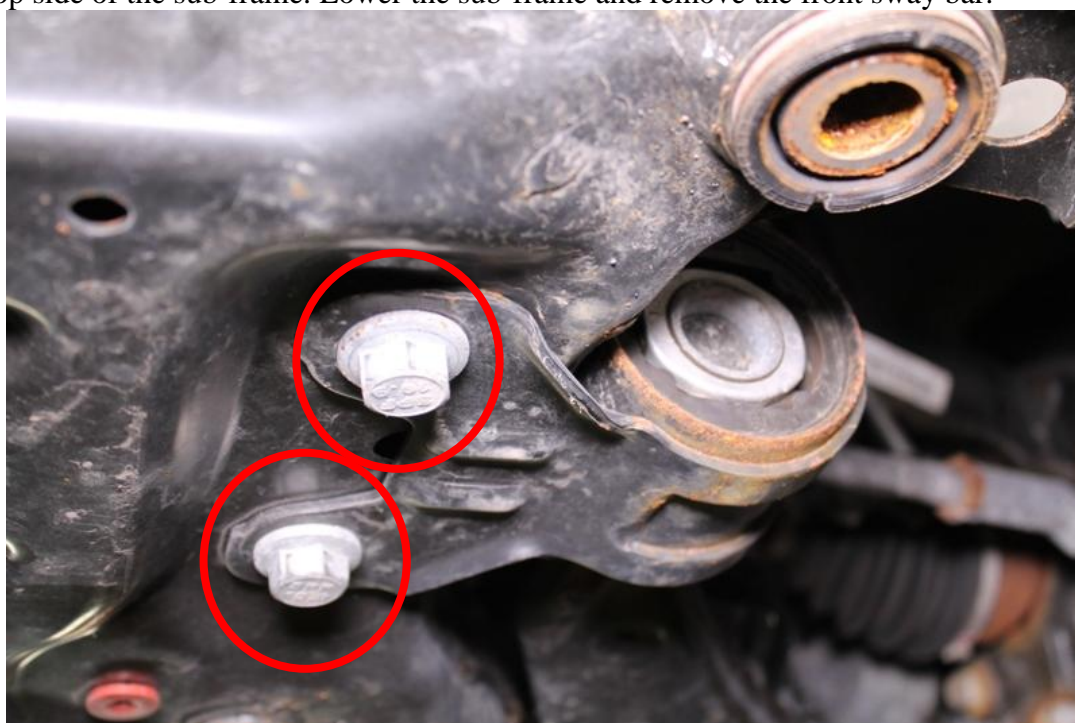


12. Lower the sub-frame.

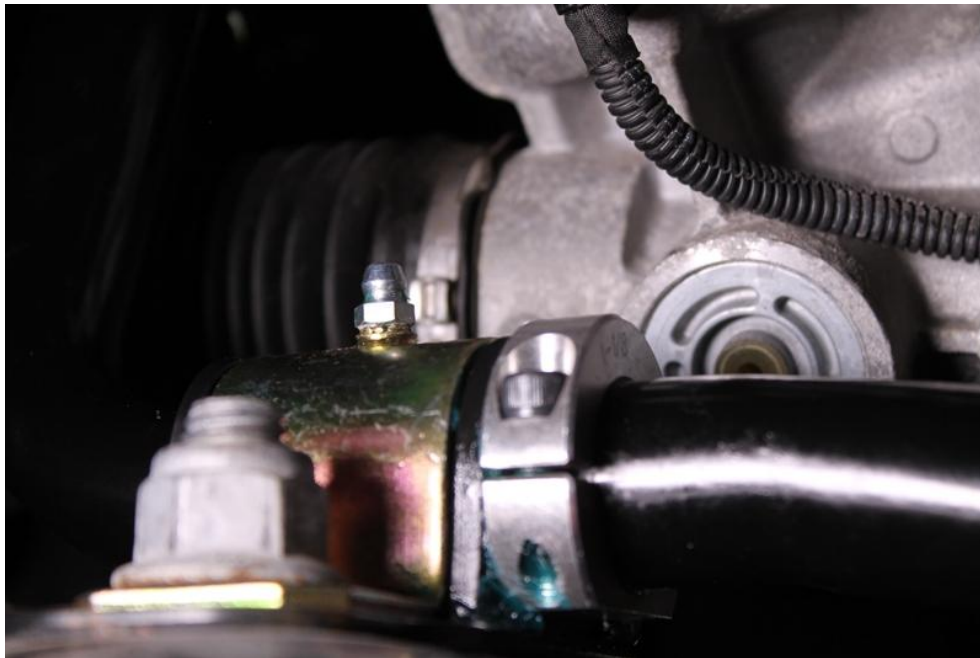
13. Remove 3 bolts securing the steering rack using a 15mm wrench or socket. Lower the sub-frame more to separate the steering rack from the sub-frame.



14. Using an 18mm socket and a 21mm socket remove the 4 bolts that secure the sway bar brackets to the top side of the sub-frame. Lower the sub-frame and remove the front sway bar.



15. Install your new JBR adjustable front sway bar. Grease the inside of the bushings evenly with one packet of grease for each. Install the bushings on to the bar, then the brackets. Loosely re-install the bolts and nuts removed in step 14. Center the bar in the car and install the lateral locating collars with the flat side down and parallel with the sub-frame. Tighten the collars with a 3/16 allen wrench.



16. Complete the installation by following the steps in reverse order of the removal of the OEM sway bar. Use the torque specs below while performing each step.

- ✓ Torque the sway bar bushing bracket bolts to 85 ft-lbs.
- ✓ Torque the steering rack bolts to 81 ft-lbs.
- ✓ Torque the rear sub-frame 21mm bolts to 103 ft-lbs and the 13mm bolts to 14.7 ft-lbs.
- ✓ Torque the front sub-frame bolts to 85 ft-lbs.
- ✓ Torque the rear motor mount assembly bolts 63 ft-lbs.
- ✓ Torque the downpipe isolator bracket bolts to 18 ft-lbs.
- ✓ Torque the sway bar end link nuts to 47 ft-lbs.
 - The hole closest to the end of the sway bar is the softest setting.
- ✓ Torque the rear sub-frame cross brace bolts to 52 ft-lbs.

Use only synthetic grease when greasing the bushings. Grease should be applied at each oil change.

Congratulations!!
You've just completed the installation of your new
JBR front sway bar.

SHIPPING

All orders are carefully inspected and packaged prior to shipment. The recipient must inspect all shipments for damage and report any damage to the carrier and JAMES BARONE RACING immediately. JAMES BARONE RACING is not responsible for damage that occurs during shipping.

RETURNS:

All sales are final. JAMES BARONE RACING will only except returns in the event of a manufacturer's defect. Defective items will be exchanged for the identical item or repaired at our discretion. Return shipping costs are the responsibility of the purchaser. An RMA # (Return to Manufacturer Authorization Number) Must accompany all returns. In rare cases where a return is accepted a 20% restocking fee will be deducted from the refund or credit. Shipping charges are non- refundable. No returns or exchanges will be accepted after 30 days.

DISCLAIMERS:

Failure to carefully follow the installation instructions for your JAMES BARONE RACING product could result in significant property damage, personal injury, injury to others or even death. Please take the time to read and thoroughly understand the instructions prior to installation. The instructions are as accurate as possible and may vary slightly from model year to model year. Professional installation is recommended.

Neither JAMES BARONE RACING nor any of its employees, officers, directors, or shareholders will accept responsibility for improper use or installation of our products. JAME BARONE RACING is not responsible for the misuse, incorrect installation, or failure of any product we sell. Under no circumstances, including but not limited to negligence, will JAMES BARONE RACING be liable for special or consequential damages that result from the use or inability to use our products. JAMES BARONE RACING does not assume responsibility for any damage to the user, driver, passenger or vehicle resulting from the operation of a JAMES BARONE RACING product. PLEASE DRIVE RESPONSIBLY.

WARRANTY:

All JAMES BARONE RACING products carry a lifetime warranty to the original purchaser. Warranty is non-transferable. Warranty does not cover damage or failure caused by abuse, misuse, faulty installation or repairs not conducted by JAMES BARONE RACING. JAMES BARONE RACING is not liable for consequential damages arising from the use of our products or any indirect damages resulting in the loss of property, revenue or costs for towing, removal, installation, or re-installation. To receive warranty service you must contact JAMES BARONE RACING to receive an RMA # (Return to Manufacturer Authorization Number) at which time you will be provided with instructions for returning the faulty product

CONTACT:

If you have questions or problems, e-mail us at jamesbaroneracing@gmail.com. Posting questions or problems in the forums or other social media outlets will only delay you from getting the correct answer or personalized attention from us.