



JAMES BARONE RACING
AFTERMARKET PARTS AND ACCESSORIES

2013-2018 Ford Focus *ST*
Valve Cover Oil Catch Can
Installation Instructions

Tooling:

- ✓ Jack , Jack Stands or ramps
- ✓ Ratchet
- ✓ Short extension
- ✓ 8mm, 10mm, 14mm 17mm Sockets
- ✓ 10mm, 11mm & 12mm wrenches
- ✓ Medium crescent wrench
- ✓ 5mm allen wrench
- ✓ Flat head screw driver
- ✓ #20 & #30 torx bits
- ✓ Teflon tape
 - You will also need a sound symposer delete kit (not Supplied)

Parts List:

- ✓ 1 fully assembled oil catch can
- ✓ 1 mounting bracket
- ✓ 2, 14" pieces of hose with connectors attached
- ✓ 3 Stainless steel hose clamps
- ✓ 1, 6mm x 1.0 x 16mm bolt
- ✓ 1, 6mm x 1.0 nut
- ✓ 20" of 3/8 drain hose with NPT fitting
- ✓ 1 quick drain valve
- ✓ 1 zip tie

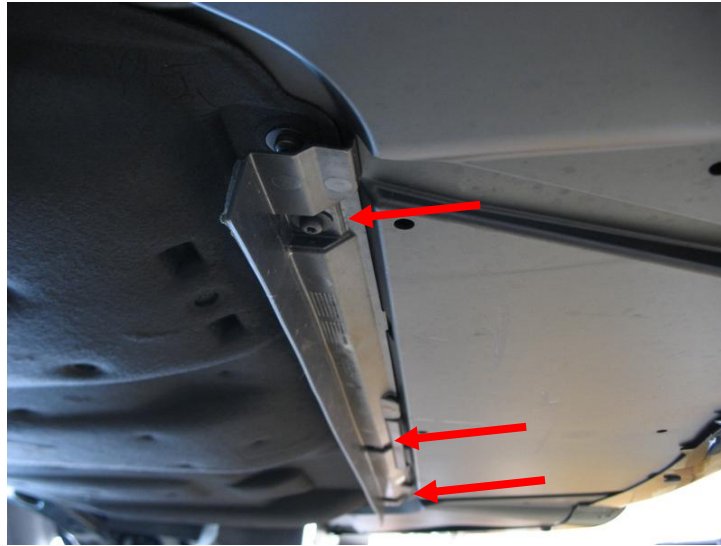
- ❖ Begin by parking on a smooth level surface with the emergency brake engaged. Jack up the front of the vehicle and position jack stands underneath both sides.



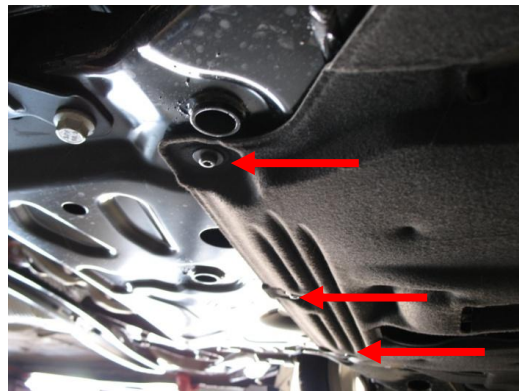
Refer to your vehicle's owner's manual for proper jack placement and supporting procedures.

Never get under a vehicle without the proper support in place.

1. Remove the front lip portion of the belly pan using the T-30 torx bit.



2. Remove the remainder of the belly pan.



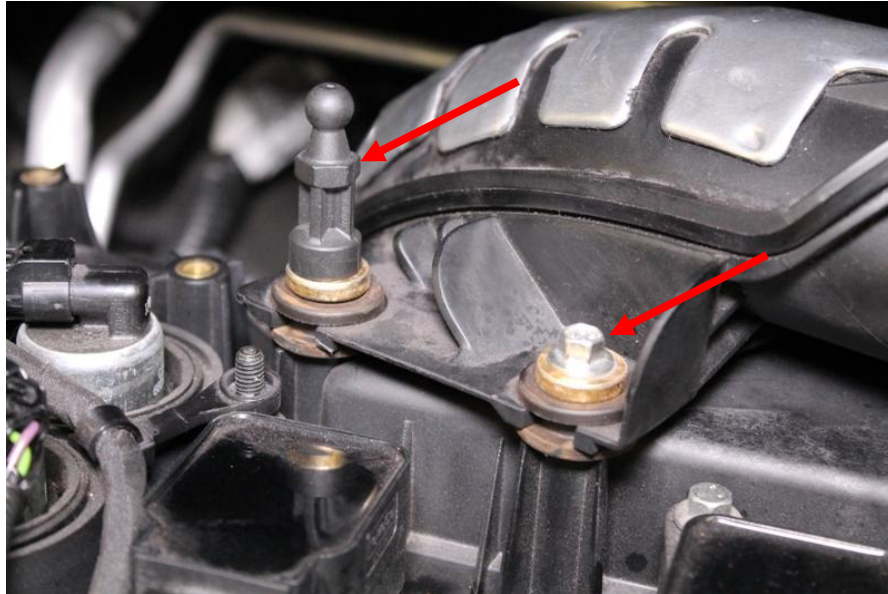
3. From the top side, remove the engine cover by pulling straight up on all four corners.



4. With an 8mm socket, remove the bolt securing the turbo inlet pipe to the vacuum pump.



- Using an 8mm socket remove the bolt securing the turbo inlet pipe to the valve cover and a 12mm wrench to remove the peg that supports the engine cover.



- With an 8mm socket, loosen the clamp securing the intake hose to the turbo inlet pipe. Remove the turbo inlet pipe from the intake hose and pivot it towards the front of the vehicle.





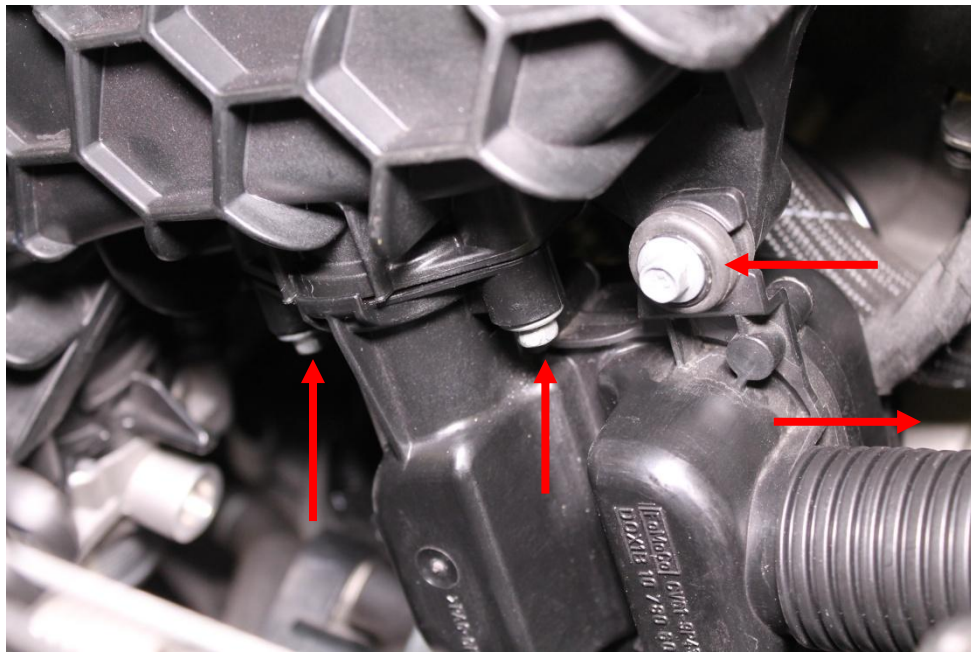
7. Apply Teflon tape to the threads of the drain valve. Attached the drain valve to the bottom of the catch can and tighten with a crescent wrench. Install the drain hose fitting into the bottom of the drain valve. This can be tightened by hand and does not need to be too tight.



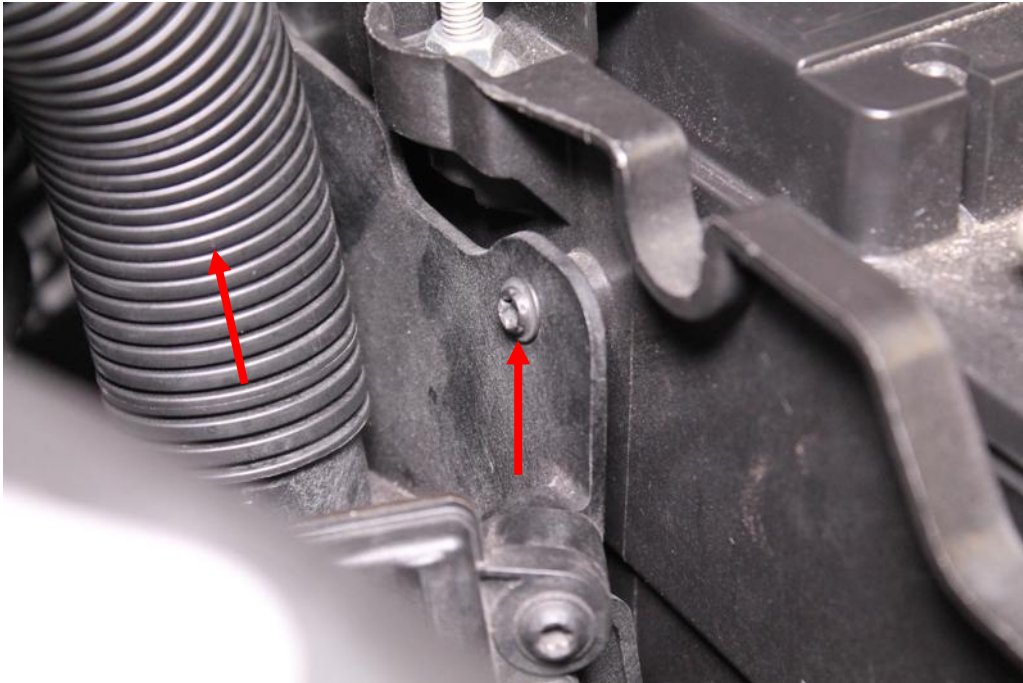
8. Apply Teflon tape to the threads of the barbed fittings. Install the barbed fittings into the IN and OUT ports of the catch can using a 14mm deep socket.



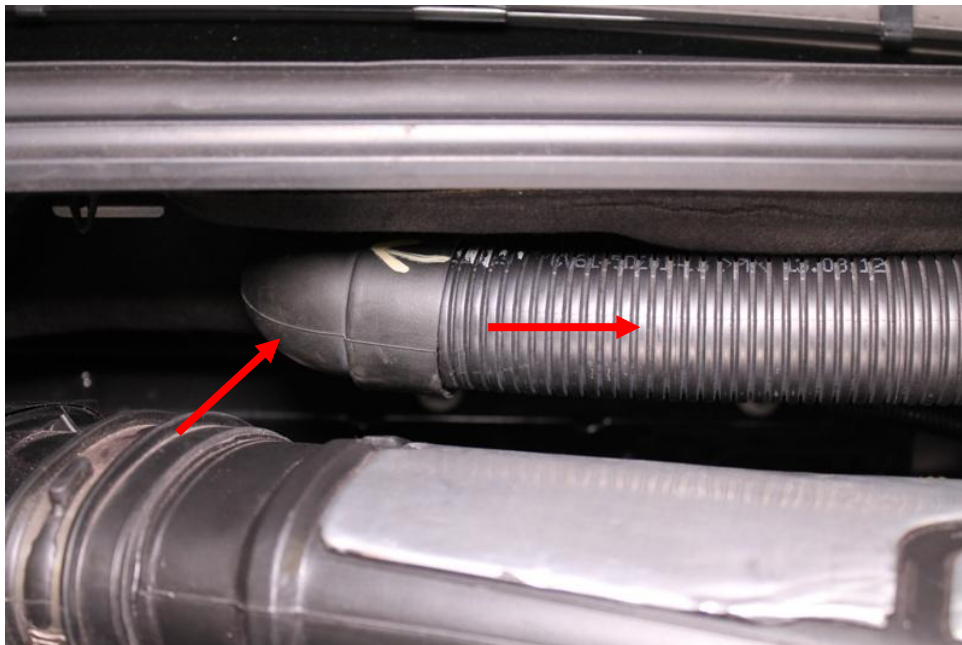
9. Using an 8mm socket, remove the 3 bolts holding the sound symposer to the intake manifold. Pull the hose off and install a symposer delete kit.



- Using a T20 torx bit, remove the screw securing the symposer valve to the battery box and pull the hose off.



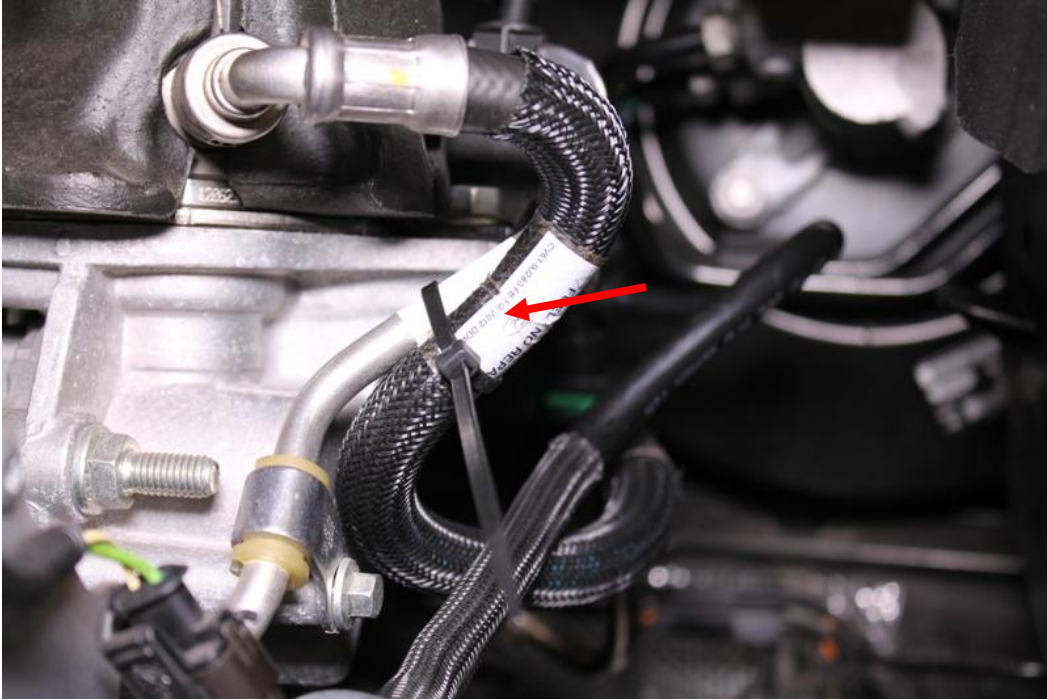
- Pull the symposer hose from the rubber boot and remove the boot from the cowl.



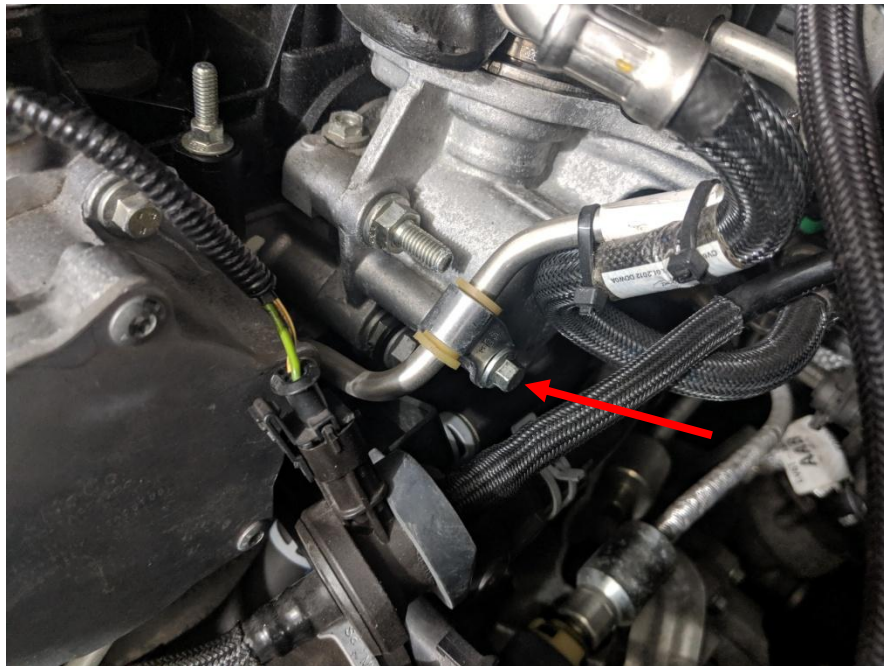
12. With the sound symposer out of the way, we need to make a little more room for the catch can. Under the brake fluid reservoir, disconnect the vacuum hose by removing the outer green clip. Then push on the end to depress the tabs and pull it straight off.



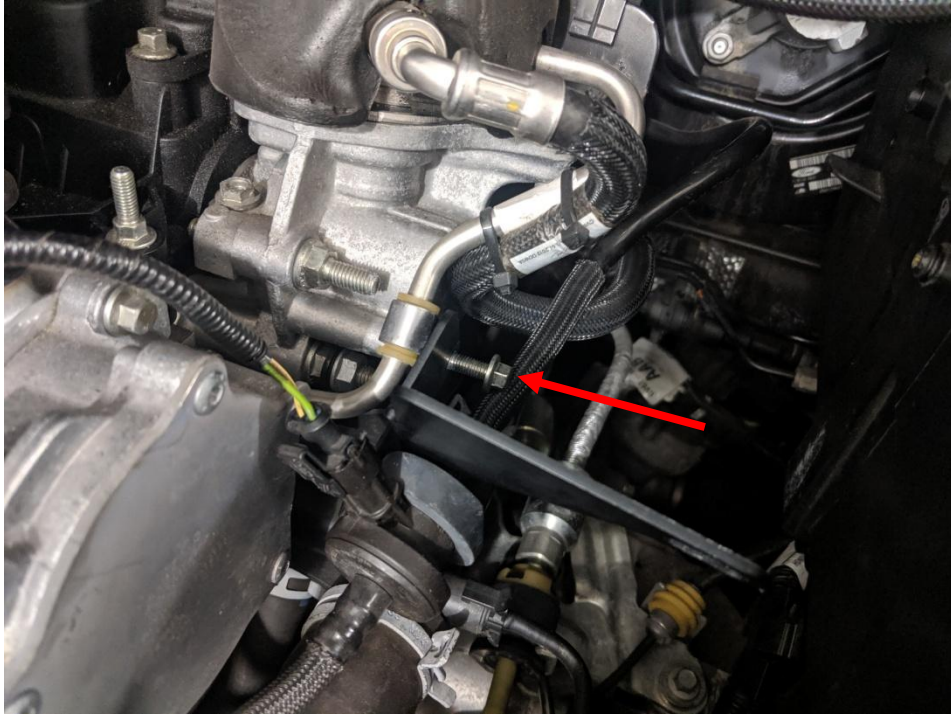
13. Now swivel the fuel line towards the passenger side and secure it to the hard line with the included zip tie. Put the green clip removed in step 16 back on the vacuum line connector and reconnect the vacuum line.



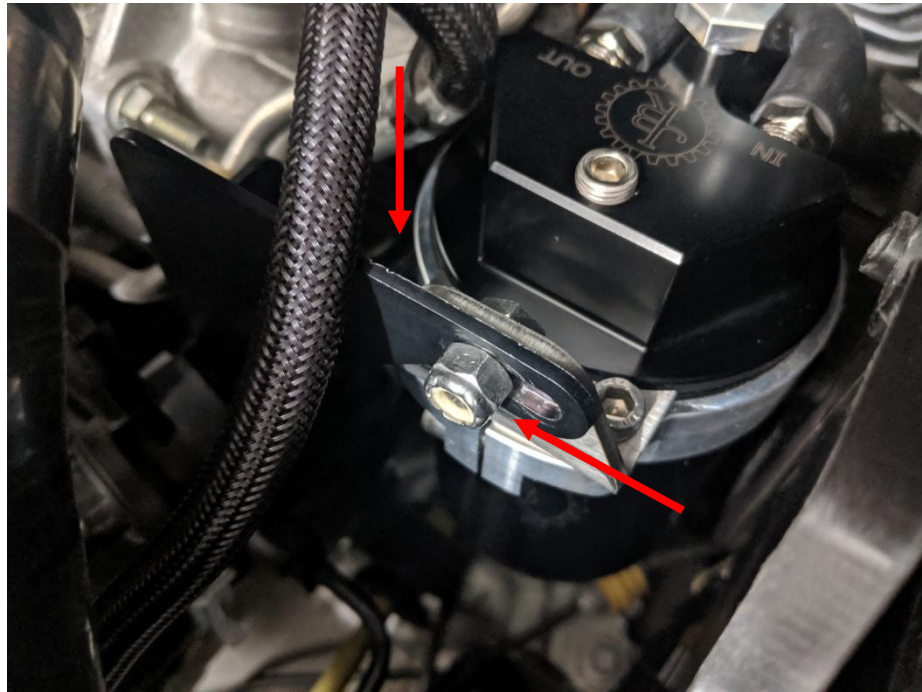
14. Attach the hose with the white nylon connector to the OUT port on the catch can. Connect the hose with the 90° connector to the IN port on the catch can. Secure both with the small hose clamps.
15. Remove the 8mm bolt in the side of the fuel pump using an 8mm socket.



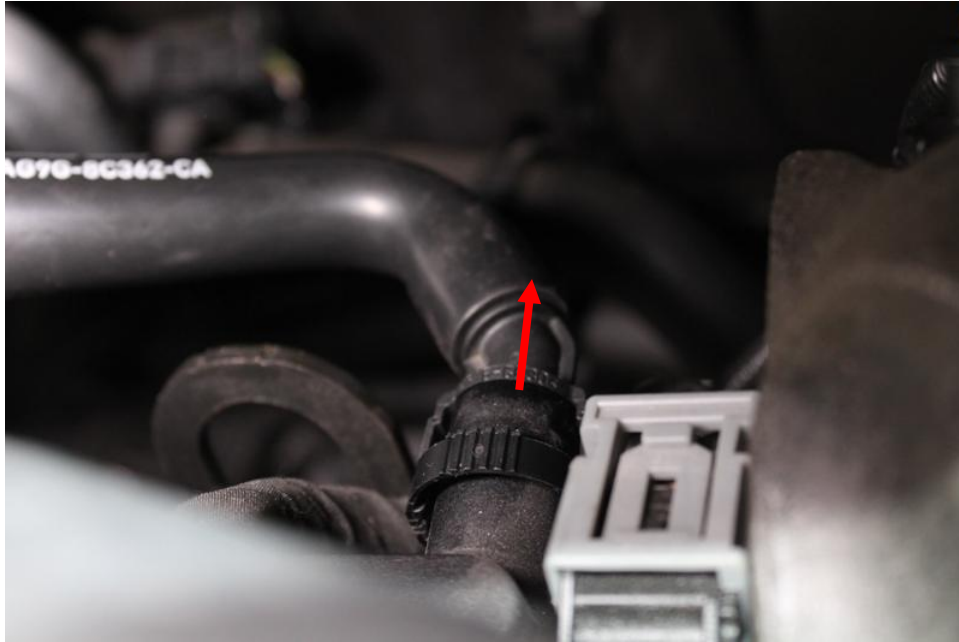
16. Install the mounting bracket included with your kit. (Be careful not to cross-thread this bolt when re-installing) Leave the bolt just a little loose.



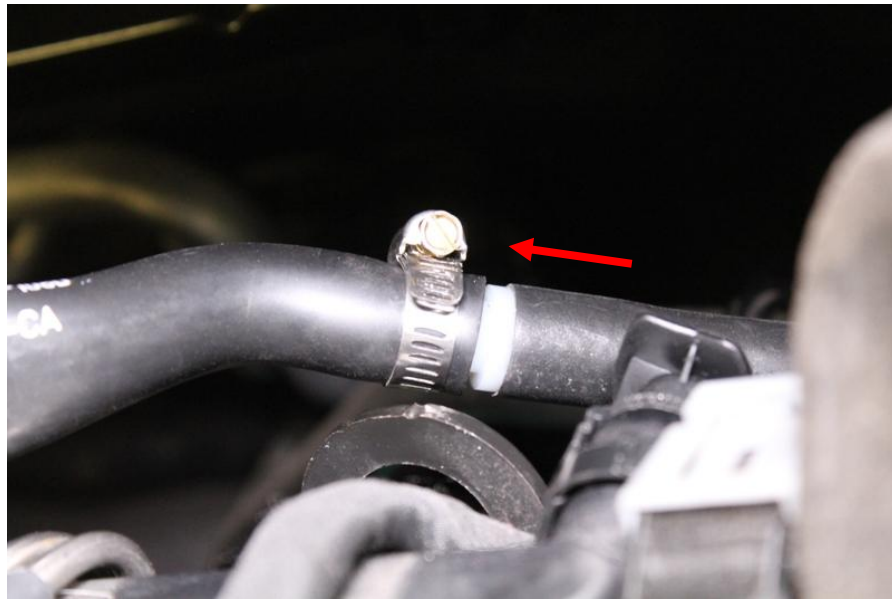
17. Feed the catch can and hose assembly in to the car beside the battery box. The drain hose will run down behind the transmission. Feed the hose with the 90° quick connector between the two brake lines coming off the brake fluid reservoir. The other hose will run below the brake lines and both will head towards the passenger side. Once the hoses are run secure the catch can assembly to the mount bracket using the 6mm bolt and nut. Level the catch can and tight the bolt in step 16 using an 8mm wrench.



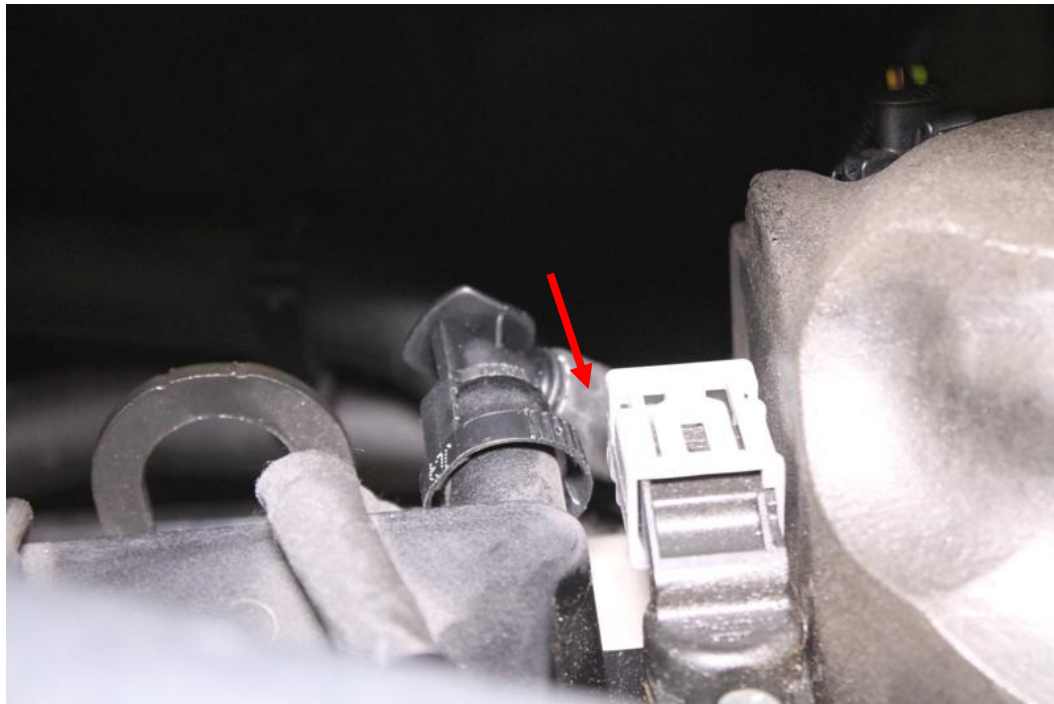
18. Remove the quick connector hose coming from the turbo inlet pipe from the back of the valve cover by squeezing the sides and pulling towards the rear of the car. Then, remove the fitting from the hose by pulling it out.



19. Connect the hose from the catch can with the barbed connector to the hose from the turbo inlet pipe and secure it with the large clamp provided and a flat head screw driver.



20. Connect the hose with the female quick connector to the back of the valve cover with the elbow of the connector pointing almost straight down.



21. From below, you'll need to make sure the drain hose is out of the way and not going to get caught up in the axel or suspension.

**Congratulations!! You've now completed the installation of
you New JBR Valve Cover Oil Catch Can Kit!!**