



## **JAMES BARONE RACING**

### **AFTERMARKET PARTS AND ACCESSORIES**

#### **Raider's Air Dam Installation Instructions 2007 – 2009 Mazdaspeed 3**

#### **What you will need:**

- Philips and flat head screw driver
- Small pic

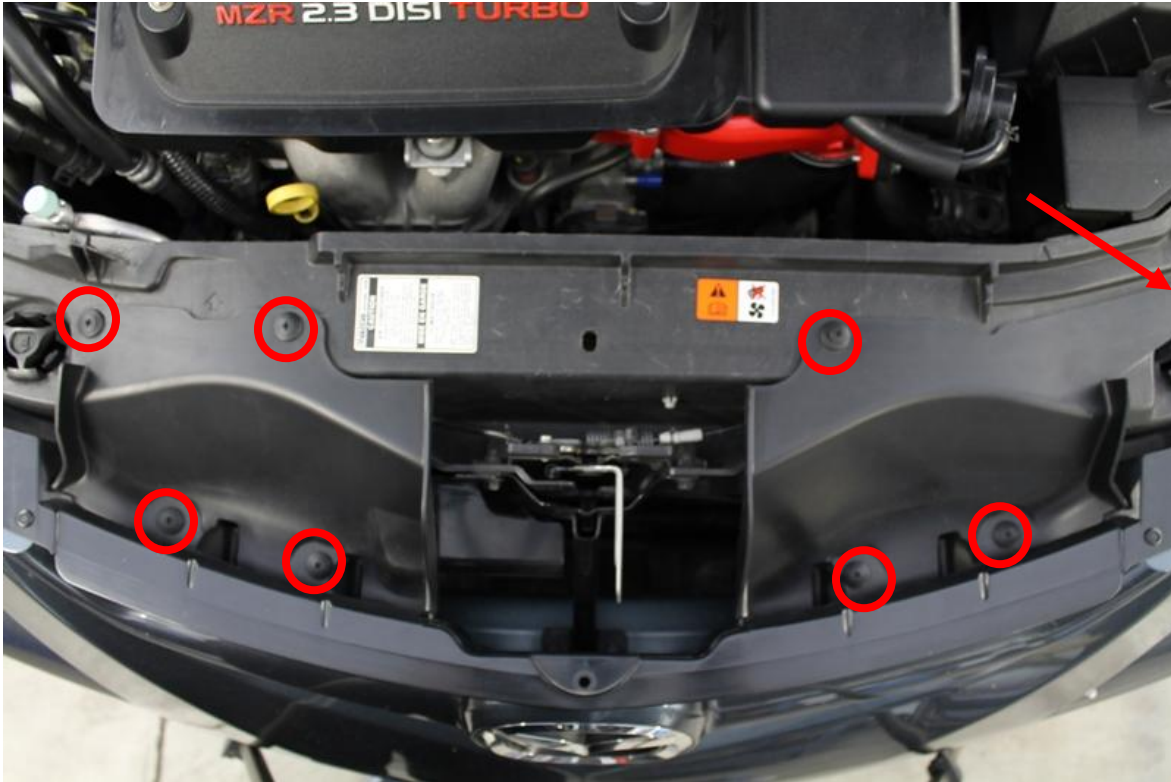
#### **Parts List:**

- 1 Air Dam
- 4 plastic push type fasteners (3 larger & 1 Small)

- Upon receiving your air dam, you should unroll it and allow it to sit for a few hours to uncurl. If any curling remains or you're too excited to wait and want to install it right away, roll it up tight in the opposite direction, hold it for a minute or two and unroll it again. Repeat if necessary.

Scratches and inclusions, some worse than others, are a normal and unavoidable aspect of the manufacturing process. Most can only be seen in direct light and will never be seen when the product is installed.

1. Start by removing the 8 philips head fasteners that secure the factory top mount intercooler air diverters.

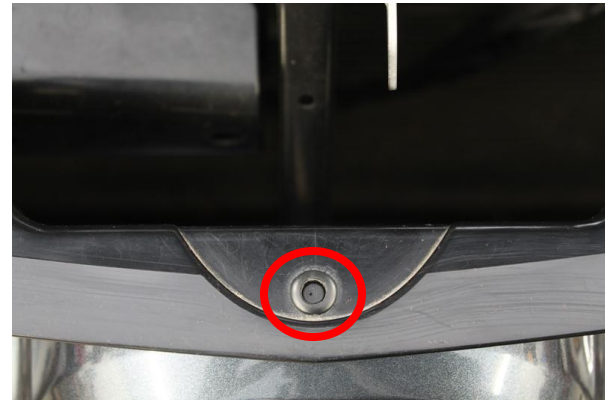


2. Remove the 2 philips head screws on each side.



3. Remove the center fastener located in front of the hood latch.

- To do this, use a pick to push IN the center portion of the fastener then, use a flat head under the outer head to remove it.



4. Lay the Air Dam in place and loosely install the two Philips head screws removed in step 2.



5. Using the 3 larger plastic push type fasteners included with your kit, secure the air dam closest to the engine. Use a Philips head screw driver to carefully tighten the fastener.

➤ Note that the 3 holes in the car are oval. You must orient the ears of the fastener perpendicular to the oval in order for the faster to bite and hold the air dam in place.



6. Next, install the remaining small plastic fastener in the front center hole.
  - To do this, the head of the fastener must be thread in to the fastener before installing it. Carefully push the fastener through the air damn and in to the hole in the car. Do this slowly and only push it in far enough to secure the air damn. Too far and it will cause the air damn to curl. If you go too far, carefully use a flat head screw driver under the air damn to back it out some.



7. Lastly, tighten the two philips head screws installed in step 4.

**Congratulations!!**  
You've now completed the installation of your new Air Damn

## **SHIPPING**

All orders are carefully inspected and packaged prior to shipment. The recipient must inspect all shipments for damage and report any damage to the carrier and JAMES BARONE RACING immediately. JAMES BARONE RACING is not responsible for damage that occurs during shipping.

## **RETURNS:**

All sales are final. JAMES BARONE RACING will only accept returns in the event of a manufacturer's defect. Defective items will be exchanged for the identical item or repaired at our discretion. Return shipping costs are the responsibility of the purchaser. An RMA # (Return to Manufacturer Authorization Number) must accompany all returns. In rare cases when a return is accepted, a 15% restocking fee will be deducted from the refund or credit. Shipping charges are non-refundable. No returns or exchanges will be accepted after 30 days.

## **DISCLAIMERS:**

Failure to carefully follow the installation instructions for your JAMES BARONE RACING product could result in significant property damage, personal injury, injury to others or even death. Please take the time to read and thoroughly understand the instructions prior to installation. The instructions are as accurate as possible and may vary slightly from model year to model year. Professional installation is recommended.

Neither JAMES BARONE RACING nor any of its employees, officers, directors, or shareholders will accept responsibility for improper use or installation of our products. JAMES BARONE RACING is not responsible for the misuse, incorrect installation, or failure of any product we sell. Under no circumstances, including but not limited to negligence, will JAMES BARONE RACING be liable for special or consequential damages that result from the use or inability to use our products. JAMES BARONE RACING does not assume responsibility for any damage to the user, driver, passenger or vehicle resulting from the operation of a JAMES BARONE RACING product. PLEASE DRIVE RESPONSIBLY.

## **WARRANTY:**

All JAMES BARONE RACING products carry a lifetime warranty to the original purchaser. Warranty is non-transferable. Warranty does not cover damage or failure caused by abuse, misuse, faulty installation or repairs not conducted by JAMES BARONE RACING. JAMES BARONE RACING is not liable for consequential damages arising from the use of our products or any indirect damages resulting in the loss of property, revenue or costs for towing, removal, installation, or re-installation. To receive warranty service you must contact JAMES BARONE RACING to receive an RMA # (Return to Manufacturer Authorization Number) at which time you will be provided with instructions for returning the faulty product

## **CONTACT:**

If you have questions or problems, e-mail us at [jamesbaroneracing@gmail.com](mailto:jamesbaroneracing@gmail.com). Posting questions or problems in the forums or other social media outlets will only delay you from getting the correct answer or personalized attention from us.