



## **JAMES BARONE RACING AFTERMARKET PARTS AND ACCESSORIES**

### **2007 – 2009 MAZDASPEED 3 Short Throw Shifter Installation Instructions**

What you will need:

- Ratchet wrench
- 6" socket extension
- 10mm socket
- Window Trim removal tool or needle nose pliers
- Pick or tiny flat head screw driver
- T20 torx bit
- 3 paper clips
- Lithium grease

1. Remove the shift knob by turning it counter clockwise.



2. Loosen the shift boot portion of the console by crabbing it under the edge of the silver trim ring and pulling up.



3. Fully engage the emergency brake, open the lid of the console and pull up on the rear portion of the cup holder section of the console.



4. Remove the cup holder and shift boot portion of the console together or separately if they've come apart in two pieces.



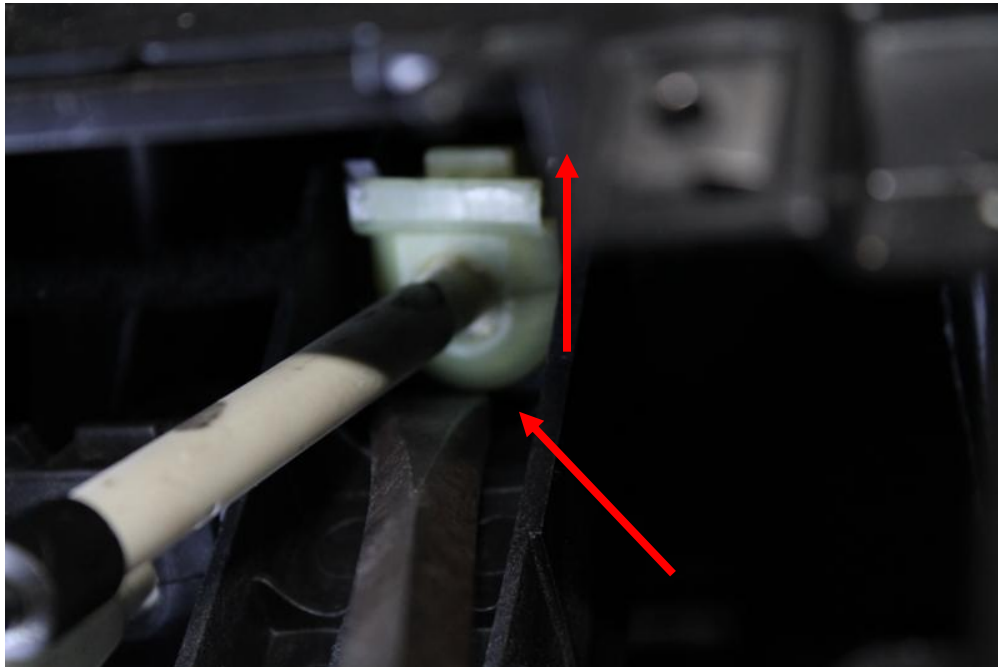
5. Using a window molding removal tool, or a pair of needle nose pliers, or two flat head screw drivers, carefully pop of the shift cable shown below.



- Using a window molding removal tool, or a pair of needle nose pliers, or two flat head screw drivers, carefully pop of the shift cable shown below.



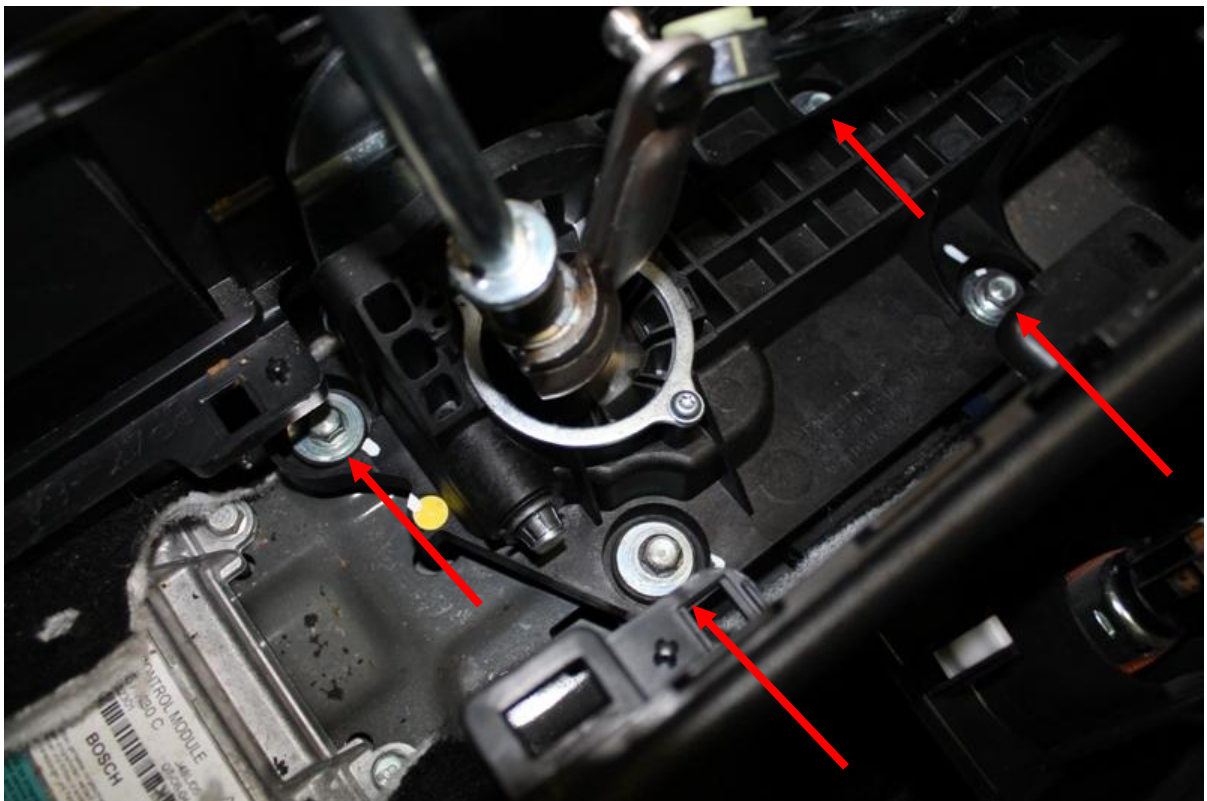
- Using a large screw driver under the lip of the cable attachment clip, pop the right cable attachment clip up to remove it from the shifter base.



- Using a large screw driver under the lip of the cable attachment clip, pop the left cable attachment clip up to remove it from the shifter base.



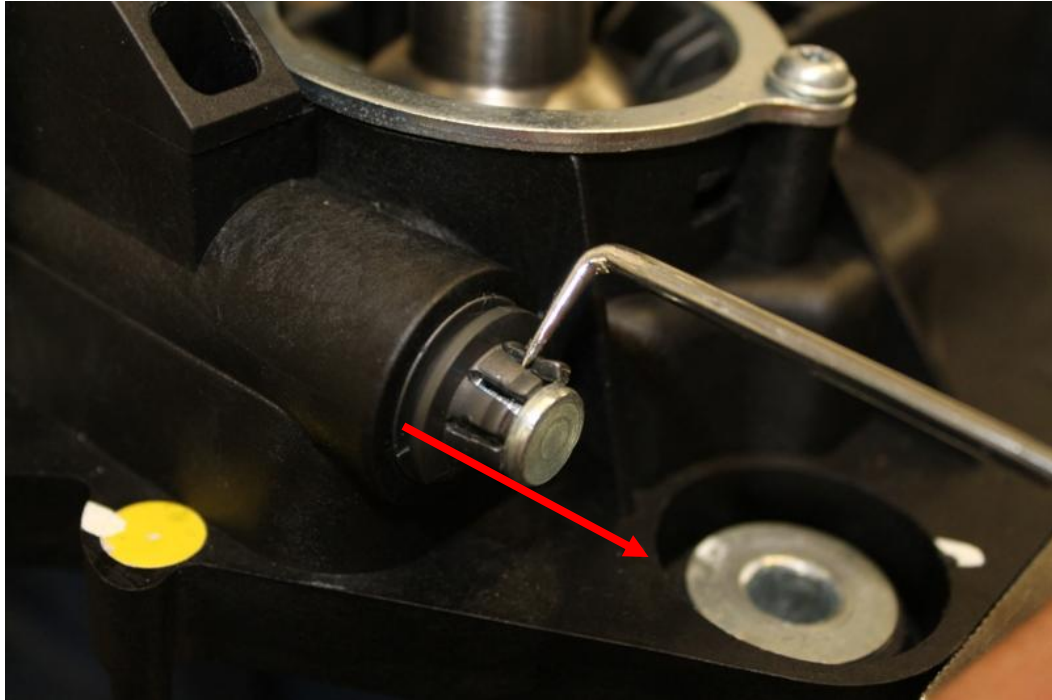
- Using a 10mm socket remove the 4 bolts that secure the shifter base to the floor of the car. Remove the entire shifter assembly from the car.



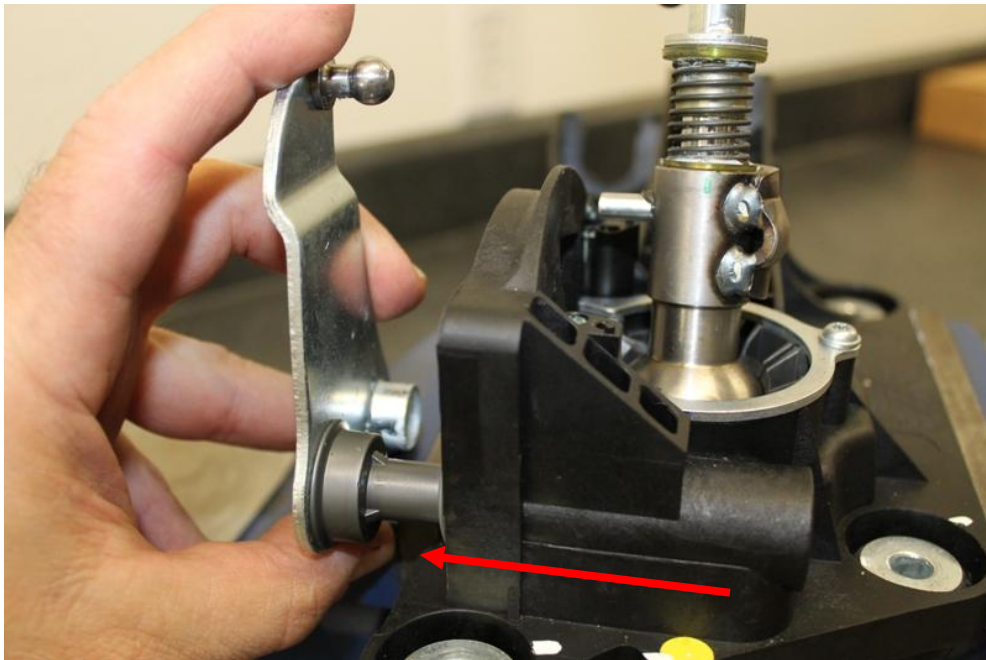
Copyright © 2014 James Barone Racing LLC. Any unauthorized reproduction or publication of this document is a strictly prohibited without the written consent from James Barone Racing.

- If possible clamp the shifter base in a vice or to a bench to make the next several steps easier. A second set of hands can help too.

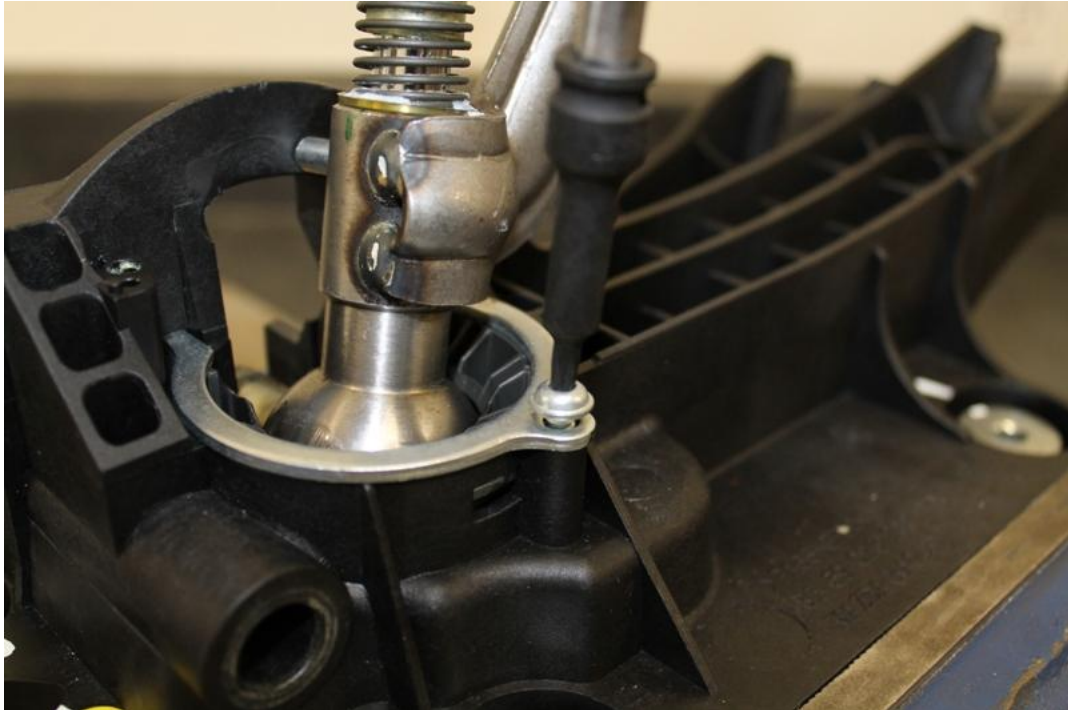
10. Using a pick or tiny screw driver, very carefully lift each finger of the retainer clip shown below to pop each finger up. Once they are all popped up pull the retainer off.



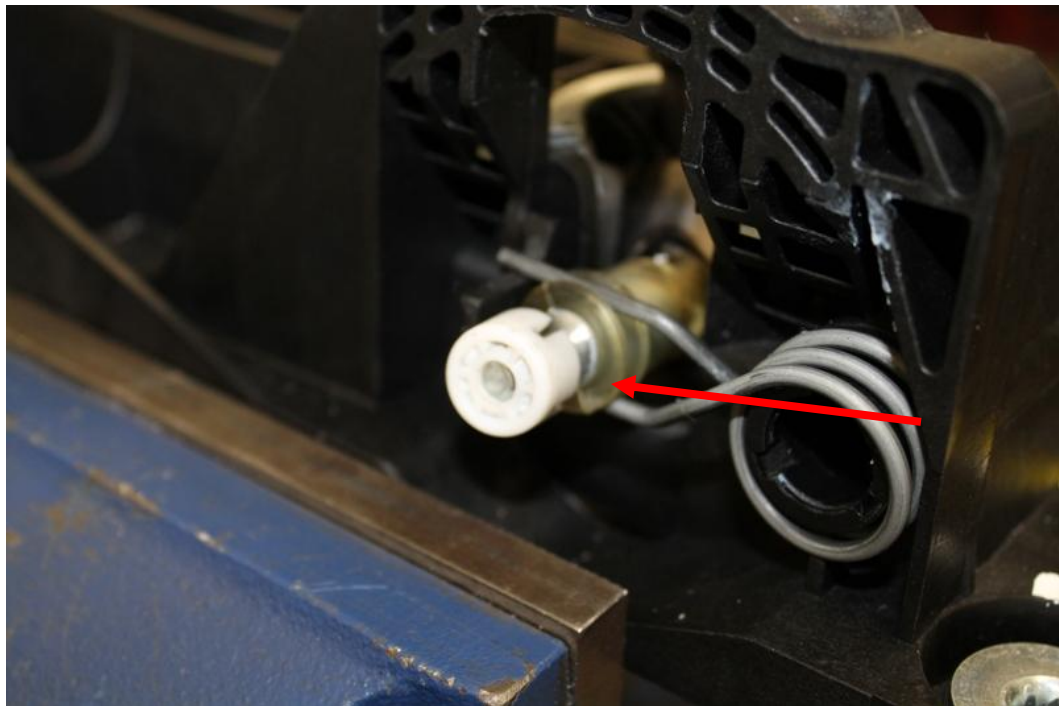
11. Now slide the cable arm out of the base of the shifter.



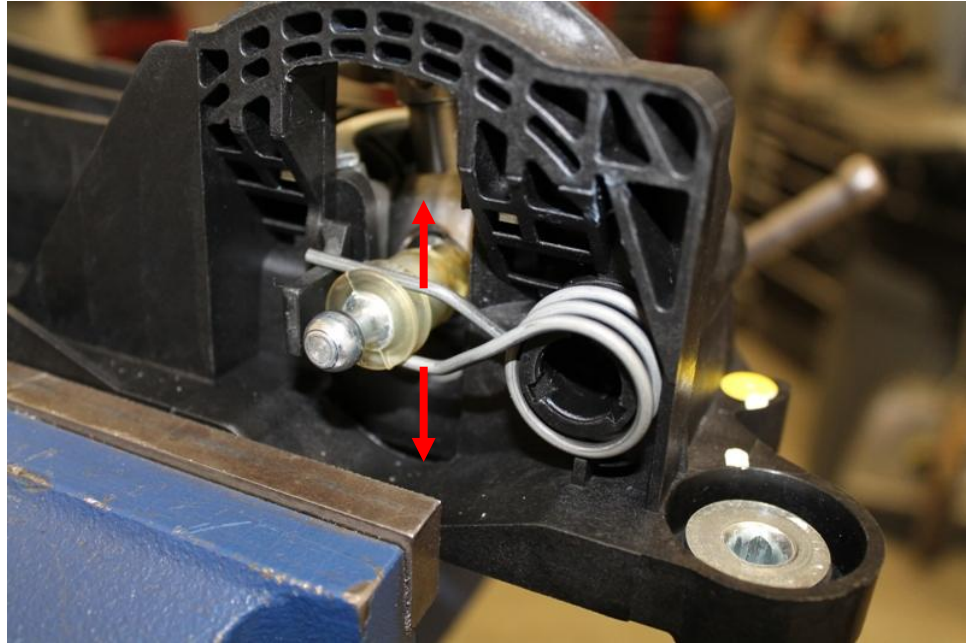
12. Using a T20 torx bit remove the screw holding the shifter retainer, remove the retainer.



13. Pop the white cap off the ball shown below.

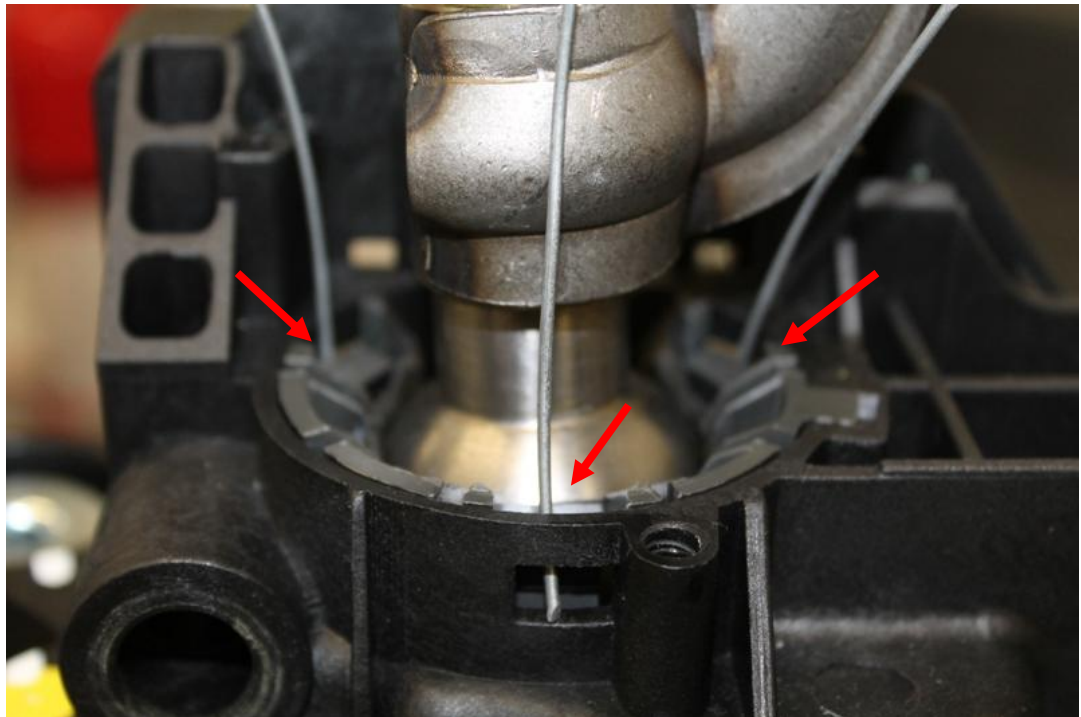


14. Remove the spring by separating the two prongs and pulling towards you.



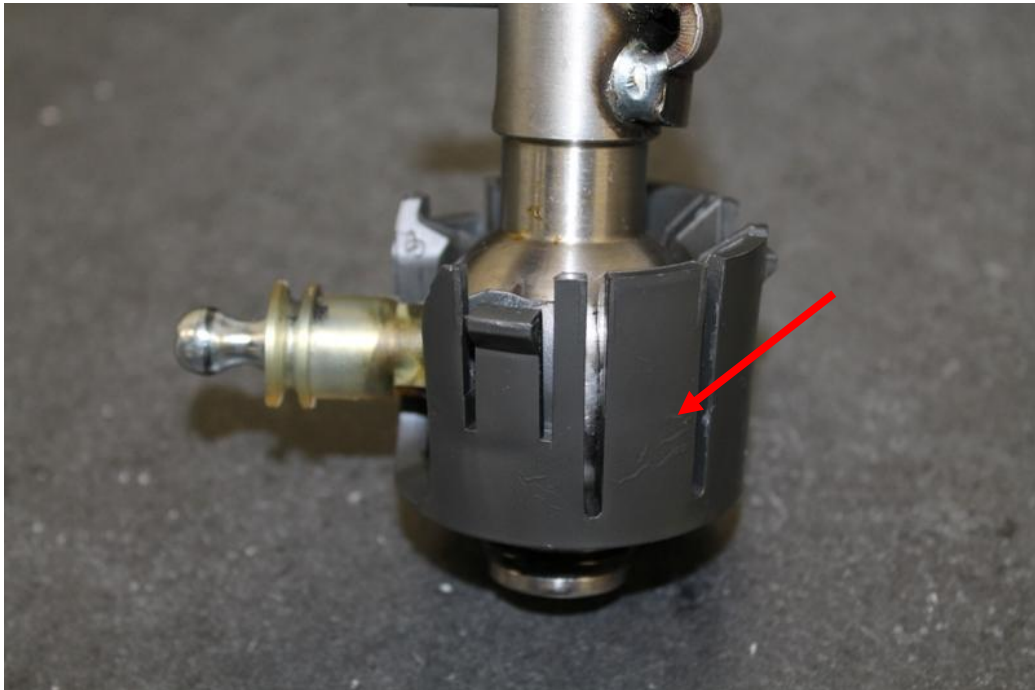
15. Next, using a pick or tiny flat head screw driver depress the 3 tabs holding the ball of the shifter in place.

➤ Use 3 paper clips or small pieces of tie wire to hold the tabs out.





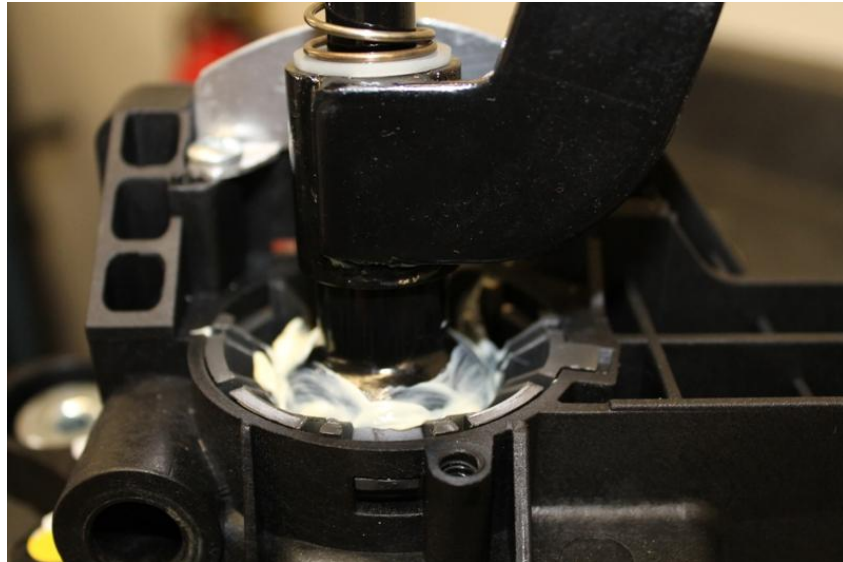
16. Once the tabs are depressed and the wire or paper clips are in place holding the tabs out, pull straight up on the shifter to remove it from the shifter base. Now remove the cup from the bottom of the OEM shifter.



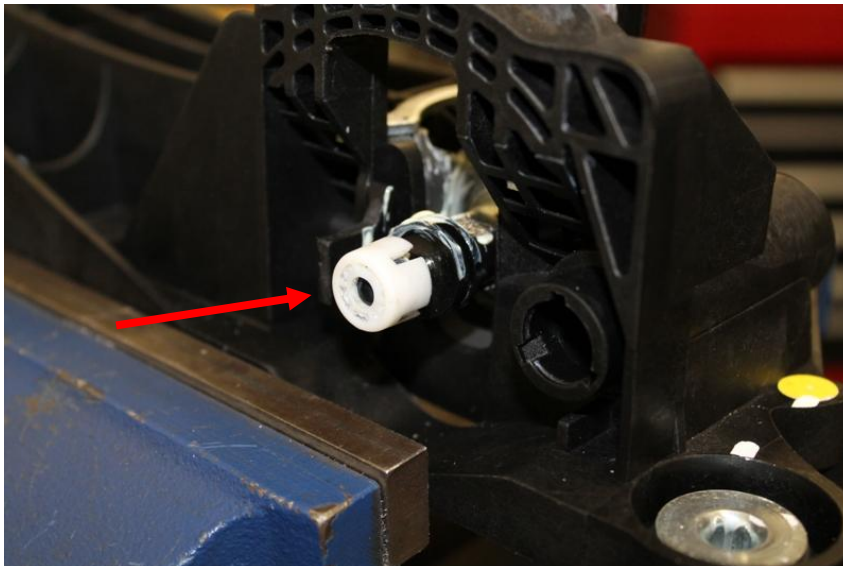
17. Clean the shifter cup of any old grease a debris as well as the shifter socket in the base of the shifter. Apply lithium grease liberally to the ball of your new short shifter, in the end of the ball, in the cup and in the socket of the base.



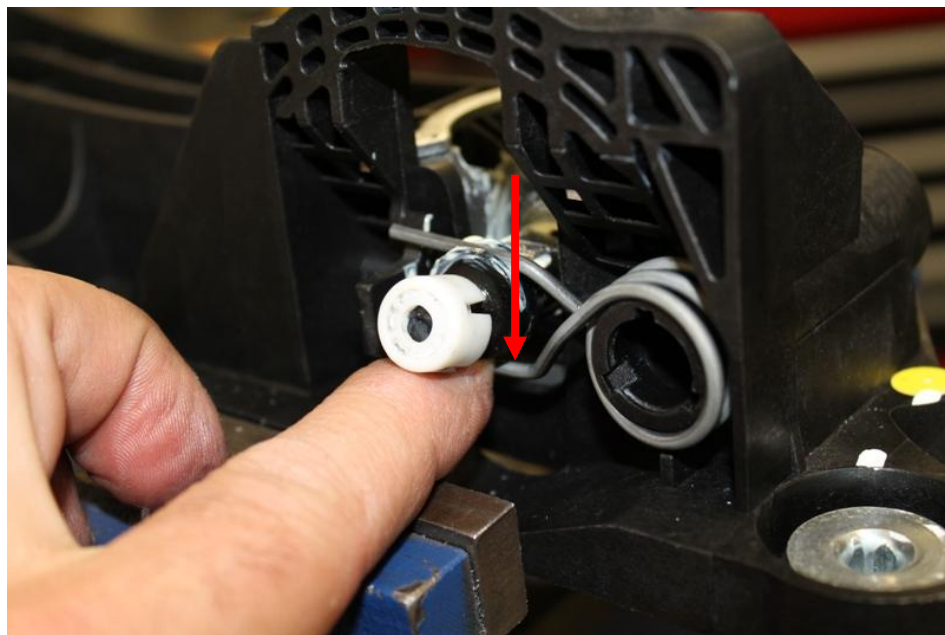
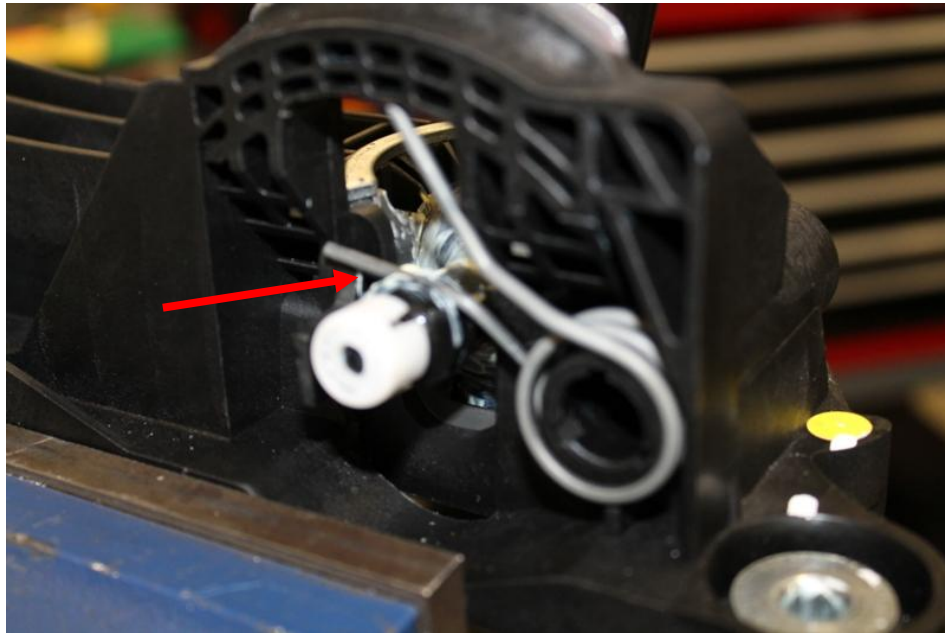
18. Place the cup on the end of your new short shifter. Line up the tabs of the cup with the base and reinsert the shifter in to the base until you hear it snap in.



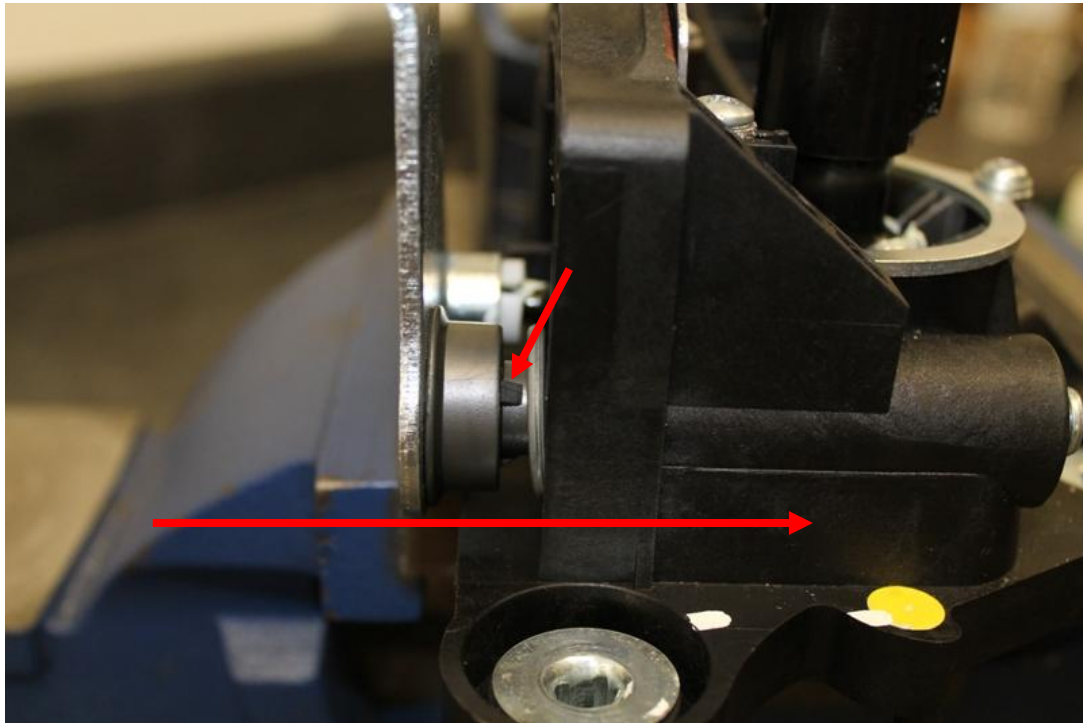
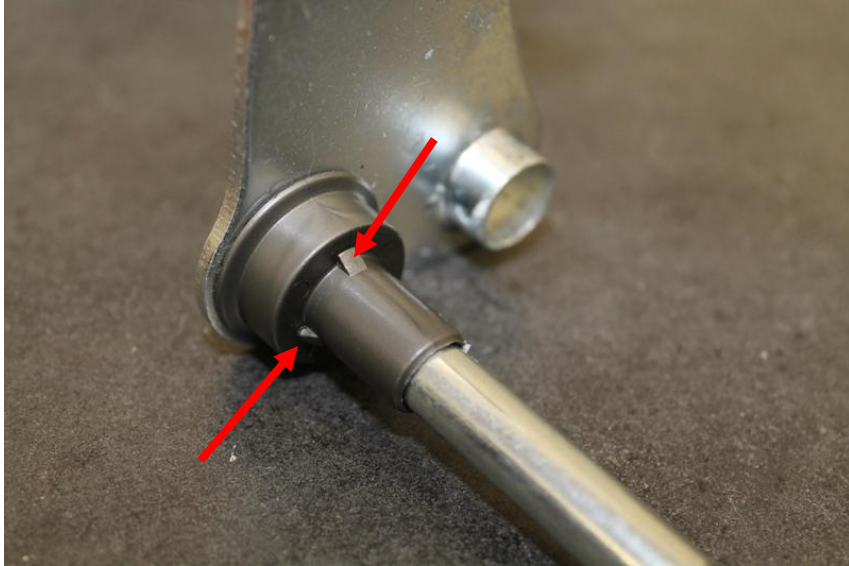
19. Pop the white cap removed in step 13 back on the ball.



20. Replace the spring removed in step 14 one prong at a time. Put the bottom prong in the top groove of the shifter peg. Then, push the bottom prong down and over the shifter peg and in to the groove.



21. Put the cable arm back through the base of the shifter and make sure the points on the arm properly index with the base.



22. Pop the retainer clip removed in step 10 until all the fingers are engaged. Now, reinstall the shifter retainer removed in step 12.



23. Next reinstall the entire shifter back in to the vehicle and perform steps 1 through 9 in the reverse order.

**Congratulations!! You've now completed the installation of  
your new Short Shifter**

## Thank you for purchasing from James Barone Racing!

### **SHIPPING**

All orders are carefully inspected and packaged prior to shipment. The recipient must inspect all shipments for damage and report any damage to the carrier and JAMES BARONE RACING immediately. JAMES BARONE RACING is not responsible for damage that occurs during shipping.

### **RETURNS:**

All sales are final. JAMES BARONE RACING will only accept returns in the event of a manufacturer's defect. Defective items will be exchanged for the identical item or repaired at our discretion. Return shipping costs are the responsibility of the purchaser. An RMA # (Return to Manufacturer Authorization Number) must accompany all returns. In rare cases when a return is accepted, a 15% restocking fee will be deducted from the refund or credit. Shipping charges are non-refundable. No returns or exchanges will be accepted after 30 days.

### **DISCLAIMERS:**

Failure to carefully follow the installation instructions for your JAMES BARONE RACING product could result in significant property damage, personal injury, injury to others or even death. Please take the time to read and thoroughly understand the instructions prior to installation. The instructions are as accurate as possible and may vary slightly from model year to model year. Professional installation is recommended.

Neither JAMES BARONE RACING nor any of its employees, officers, directors, or shareholders will accept responsibility for improper use or installation of our products. JAMES BARONE RACING is not responsible for the misuse, incorrect installation, or failure of any product we sell. Under no circumstances, including but not limited to negligence, will JAMES BARONE RACING be liable for special or consequential damages that result from the use or inability to use our products. JAMES BARONE RACING does not assume responsibility for any damage to the user, driver, passenger or vehicle resulting from the operation of a JAMES BARONE RACING product. PLEASE DRIVE RESPONSIBLY.

### **WARRANTY:**

All JAMES BARONE RACING products carry a lifetime warranty to the original purchaser. Warranty is non-transferable. Supporting components, manufactured by companies other than James Barone Racing, carry the manufacturer's warranty. Warranty does not cover damage to coatings caused by exposure to the elements. Warranty does not cover damage or failure caused by abuse, misuse, faulty installation or repairs not conducted by JAMES BARONE RACING. JAMES BARONE RACING is not liable for consequential damages arising from the use of our products or any indirect damages resulting in the loss of property, revenue or costs for towing, removal, installation, or re-installation. To receive warranty service you must contact JAMES BARONE RACING to receive an RMA # (Return to Manufacturer Authorization Number) at which time you will be provided with instructions for returning the faulty product

### **CONTACT:**

If you have questions or problems, e-mail us at [jamesbaroneracing@gmail.com](mailto:jamesbaroneracing@gmail.com). Posting questions or problems in the forums or other social media outlets will only delay you from getting the correct answer or personalized attention from us.

Copyright © 2014 James Barone Racing LLC. Any unauthorized reproduction or publication of this document is a strictly prohibited without the written consent from James Barone Racing.

