



JAMES BARONE RACING
AFTERMARKET PARTS AND ACCESSORIES

JBR 2007 – 2009 MAZDASPEED 3
TR8 Intercooler Mounting Bracket Kit Installation Instructions

Tooling:

- Jack, Jack Stands, Ramps or a Lift
- Ratchet wrench
- 6" socket extension
- 10mm and 12mm sockets
- 10mm and 12mm wrenches
- Philips head screw driver
- Drill and 3/16" drill bit

Parts List:

- 2 – 6mm – 1.0 Nylon Insert Hex Nut Stainless
- 2 – 6mm – Flat Washers Stainless
- 2 – 8mm – 8mm x 1.25 x 20mm Tap Bolts Stainless
- 2 – 8mm – Lock Washers Stainless
- 2 – Core Mounting Angle Brackets
- 1 – Driver's side power steering Angle Bracket
- 1 – Passenger Side Power Steering Angle Bracket

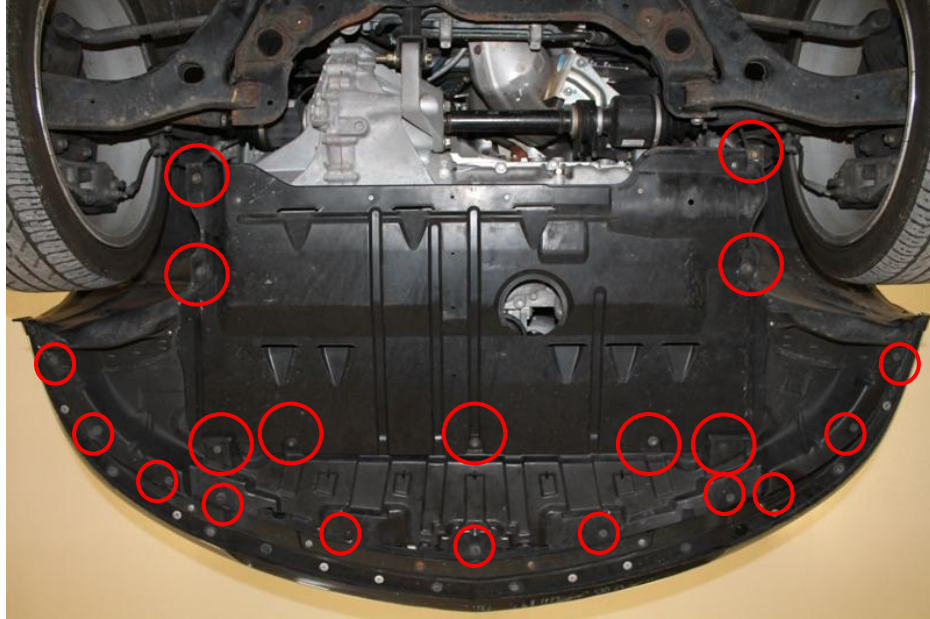
1. Begin by parking on a smooth level surface with the emergency brake engaged. Jack up the front of the vehicle and position jack stands underneath both sides.



Refer to you vehicles owner's manual for proper jack placement and supporting procedures.

Never get under a vehicle without the proper support in place.

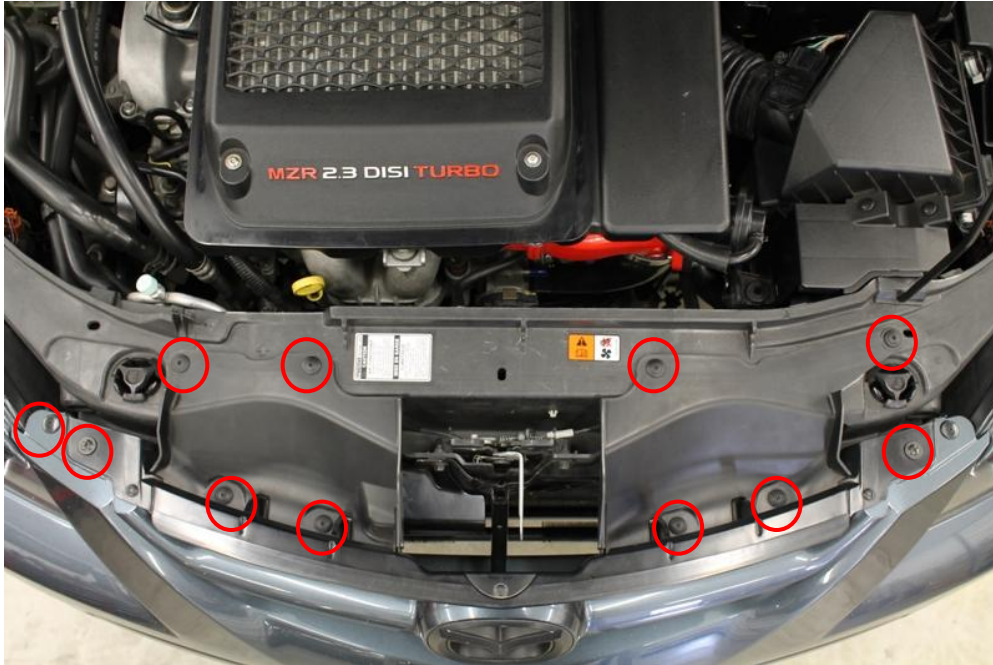
2. Remove the belly pan and lower radiator cover using a 10mm socket and a philips head screw driver.



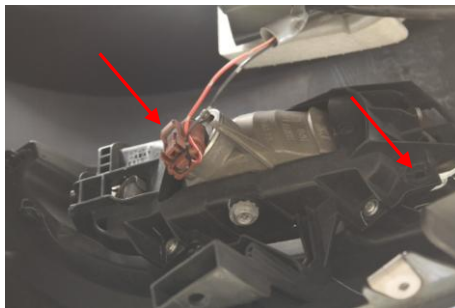
3. Using a philips head screw driver remove the two plastic fasteners and the screw located behind the fender liner. Perform this step on both the driver's side and passenger side fender liner.



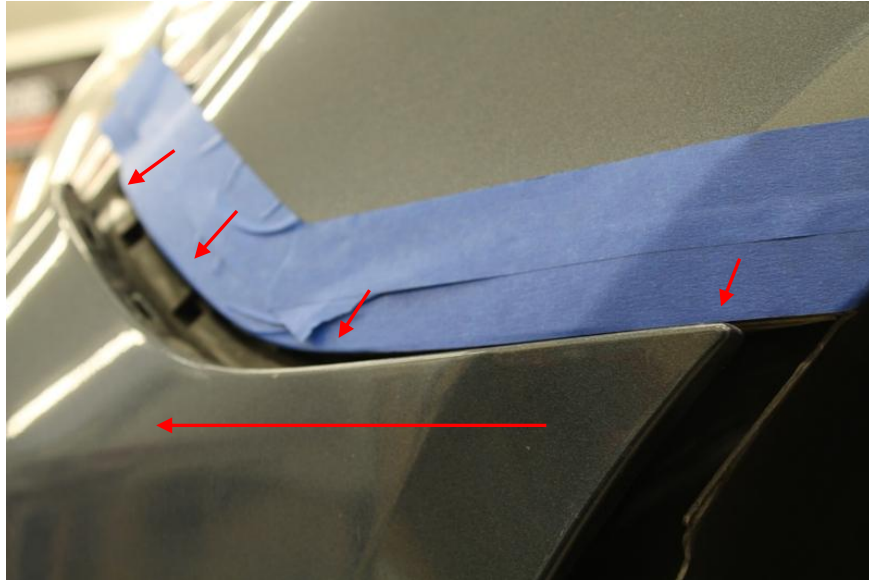
4. Remove two philips head bolts and all push pins securing the top portion of the bumper cover.



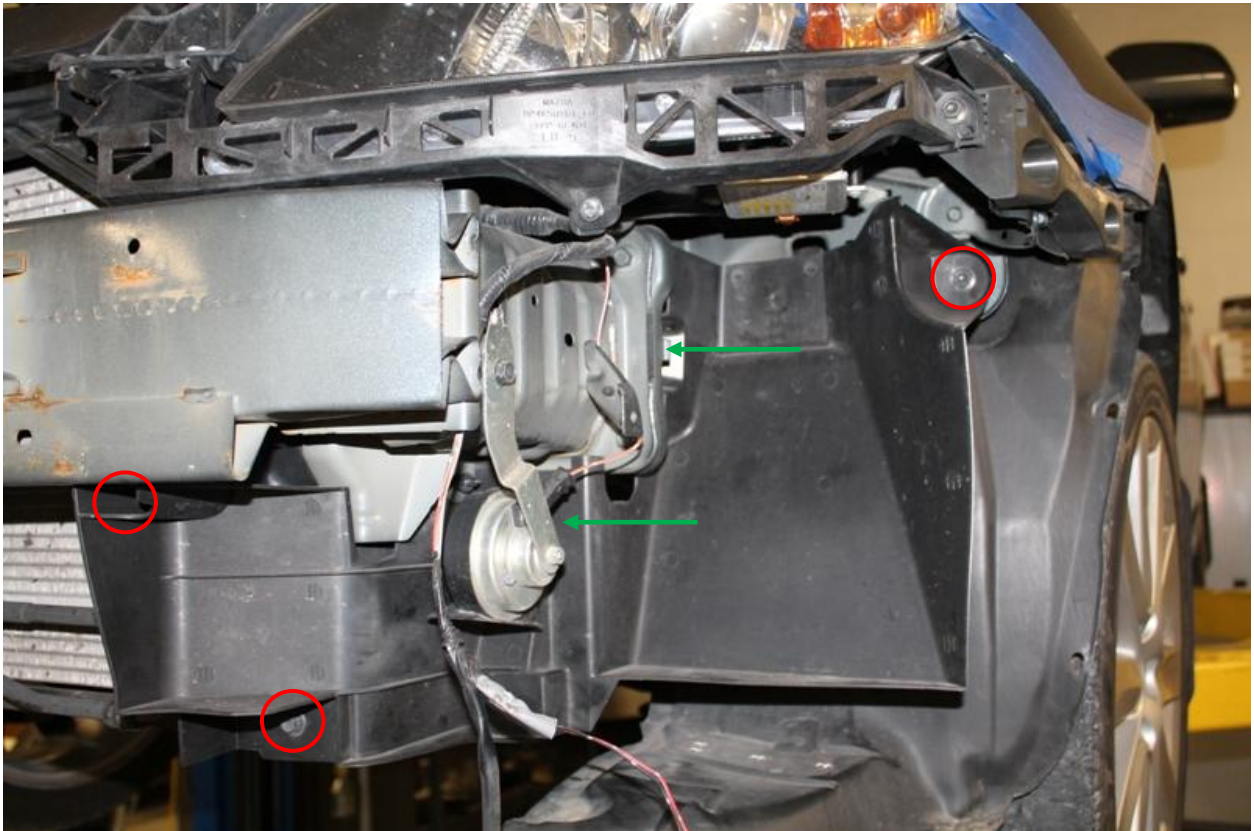
5. Remove the wiring connector from each fog light and the strap securing the harness to the light fixture.
6. Remove the 2 clips securing the wiring harness to the bumper.
7. Remove the philips head screw securing the ambient temperature sensor bracket to the bumper.



8. Unsnap the bumper cover out from under the fender on each side of the car. Once each side of the bumper is detached from the fender, reach between the grill and radiator and unclip the bumper from the top of the OEM crash bar. There are two clips, one on each side of the hood latch.



9. Using a 10mm socket remove the 3, bolts securing the radiator ducting on the driver's side.
10. Remove the 2, plastic push pins and remove the entire ducting assembly from the car.



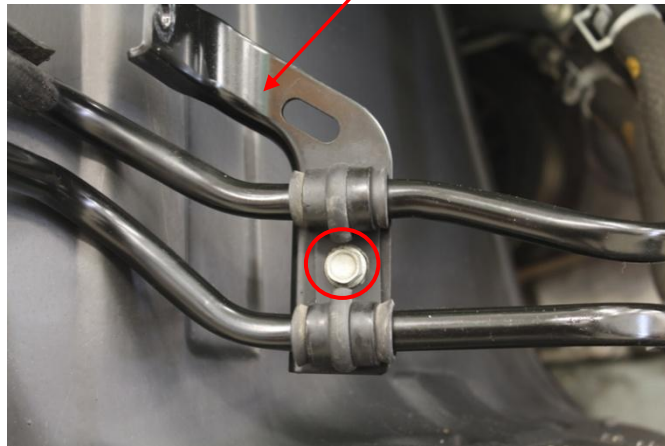
11. Remove the 2, 10mm bolts securing the passenger side radiator ducting.



12. Using a 10mm socket, remove the passenger and driver's side power steering cooler mounting brackets.



13. Using a 10mm socket, remove the passenger side bracket from the power steering cooler.



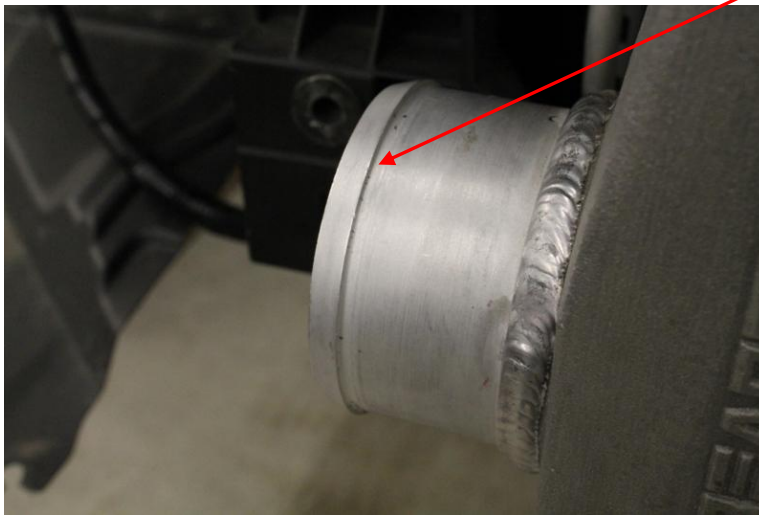
14. Next, install the 2 intercooler mounting brackets included with your kit using a 10mm socket and 2 of the bolts removed from the radiator ducting in step 11. Level the brackets, center them in the holes and tighten; this should be good for now.

➤ The intercooler mounting brackets are identical and measure 3" x 3".

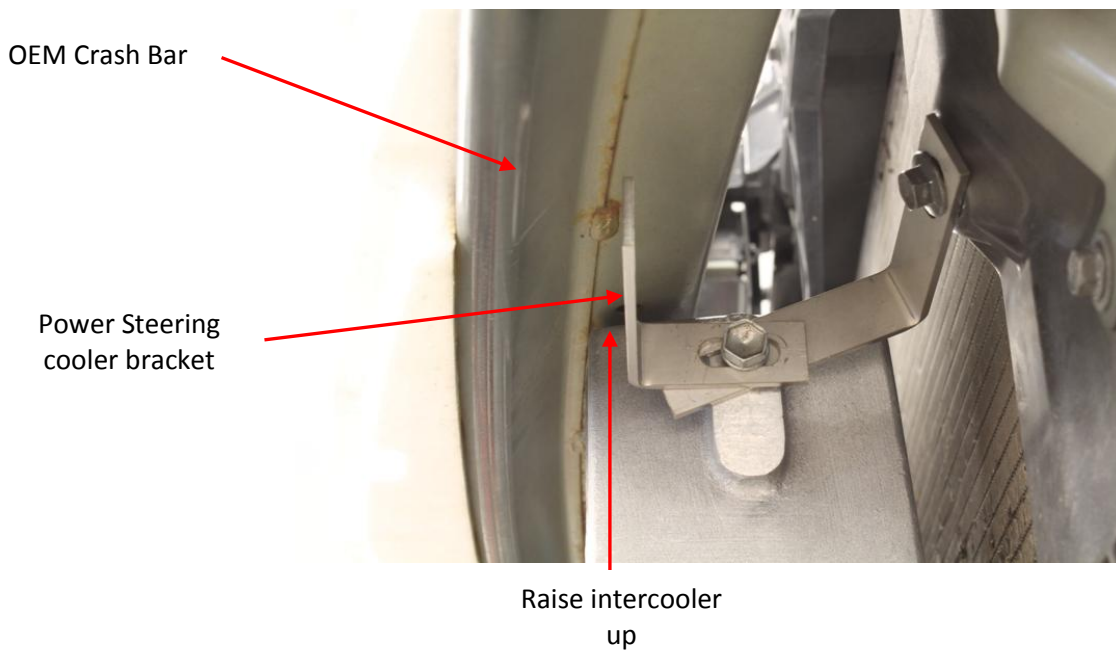


WARNING

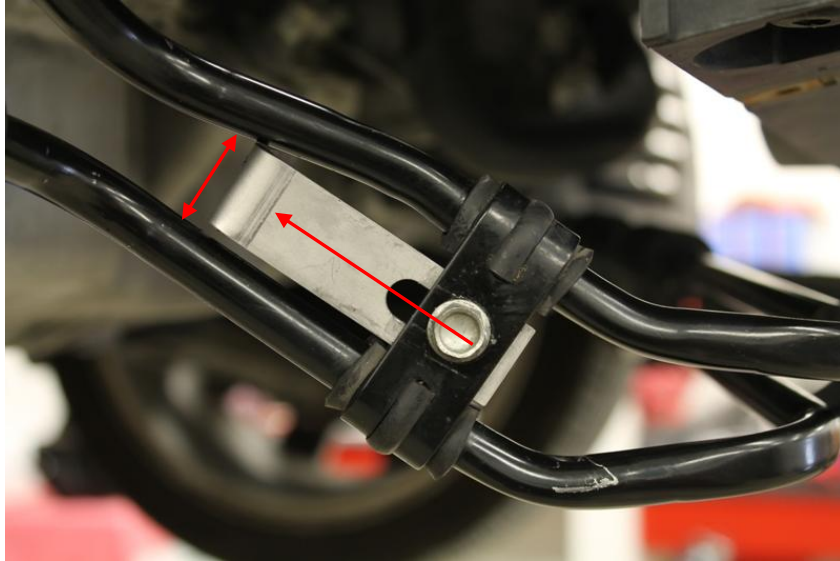
The inlet and outlet of the TR8 Cores we installed had very, very sharp bead rolls machined in to them. These **will cut** the inner layers of the silicone hoses if this is not addressed. Use a file to soften the inner edge of the bead roll.



15. Mount the intercooler on to the passenger side mount bracket first using 1, 8mm x 1.25 x 20mm bolt and 1, 8mm lock washer provided with your bracket kit.
16. Next, to mount the driver's side of the intercooler, place the short leg of the driver's side power steering cooler bracket over the intercooler mounting bracket on the driver's side. Position as shown below and tighten with the other 8mm x 1.25 x 20mm bolt and 8mm lock washer provide with your kit.
 - The driver's side power steering cooler mounting bracket measures 2 7/8" x 3"
 - Take note of the orientation of the brackets and location of the intercooler core in relation to the OEM crash bar. The core should be mounted as high and as close to the crash bar as possible. Touching the crash bar when tightening is best; it will drop a bit.



17. Using a 10mm socket and wrench, attach the short leg of the passenger side power steering cooler bracket to the power steering cooler using the bolt removed in step 13, a 6mm nut and flat washer included with your kit. Tighten it as far to the left in the slotted hole as possible.
- The passenger side power steering mounting bracket measures 2 3/4" x 3 1/2.
 - If necessary, tweak the power steering lines so they do not come in contact with the bracket



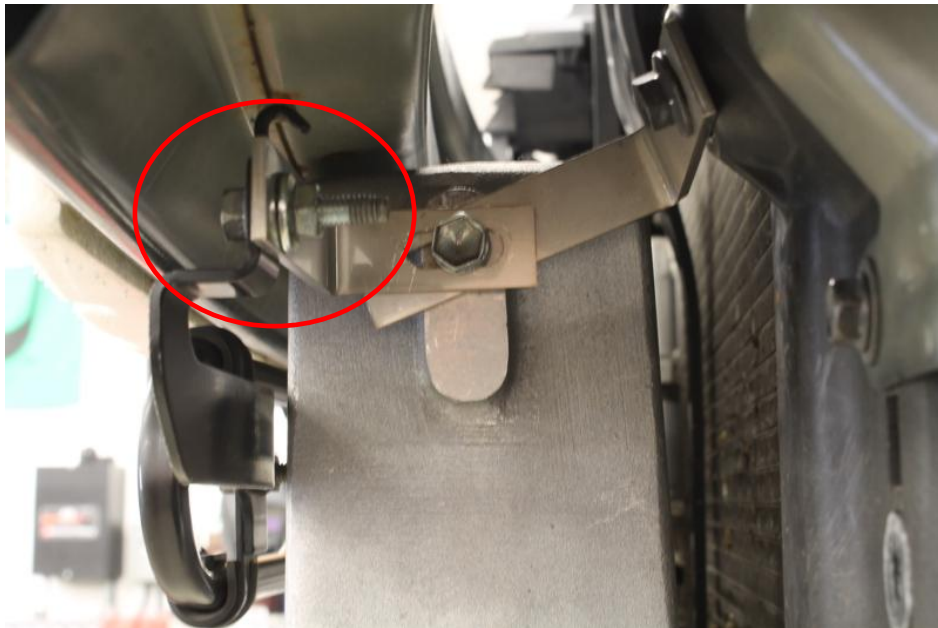
18. Wrap some cardboard around the fins of the power steering cooler to protect against damage to the fins of the intercooler for the next few steps.



19. Next, wrestle the power steer cooler around to the front of the intercooler and attach the passenger side mounting bracket first, using one of the bolts removed in step 12. Tighten with a 10mm socket.



20. Now, attach the driver's side of the power steering cooler to the mounting bracket installed in step 16. Use a bolt removed in step 12, along with 6mm nut and flat washer included with your kit.



21. Make any necessary adjustments to the intercooler and power steering cooler brackets to ensure there is no contact between the power steering cooler fins and the intercooler.

SHIPPING

All orders are carefully inspected and packaged prior to shipment. The recipient must inspect all shipments for damage and report any damage to the carrier and JAMES BARONE RACING immediately. JAMES BARONE RACING is not responsible for damage that occurs during shipping.

RETURNS:

All sales are final. JAMES BARONE RACING will only except returns in the event of a manufacturer's defect. Defective items will be exchanged for the identical item or repaired at our discretion. Return shipping costs are the responsibility of the purchaser. An RMA # (Return to Manufacturer Authorization Number) must accompany all returns. In rare cases when a return is accepted, a 20% restocking fee will be deducted from the refund or credit. Shipping charges are non- refundable. No returns or exchanges will be accepted after 30 days.

DISCLAIMERS:

Failure to carefully follow the installation instructions for your JAMES BARONE RACING product could result in significant property damage, personal injury, injury to others or even death. Please take the time to read and thoroughly understand the instructions prior to installation. The instructions are as accurate as possible and may vary slightly from model year to model year. Professional installation is recommended.

Neither JAMES BARONE RACING nor any of its employees, officers, directors, or shareholders will accept responsibility for improper use or installation of our products. JAMES BARONE RACING is not responsible for the misuse, incorrect installation, or failure of any product we sell. Under no circumstances, including but not limited to negligence, will JAMES BARONE RACING be liable for special or consequential damages that result from the use or inability to use our products. JAMES BARONE RACING does not assume responsibility for any damage to the user, driver, passenger or vehicle resulting from the operation of a JAMES BARONE RACING product. PLEASE DRIVE RESPONSIBLY.

WARRANTY:

All JAMES BARONE RACING products carry a lifetime warranty to the original purchaser. Warranty is non-transferable. Supporting components, manufactured by companies other than James Barone Racing, carry the manufacturer's warranty. Warranty does not cover damage to coatings caused by exposure to the elements. Warranty does not cover damage or failure caused by abuse, misuse, faulty installation or repairs not conducted by JAMES BARONE RACING. JAMES BARONE RACING is not liable for consequential damages arising from the use of our products or any indirect damages resulting in the loss of property, revenue or costs for towing, removal, installation, or re-installation. To receive warranty service you must contact JAMES BARONE RACING to receive an RMA # (Return to Manufacturer Authorization Number) at which time you will be provided with instructions for returning the faulty product

CONTACT:

If you have questions or problems, e-mail us at jamesbaroneracing@gmail.com. Posting questions or problems in the forums or other social media outlets will only delay you from getting the correct answer or personalized attention from us.