



## 2016 & Up Mazda Miata Rear Differential Mount Installation Instructions

### Tooling:

- ✓ Jack and jack stands or a lift
- ✓ Socket wrench and torque wrench
- ✓ 6" socket extension
- ✓ 17mm socket
- ✓ 17mm wrench

### Included:

- ✓ One (1) Differential Mount

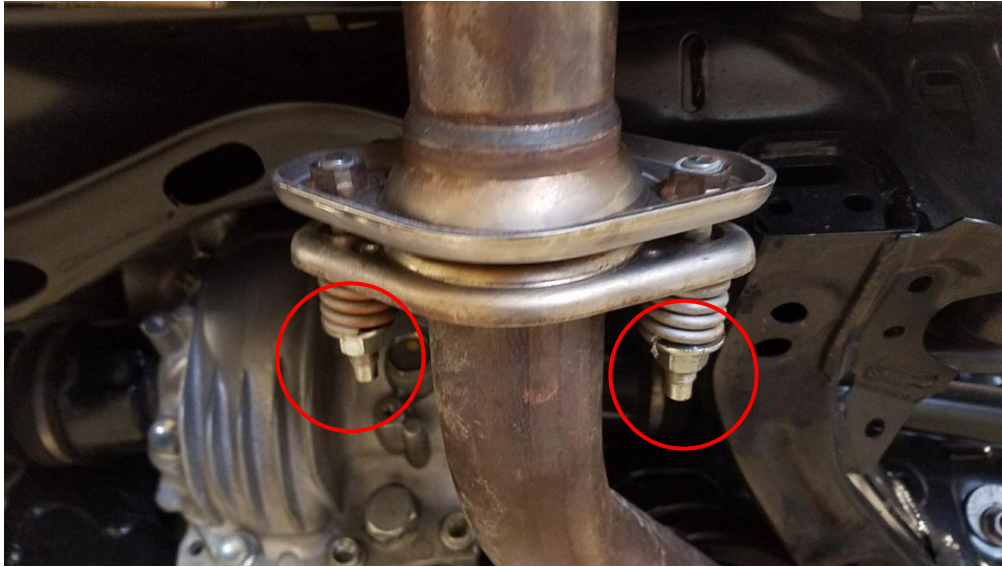
\*\*Please be sure to read and understand the instructions thoroughly before beginning.

Begin by parking on a smooth, level surface with the emergency brake engaged. Jack up the rear of the vehicle and position jack stands underneath both sides.

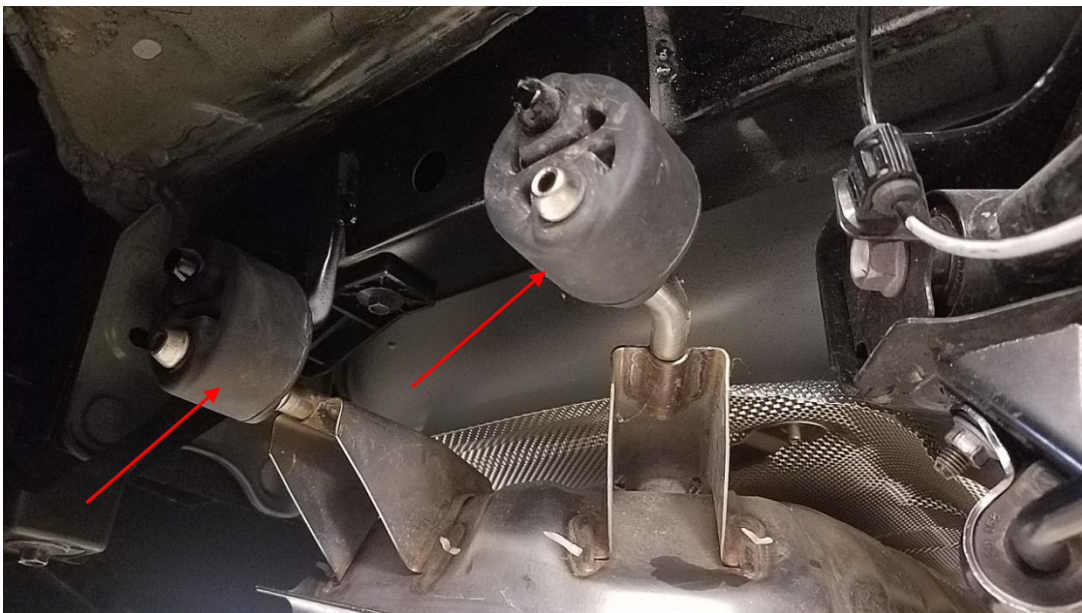


Refer to your vehicle owner's manual for proper jack placement and supporting procedures. **Never get under a vehicle without the proper support in place.**

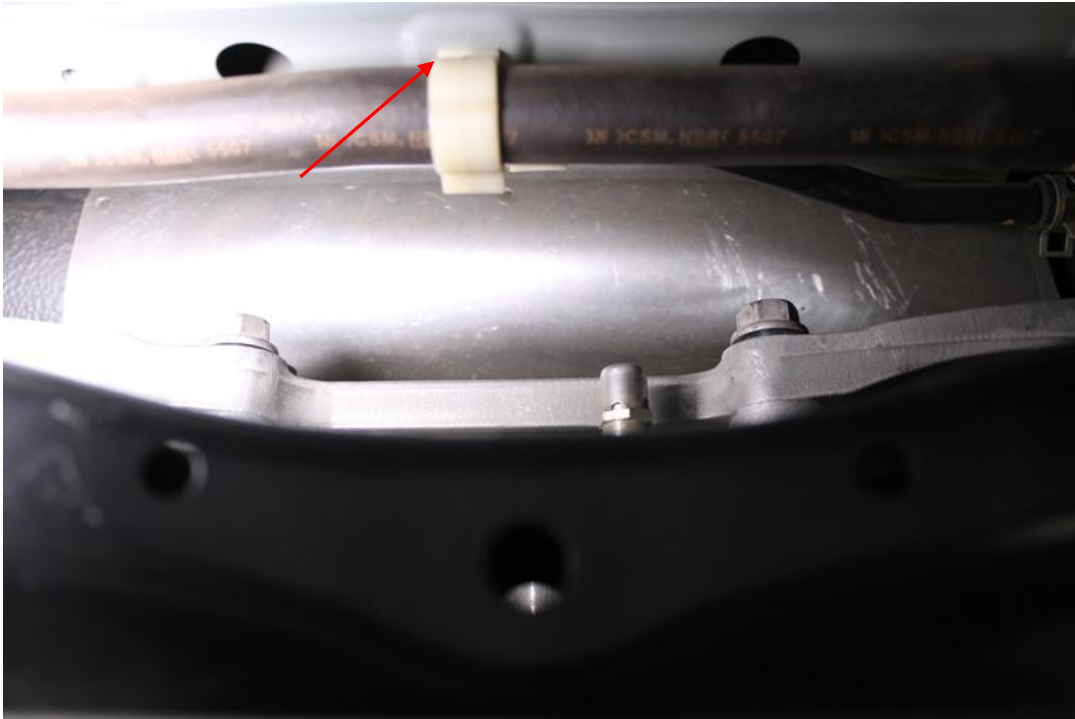
1. Using a 17mm socket, remove the two nuts securing the muffler section of the exhaust.



2. Remove the two rubber hangers on either side of the muffler and remove the muffler from the car.



3. Above the differential, unclip the connector holding the rubber vent hose to the body of the vehicle allowing the hose to move freely.



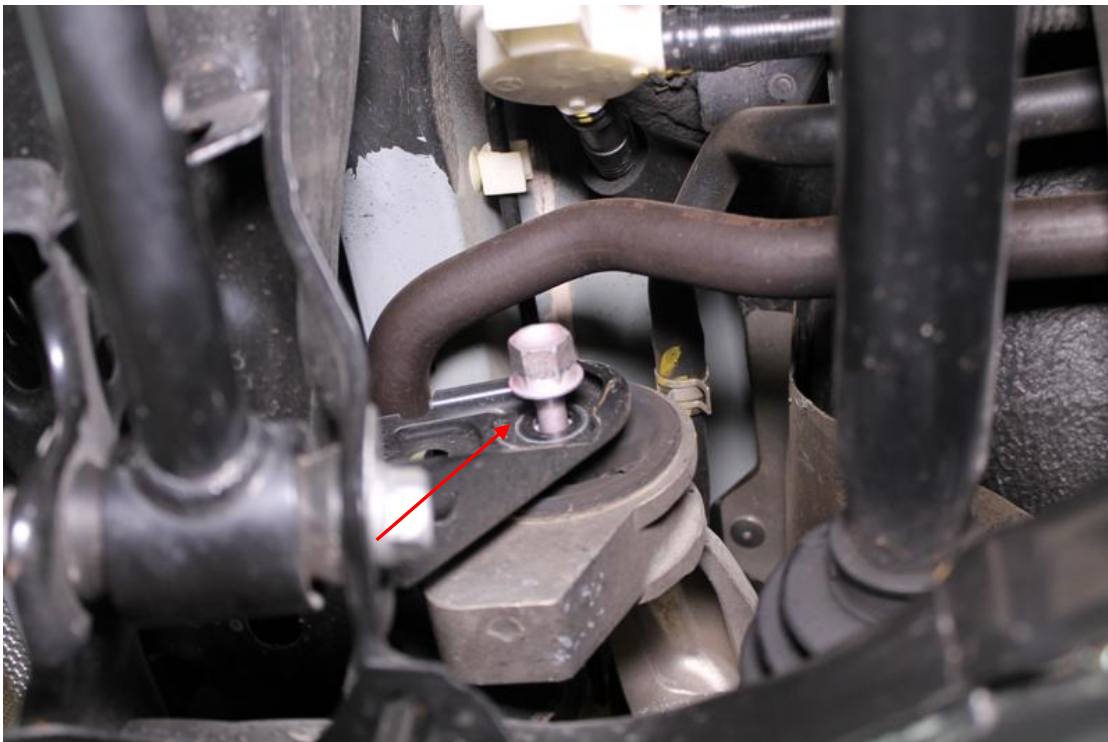
4. Remove the larger hard-line from the bracket securing it to the body of the vehicle.



5. Place a jack beneath the rear differential and raise it enough to take the weight off.

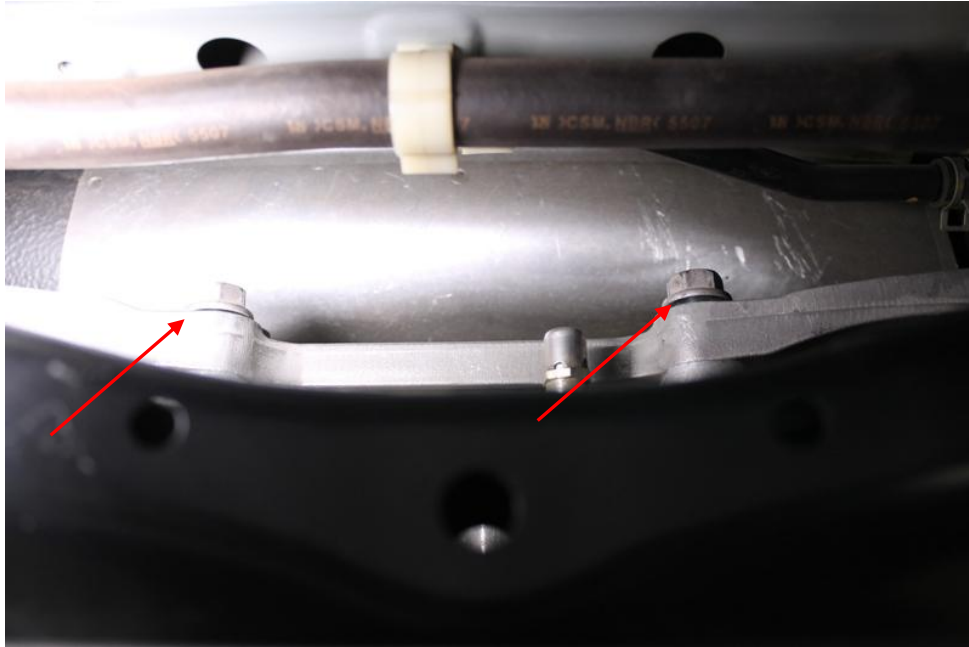


6. Using a 17mm socket and 6" extension, remove the two bolts securing both sides of the OEM differential mount to the sub-frame.



Copyright © 2017 James Barone Racing LLC. Any unauthorized reproduction or publication of this document is strictly prohibited without the written consent of James Barone Racing.

- Using a 17mm wrench, remove the four nuts securing the center section of the OEM differential mount to the differential.
  - There are two nuts at the rear and two at the front not shown.

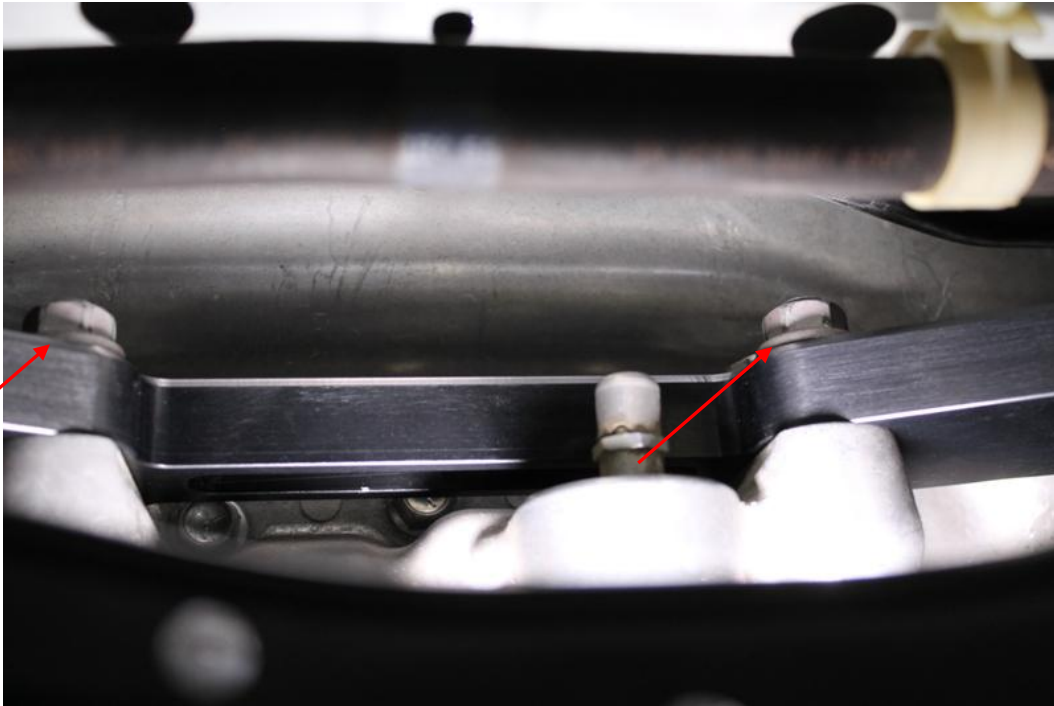


- Carefully lower the jack and allow the differential to rest on the sub-frame. Then, remove the OEM differential mount out towards the driver's side of the vehicle. Start by pivoting the ears of the mount towards the front of the vehicle to clear the passenger side sub-frame mounting point.
  - The next few shots help to illustrate how to remove it.

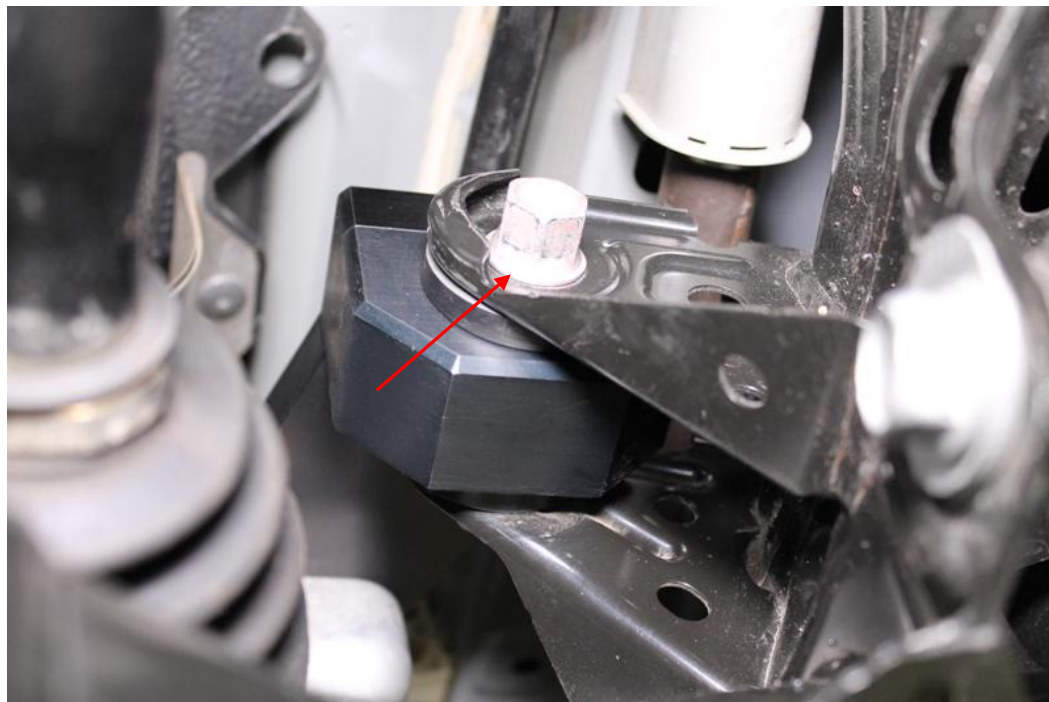




9. Install your new JBR rear differential mount. Position the ears in the mounting points of the sub-frame then raise the differential so the studs in the differential slip through the mount. Replace the top four nuts removed in step 8 and tighten to 45 ft/lbs.



10. Install the two bolts removed in step 7 and tighten to 45 ft/lbs. and reconnect the bracket.



11. Reconnect the clip securing the hose removed in step 4 and secure the hard-line in its bracket removed in step 5.

**Congratulations!! This completes the installation of your new  
JBR Rear Differential Mount!!**