



JAMES BARONE RACING AFTERMARKET PARTS AND ACCESSORIES

JB ARMOR Mud Flap Installation instructions MAZDASPEED 6 2006 - 2007

What you will need:

- Jack and Jack Stands
- Drill and ¼" drill bit
- Pliers
- Philips head screw driver
- 7/16" wrench

- ❖ **Begin by parking on a smooth level surface with the emergency brake engaged. Jack up the front of the vehicle, position jack stands underneath both sides and remove both front wheels.**



Refer to your vehicle's owner's manual for proper jack placement and supporting procedures.

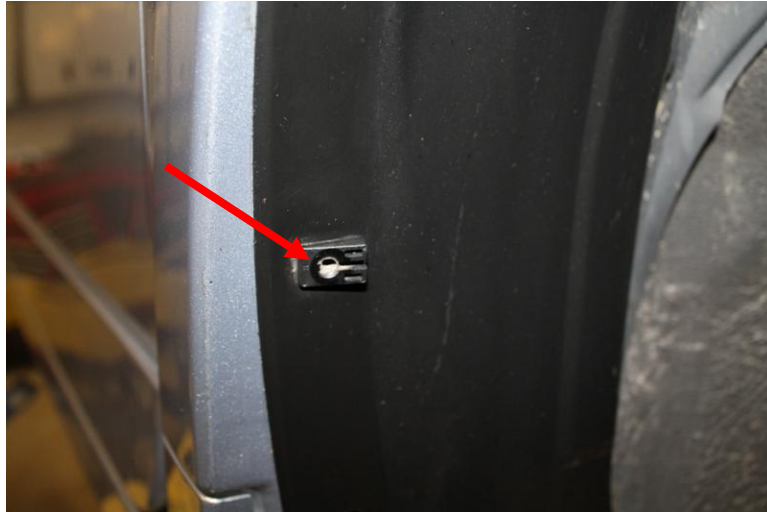
Never get under a vehicle without the proper support in place.

FRONT (Both sides are the same)

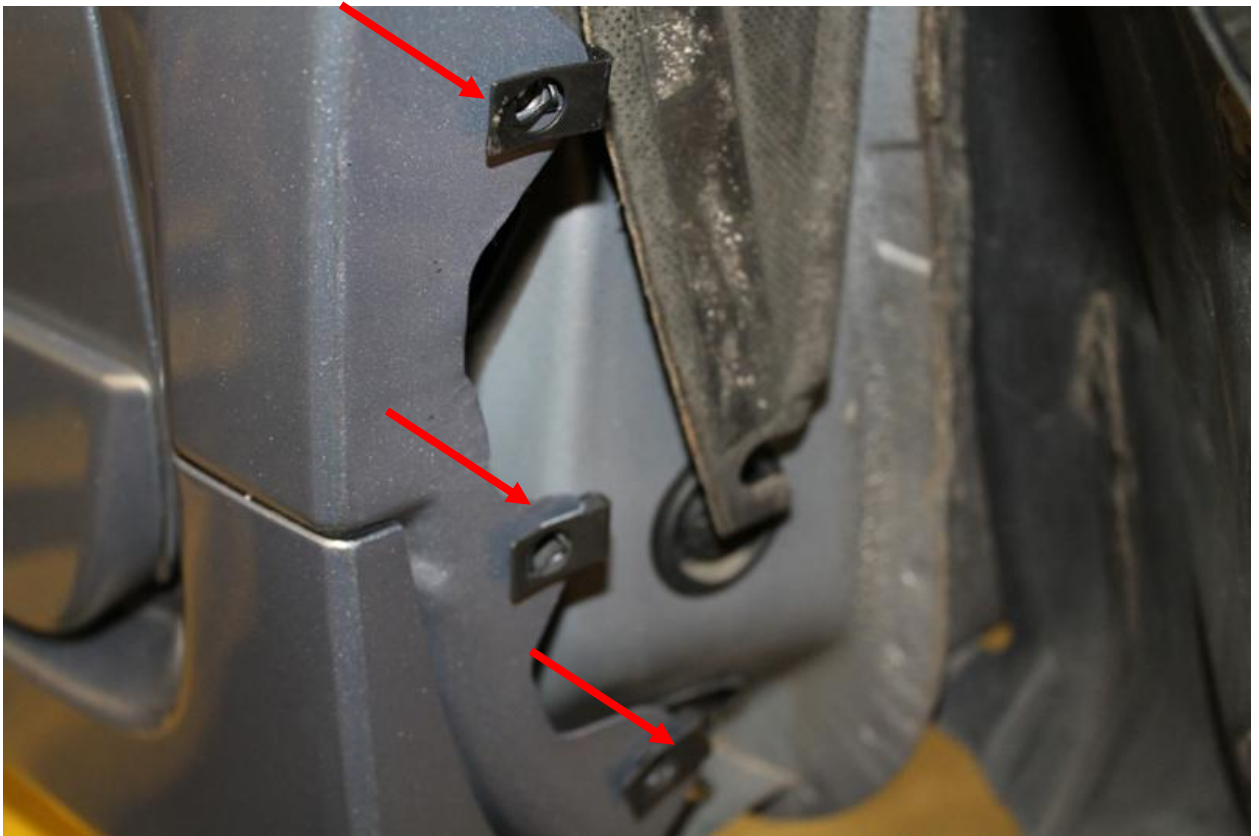
1. Remove all the circled fasteners using a philips head screw driver and remove the outer fender liner cover.



2. With a pair of pliers remove the square portion of the fastener shown below.



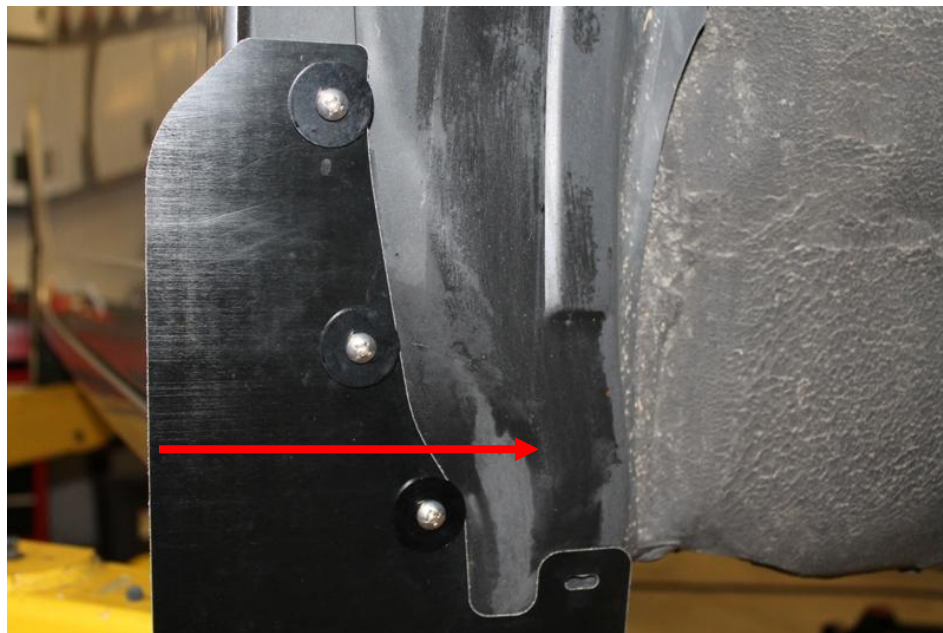
3. Place three metal edge clips over the holes in the fender as shown below.



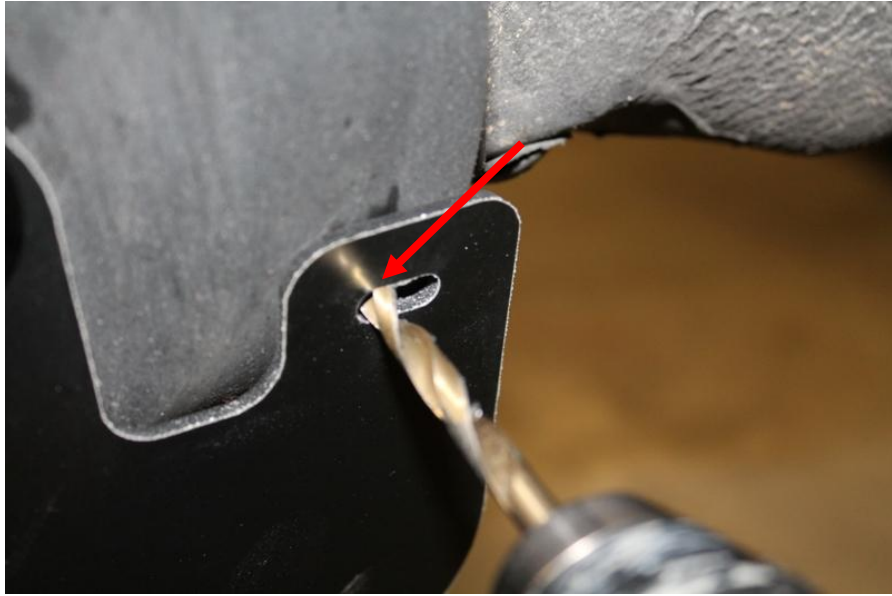
4. Reinstall the out fender liner cover and the two fasteners circled below.



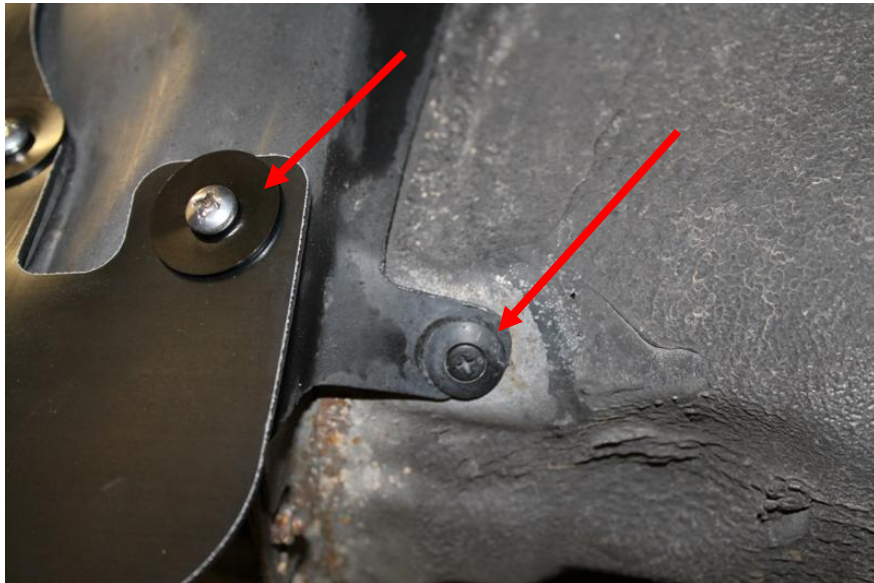
5. Using 3 black nylon washers and 3 Philips head bolts loosely install the mud flap. Push the mud flap as far in as it will go.



- Next, with the mud flap pushed all the way in & level, drill a hole through the fender liner in the location shown below.



- Remove the faster shown below then, using one black nylon washer, a philips head bolt, a flat washer, a lock washer and a nut, loosely secure the last hole in the mud flap.



8. Level and adjust the flap in or out as desired and tighten the bolts with a philips head screw driver and a 7/16" wrench. Reinstall the OEM fastener removed in step 7.



REAR (Both sides are the same)

- ❖ Begin by parking on a smooth level surface with the emergency brake engaged. Jack up the rear of the vehicle, position jack stands underneath both sides and remove both rear wheels.



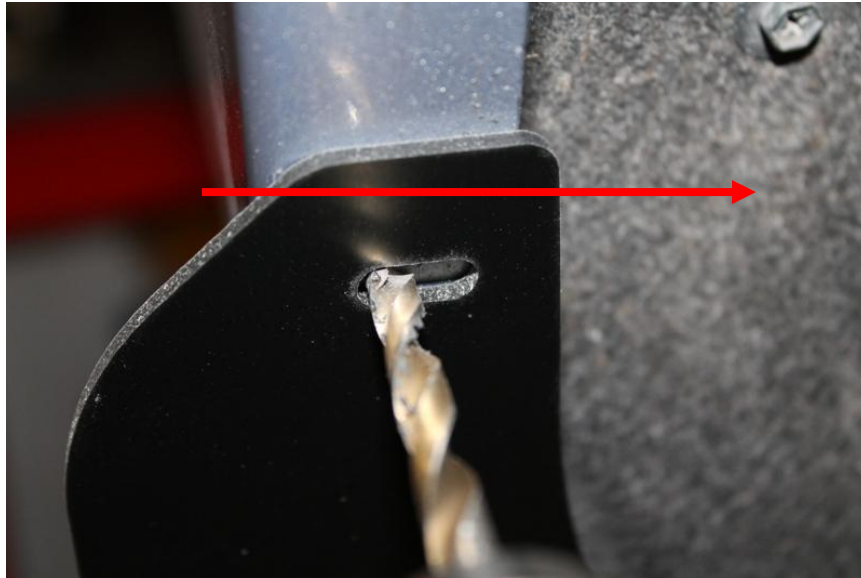
Refer to your vehicle's owner's manual for proper jack placement and supporting procedures.

Never get under a vehicle without the proper support in place.

1. Using a drill and a 1/4" drill bit; remove the heads of the two rivets securing the outer fender liner cover. Be sure to remove the back portion of the rivets once the head has been drilled off. Once the rivets are completely removed drill completely through with the 1/4" drill bit.



9. Using two black nylon washers, two philips head bolts, two flat washers, two lock washers and two nuts, loosely install the mud flap through the holes where the rivets used to be. The washers and nuts can be put on the bolts from behind the lip of the bumper cover.
10. Push the mud flap as far in as it will go. Then, making sure the mud flap is level, use the ¼" drill bit to drill a hole in the location shown below.



11. Loosely secure the upper hole in the mud flap with one black nylon washer, one philips head bolt, one flat washer, one lock washer and one nut make secure the last hole in the mud flap.



12. Using the ¼" drill bit, drill a hole in the inner fender liner as shown below.



13. Loosely secure the final hole in the mud flap with one black nylon washer, a philips head bolt, flat washer, lock washer and nut make secure the last hole in the mud flap.

14. Level and adjust the flap in or out as desired and tighten the bolts with a philips head screw driver and a 7/16" wrench.



**Congratulations!! You've now completed the installation of
your new JB ARMOR MAZDASPEED 6 Mud Flaps**

SHIPPING

All orders are carefully inspected and packaged prior to shipment. The recipient must inspect all shipments for damage and report any damage to the carrier and JAMES BARONE RACING immediately. JAMES BARONE RACING is not responsible for damage that occurs during shipping.

RETURNS:

All sales are final. JAMES BARONE RACING will only accept returns in the event of a manufacturer's defect. Defective items will be exchanged for the identical item or repaired at our discretion. Return shipping costs are the responsibility of the purchaser. An RMA # (Return to Manufacturer Authorization Number) must accompany all returns. In rare cases when a return is accepted, a 15% restocking fee will be deducted from the refund or credit. Shipping charges are non-refundable. No returns or exchanges will be accepted after 30 days.

DISCLAIMERS:

Failure to carefully follow the installation instructions for your JAMES BARONE RACING product could result in significant property damage, personal injury, injury to others or even death. Please take the time to read and thoroughly understand the instructions prior to installation. The instructions are as accurate as possible and may vary slightly from model year to model year. Professional installation is recommended.

Neither JAMES BARONE RACING nor any of its employees, officers, directors, or shareholders will accept responsibility for improper use or installation of our products. JAMES BARONE RACING is not responsible for the misuse, incorrect installation, or failure of any product we sell. Under no circumstances, including but not limited to negligence, will JAMES BARONE RACING be liable for special or consequential damages that result from the use or inability to use our products. JAMES BARONE RACING does not assume responsibility for any damage to the user, driver, passenger or vehicle resulting from the operation of a JAMES BARONE RACING product. PLEASE DRIVE RESPONSIBLY.

WARRANTY:

All JAMES BARONE RACING products carry a lifetime warranty to the original purchaser. Warranty is non-transferable. Warranty does not cover damage or failure caused by abuse, misuse, faulty installation or repairs not conducted by JAMES BARONE RACING. JAMES BARONE RACING is not liable for consequential damages arising from the use of our products or any indirect damages resulting in the loss of property, revenue or costs for towing, removal, installation, or re-installation. To receive warranty service you must contact JAMES BARONE RACING to receive an RMA # (Return to Manufacturer Authorization Number) at which time you will be provided with instructions for returning the faulty product

CONTACT:

If you have questions or problems, e-mail us at jamesbaroneracing@gmail.com. Posting questions or problems in the forums or other social media outlets will only delay you from getting the correct answer or personalized attention from us.