



James Barone Racing Aftermarket Parts and Accessories

2013+ Focus *ST* Passenger Mount Installation Instructions

What you will need:

- Jack and jack stands. Jack stands are preferred
 - Ramps will work but, the job will be much more difficult because the suspension will rise not allowing for proper support of the engine when the mount is removed.
- Ratchet wrench
- 6" socket extension
- 19mm deep socket
- 15mm deep socket
- 19mm box wrench
- Torque wrench
- E10 torx socket
- T-30 torx bit

- ❖ **Begin by parking on a smooth level surface with the emergency brake engaged. Jack up the front of the vehicle and position jack stands underneath both sides.**

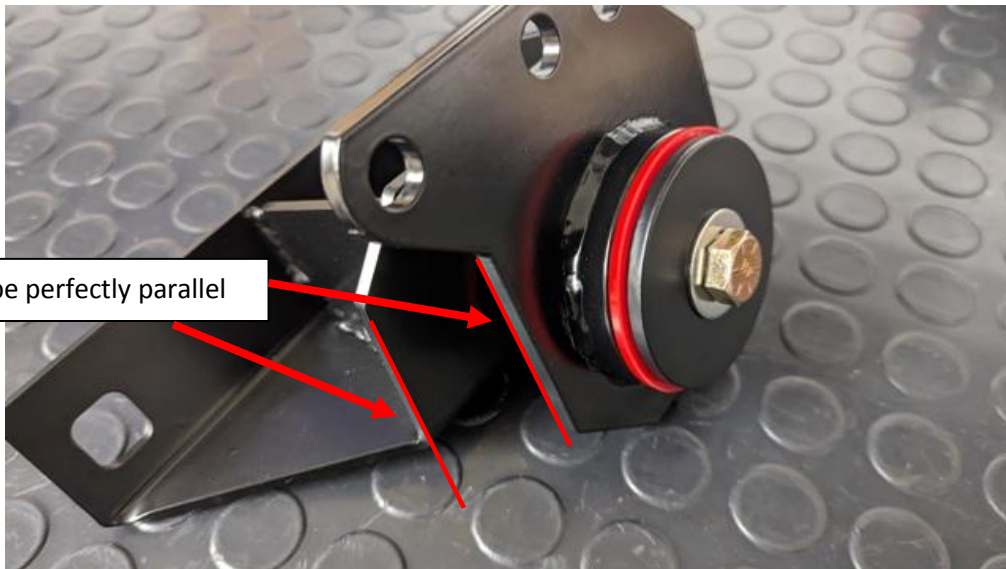
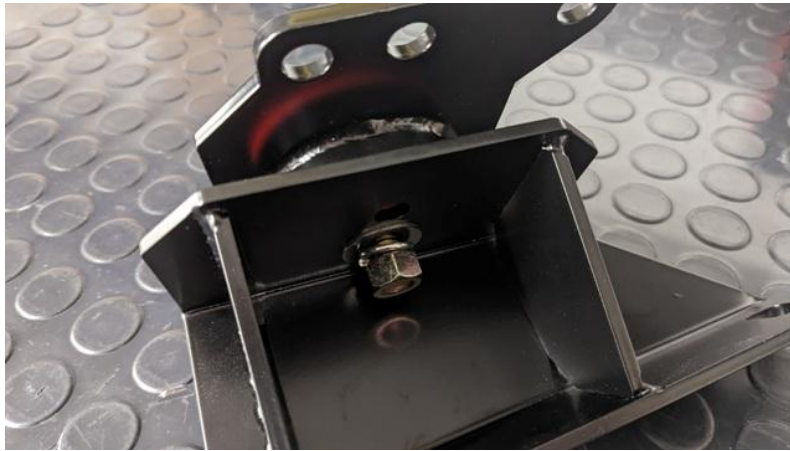
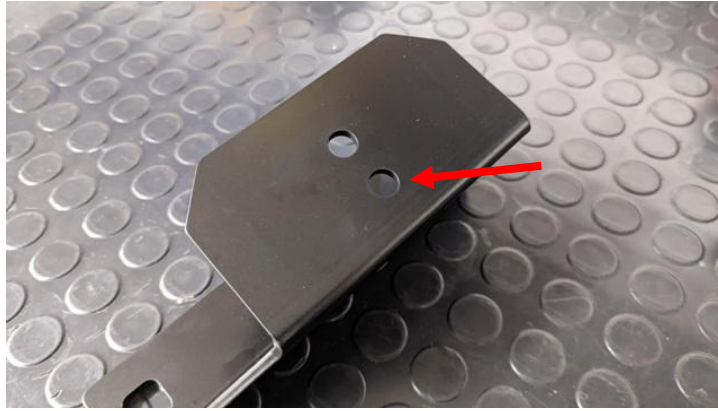


Refer to your vehicle's owner's manual for proper jack placement and supporting procedures.

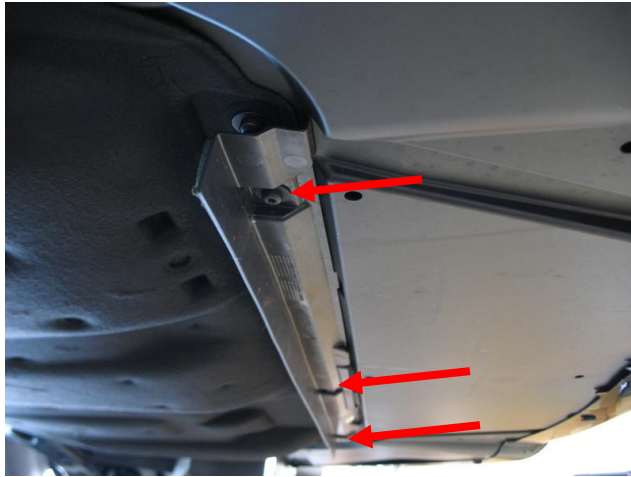
Never get under a vehicle without the proper support in place.

1. Using the hardware provided, a 19mm socket and wrench, assemble the mount exactly as shown in the following series of photos. Torque to 65ft/lbs





2. Remove the front portion of the belly pan using the T-30 torx bit.



3. Remove the remainder of the belly pan.



3. Remove the engine cover by pulling up in all four corners.



4. Remove the coolant reservoir by pulling it straight up, then rotating it and laying over on the the top of the engine being careful not to kink the lines attached to it





5. Using a jack support the motor. Raise the motor about a ½"



6. Remove the three 19mm nuts securing the top portion of the OEM motor mount to the engine.



7. Remove the two 15mm bolts securing the lower portion of the OEM motor mount to the frame. There is one in the front and one in the rear.



8. Remove the mount from the car. Using a E10 torx socket remove the three studs from the motor.



9. Install your new JBR Passenger mount in the vehicle. You may need to raise the motor a bit more. Some wiggling of the motor may be necessary to fit the mount. Place a lock washer then a flat washer on to each of the bolts included with the mount. Loosely install all three and then tighten all three 19mm bolts to 45ft/lbs.



10. Lower the jack allowing the mount to rest on the frame. Wiggle the motor in to position and reinstall the two 15mm bolts removed in step 7, torque to 45ft/lbs.
11. Replace the coolant reservoir, engine cover and belly pan.

****After a few hundred miles it's recommended to check and re-torque all mount bolts****

Congratulations!! You've now completed the installation of your new JBR Focus *ST* Passenger Side Motor Mount.

SHIPPING

All orders are carefully inspected and packaged prior to shipment. The recipient must inspect all shipments for damage and report any damage to the carrier and JAMES BARONE RACING immediately. JAMES BARONE RACING is not responsible for damage that occurs during shipping.

RETURNS:

All sales are final. JAMES BARONE RACING will only except returns in the event of a manufacturer's defect. Defective items will be exchanged for the identical item or repaired at our discretion. Return shipping costs are the responsibility of the purchaser. An RMA # (Return to Manufacturer Authorization Number) must accompany all returns. In rare cases when a return is accepted, a 15% restocking fee will be deducted from the refund or credit. Shipping charges are non- refundable. No returns or exchanges will be accepted after 30 days.

DISCLAIMERS:

Failure to carefully follow the installation instructions for your JAMES BARONE RACING product could result in significant property damage, personal injury, injury to others or even death. Please take the time to read and thoroughly understand the instructions prior to installation. The instructions are as accurate as possible and may vary slightly from model year to model year. Professional installation is recommended.

Neither JAMES BARONE RACING nor any of its employees, officers, directors, or shareholders will accept responsibility for improper use or installation of our products. JAME BARONE RACING is not responsible for the misuse, incorrect installation, or failure of any product we sell. Under no circumstances, including but not limited to negligence, will JAMES BARONE RACING be liable for special or consequential damages that result from the use or inability to use our products. JAMES BARONE RACING does not assume responsibility for any damage to the user, driver, passenger or vehicle resulting from the operation of a JAMES BARONE RACING product. PLEASE DRIVE RESPONSIBLY.

WARRANTY:

Copyright © 2014 James Barone Racing LLC. Any unauthorized reproduction or publication of this document is a strictly prohibited without the written consent of James Barone Racing.

All JAMES BARONE RACING products carry a lifetime warranty to the original purchaser. Warranty is non-transferable. Warranty does not cover damage or failure caused by abuse, misuse, faulty installation or repairs not conducted by JAMES BARONE RACING. JAMES BARONE RACING is not liable for consequential damages arising from the use of our products or any indirect damages resulting in the loss of property, revenue or costs for towing, removal, installation, or re-installation. To receive warranty service you must contact JAMES BARONE RACING to receive an RMA # (Return to Manufacturer Authorization Number) at which time you will be provided with instructions for returning the faulty product

CONTACT:

If you have questions or problems, e-mail us at jamesbaroneracing@gmail.com. Posting questions or problems in the forums or other social media outlets will only delay you from getting the correct answer or personalized attention from us.