

**James Barone Racing**  
**Custom Fabrication of Aftermarket Parts and Accessories**

**06'-07' MAZDASPEED 6**  
**JBR Passenger Side Motor Mount Installation Instructions**

**Tools Required:**

Jack & Jack Stands

Ratchet Wrench

Torque Wrench

10mm Socket

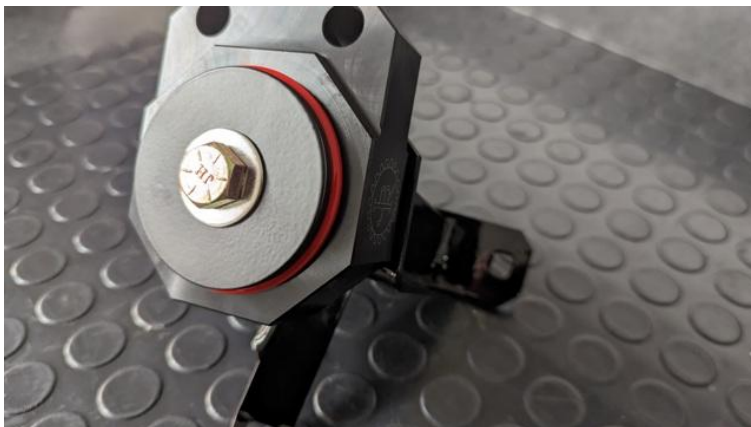
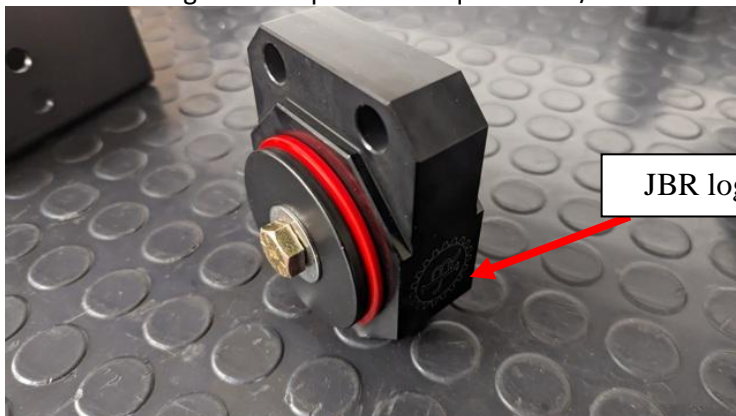
14mm Socket

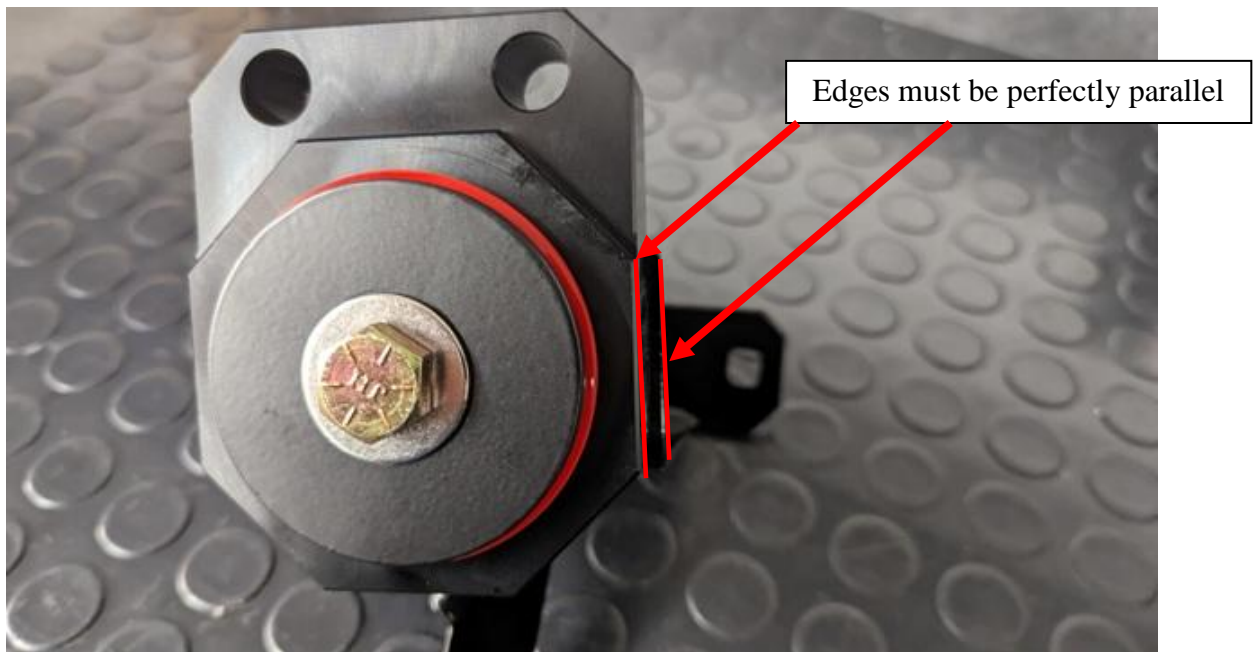
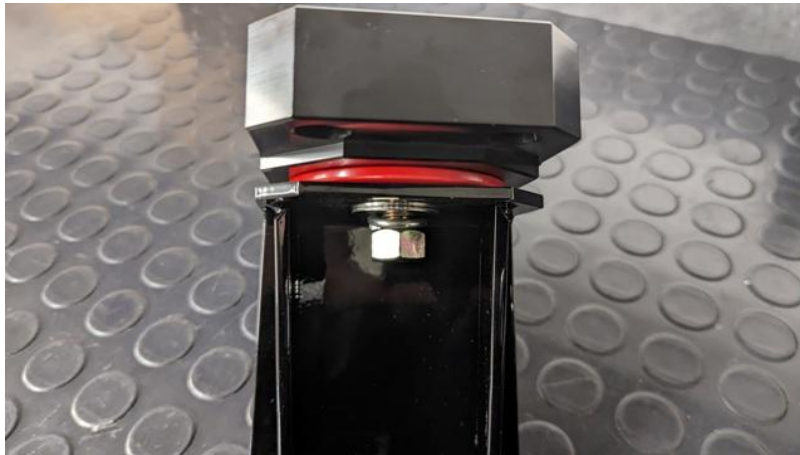
17mm Socket

19mm Socket

19mm Wrench

1. Using the hardware provided, a 19mm socket and wrench, assemble the mount exactly as shown in the following series of photos. Torque to 65ft/lbs





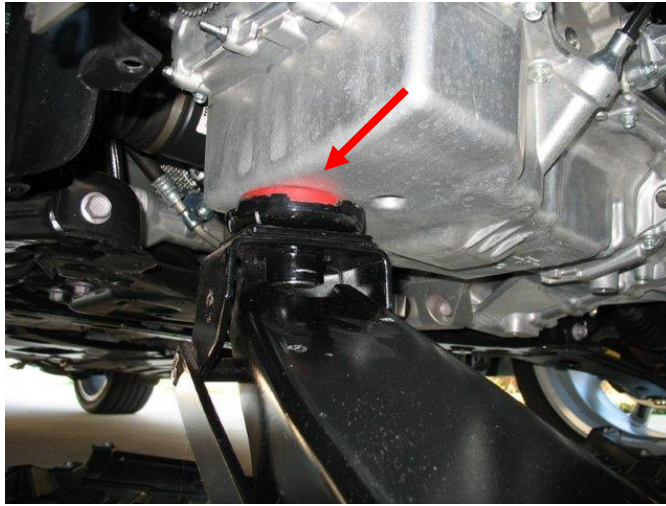
2. Begin by parking on a smooth level surface with the emergency brake engaged. Jack up the front of the vehicle and position jack stands underneath both sides.



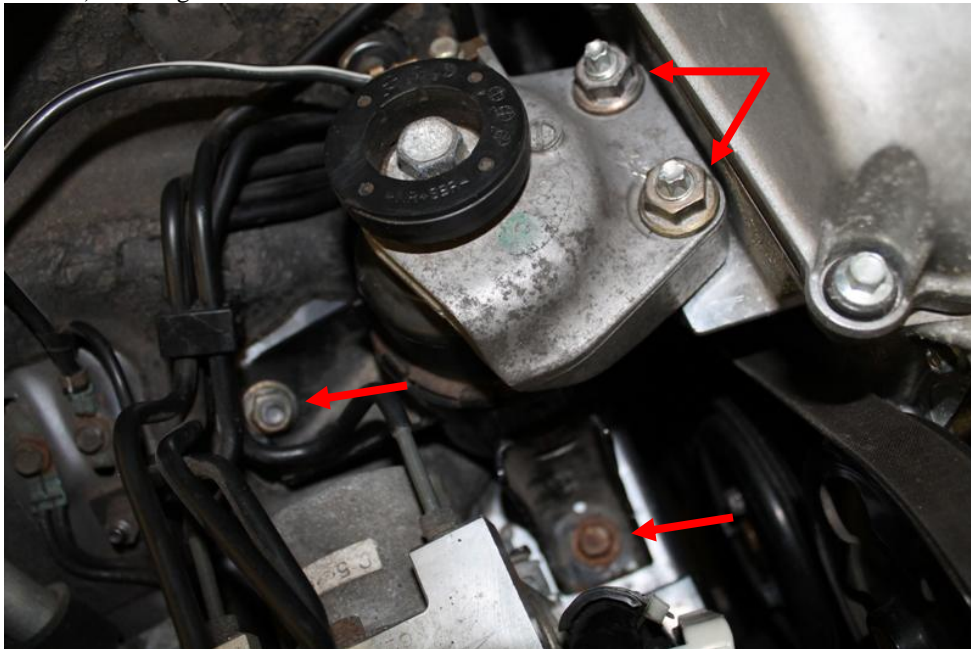
**Refer to you vehicles owner's manual for proper jack placement and supporting procedures. Never get under a vehicle without the proper support in place.**

3. Remove the belly pan and support the motor at the rear passenger side of the oil pan. Be sure to use a block of wood or jack pad.

**\*NOTE\*** Just take some weight off the motor; there is no need to raise it at this time.



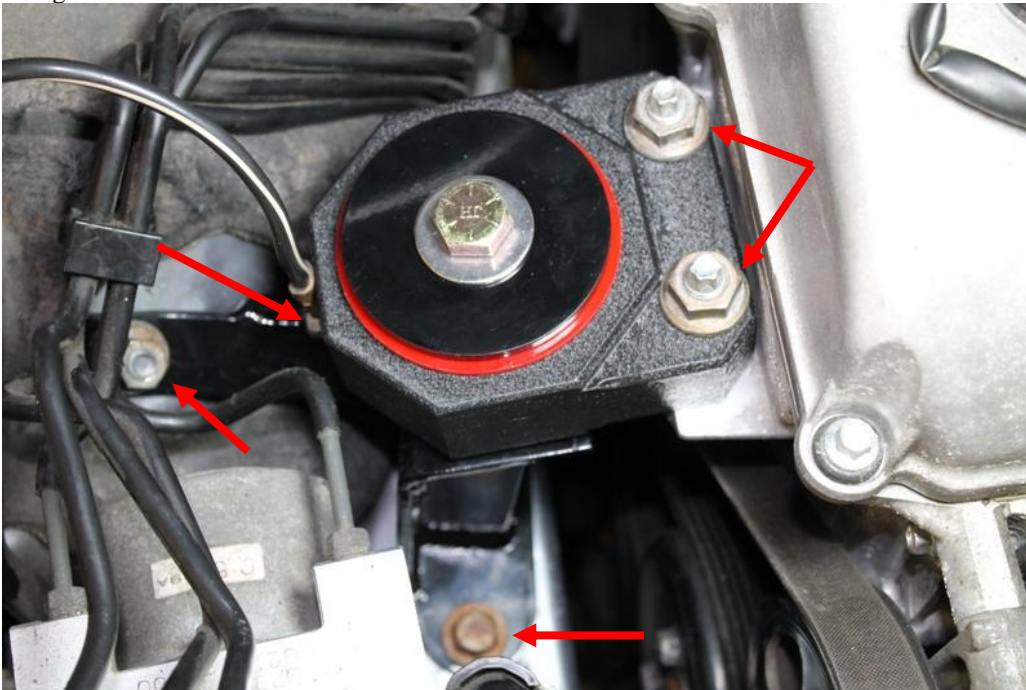
4. Now, remove the two 17mm nuts securing the top portion of the factory mount to the motor. Also remove the 14mm nut securing the rear portion of the mount to the inner fender and the front 14mm bolt securing the base of the mount to the frame. Next, remove the rear 14mm bolt (Not Shown) securing the mount to the frame.



5. Now remove the 10 mm bolt securing the ground strap to the top of the mount.



6. Remove the factory the mount from the vehicle. It may take raising the jack some to get it out.
7. Install your new JBR Passenger Motor Mount in to the vehicle. This can be a bit tough and it will require raising and lowering the motor as well as moving the motor. Take your time so you don't scratch up the mount.
8. Tighten the two nuts securing the mount to the motor to 50ft/lbs, the two bolts securing the base of the mount to the frame to 50ft/lbs and the nut securing the mount to the inner fender to 45ft/lbs.
9. Reattach the ground strap, removed in step 4, to the back of the top portion of the mount and tighten.



10. Remove the jack and lower the vehicle.

CONGRATULATIONS YOU'RE ALL DONE!!

**\*\*\*Warning\*\*\***

**After a few days of driving recheck and if necessary re-torque of all mounting bolts to ensure they have not come loose.**